

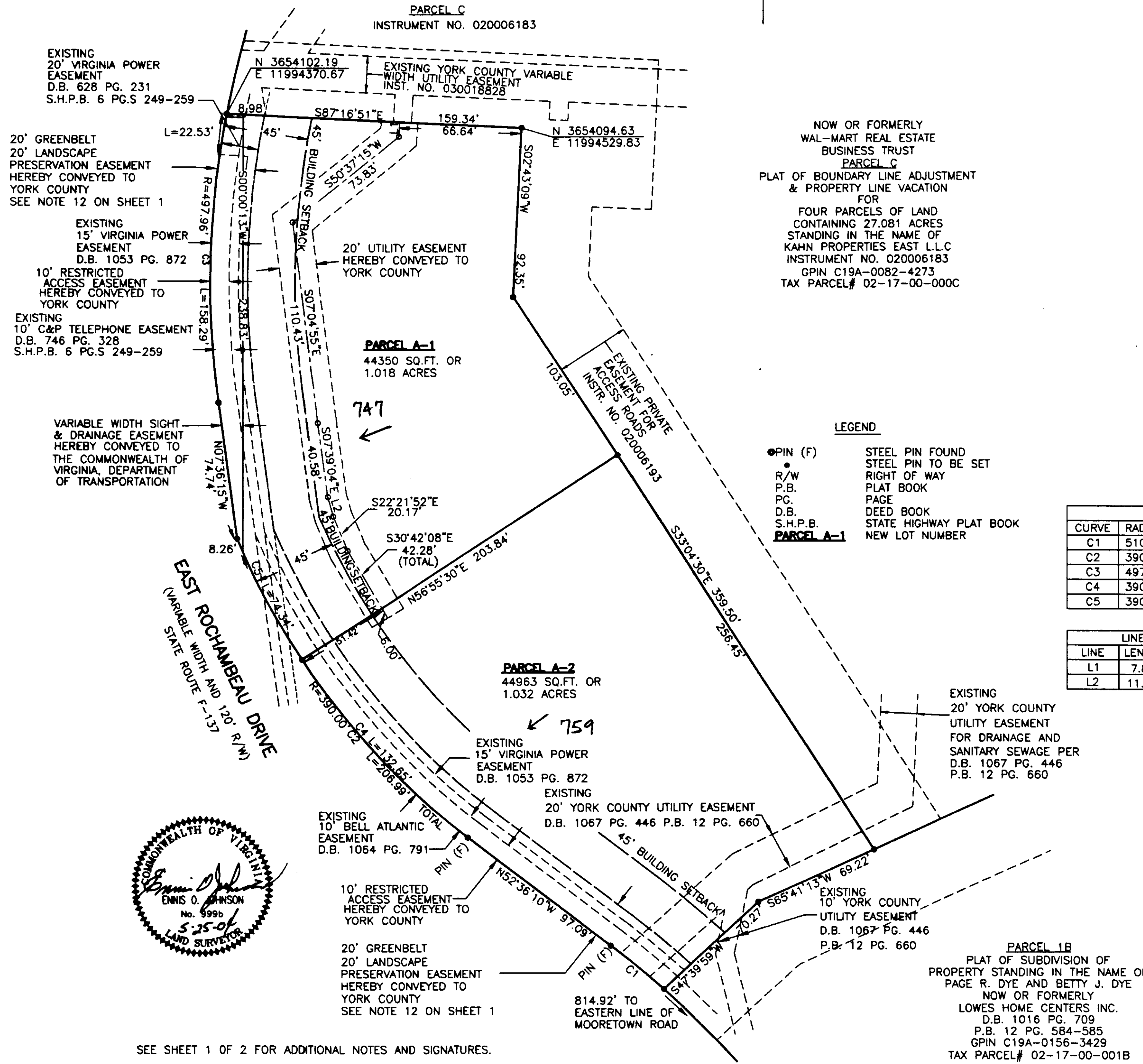
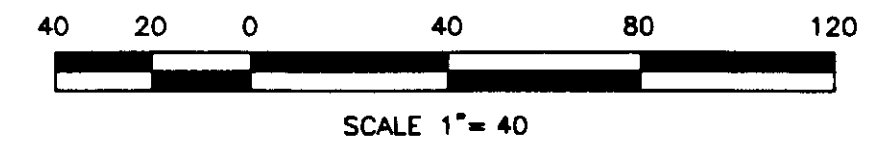
BURGESS & NIPLÉ

**SUBDIVISION
OF
OUTPARCEL A
PLAT OF BOUNDARY LINE ADJUSTMENT &
PROPERTY LINE VACATION FOR
FOUR PARCELS OF LAND CONTAINING 27.081 ACRES
STANDING IN THE NAME OF KAHN PROPERTIES EAST, LLC
(AS RECORDED AS INSTRUMENT NO. 020006183)
BRUTON MAGISTERIAL DISTRICT, YORK COUNTY, VIRGINIA**

SCALE: 1" = 40' DATE: MAY 25, 2004
34919 SHEET 2 OF 2



BURGESS & NIPLÉ
ENGINEERS • SURVEYORS • PLANNERS • LANDSCAPE ARCHITECTS
184 BUSINESS PARK DRIVE, SUITE 125, VIRGINIA BEACH, VA 23462-6533
PH. (757) 490-3566 FAX (757) 490-9224



LEGEND

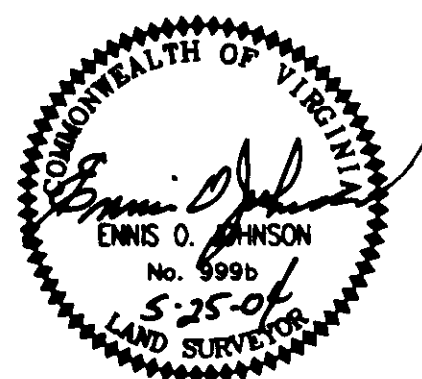
- PIN (F) STEEL PIN FOUND
- STEEL PIN TO BE SET
- R/W RIGHT OF WAY
- P.B. PLAT BOOK
- PG. PAGE
- D.B. DEED BOOK
- S.H.P.B. STATE HIGHWAY PLAT BOOK
- PARCEL A-1 NEW LOT NUMBER

CURVE TABLE

CURVE	RADIUS	LENGTH	DELTA	TANGENT	CHORD BEARING	CHORD
C1	510.00	37.34	4°11'42"	18.68	N50°30'20"W	37.33
C2	390.00	206.99	30°24'34"	106.00	N37°23'54"W	204.57
C3	497.96	158.29	18°12'44"	79.82	N01°30'07"E	157.62
C4	390.00	132.65	19°29'18"	66.97	N42°51'32"W	132.01
C5	390.00	74.34	10°55'16"	37.28	N27°39'15"W	74.23

LINE TABLE

LINE	LENGTH	BEARING
L1	7.84'	S02°43'09"W
L2	11.00'	S15°24'47"E



SEE SHEET 1 OF 2 FOR ADDITIONAL NOTES AND SIGNATURES.

APPROVED:
YORK COUNTY BOARD OF SUPERVISORS

BY: Al Maddalena
PLAT APPROVING AGENT

DATE: 3/9/05

STATE OF VIRGINIA
COUNTY OF YORK

IN THE CLERK'S OFFICE OF THE CIRCUIT COURT FOR THE
COUNTY OF YORK-POQUOSON THE 11th DAY OF March, 2005

THIS MAP WAS PRESENTED AND ADMITTED TO RECORD AS THE
LAW DIRECTS AS INSTRUMENT NO. 050004523 10:00am

TESTE: Lynn S. Jenkins
CLERK

BY: Christina E. Norman, D.C.

NOW OR FORMERLY
WAL-MART REAL ESTATE
BUSINESS TRUST
PARCEL C
PLAT OF BOUNDARY LINE ADJUSTMENT
& PROPERTY LINE VACATION
FOR
FOUR PARCELS OF LAND
CONTAINING 27.081 ACRES
STANDING IN THE NAME OF
KAHN PROPERTIES EAST L.L.C
INSTRUMENT NO. 020006183
GPIN C19A-0082-4273
TAX PARCEL# 02-17-00-000C

PARCEL A-1
44350 SQ.FT. OR
1.018 ACRES

PARCEL A-2
44963 SQ.FT. OR
1.032 ACRES

PARCEL 1B
PLAT OF SUBDIVISION OF
PROPERTY STANDING IN THE NAME OF
PAGE R. DYE AND BETTY J. DYE
NOW OR FORMERLY
LOWES HOME CENTERS INC.
D.B. 1016 PG. 709
P.B. 12 PG. 584-585
GPIN C19A-0156-3429
TAX PARCEL# 02-17-00-001B