

VICINITY MAP 1"=2000'

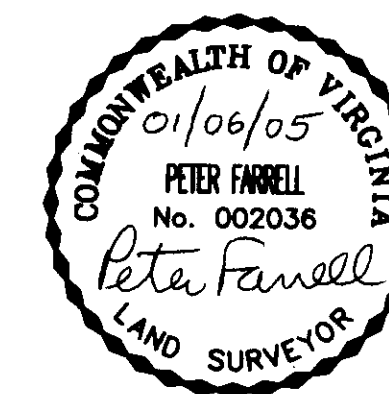
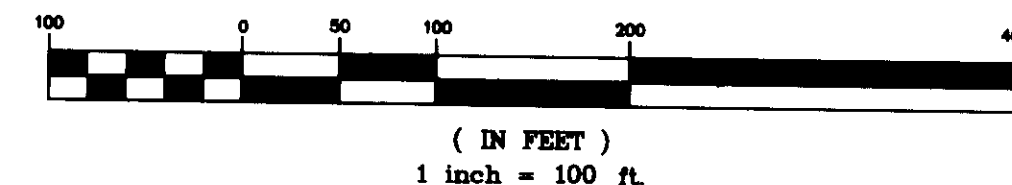
NOTES:

1. THE RECORDATION OF THIS PLAT SHALL OPERATE TO TRANSFER TO THE COUNTY OF YORK ANY EASEMENT INDICATED ON THE PLAT FOR DRAINAGE AND/OR WATERLINE TO CREATE A PUBLIC RIGHT-OF-PASSAGE OVER THE SAME UNLESS OTHERWISE NOTED ON THIS PLAT.
2. DRAINAGE AND UTILITY EASEMENTS CONVEYED TO THE COUNTY BY RECORDATION OF THIS PLAT SHALL BE EXCLUSIVE TO THE COUNTY, UNLESS OTHERWISE NOTED. CONVEYANCE OF SUCH EASEMENTS TO THE COUNTY ALSO INCLUDE: (I) THE COUNTY'S RIGHT OF INGRESS AND EGRESS OVER THE OWNER'S LAND ADJACENT TO THE EASEMENT AS NECESSARY TO INSPECT, MAINTAIN AND OPERATE THE COUNTY'S FACILITIES WITHIN THE EASEMENT AND (II) THE RIGHT OF THE COUNTY TO ASSIGN TO OTHERS, FROM TIME TO TIME, THE RIGHT TO LOCATE FACILITIES THEREIN SERVING THE PUBLIC, INCLUDING, BUT NOT LIMITED TO, WATER, ELECTRIC, TELEPHONE, COMMUNICATIONS, AND GAS UTILITY FACILITIES.
3. LOCATION OF 20' WATERLINE EASEMENT IS BASED ON AN ACTUAL FIELD LOCATION OF THE WATER LINE AND SURFACE FEATURES.
4. LOCATION OF THE 20' DRAINAGE EASEMENT IS BASED ON AN ACTUAL FIELD LOCATION OF THE EXISTING DITCH.

PLAT OF EASEMENT DEDICATION
FROM
GREAT WOLF LODGE OF
WILLIAMSBURG LLC
TO
THE COUNTY OF YORK, VIRGINIA
WALLER MILL DISTRICT
YORK COUNTY, VIRGINIA
DATE: 01/06/05

SHEET 1 OF 1

GRAPHIC SCALE



EAST ROCHAMBEAU DRIVE

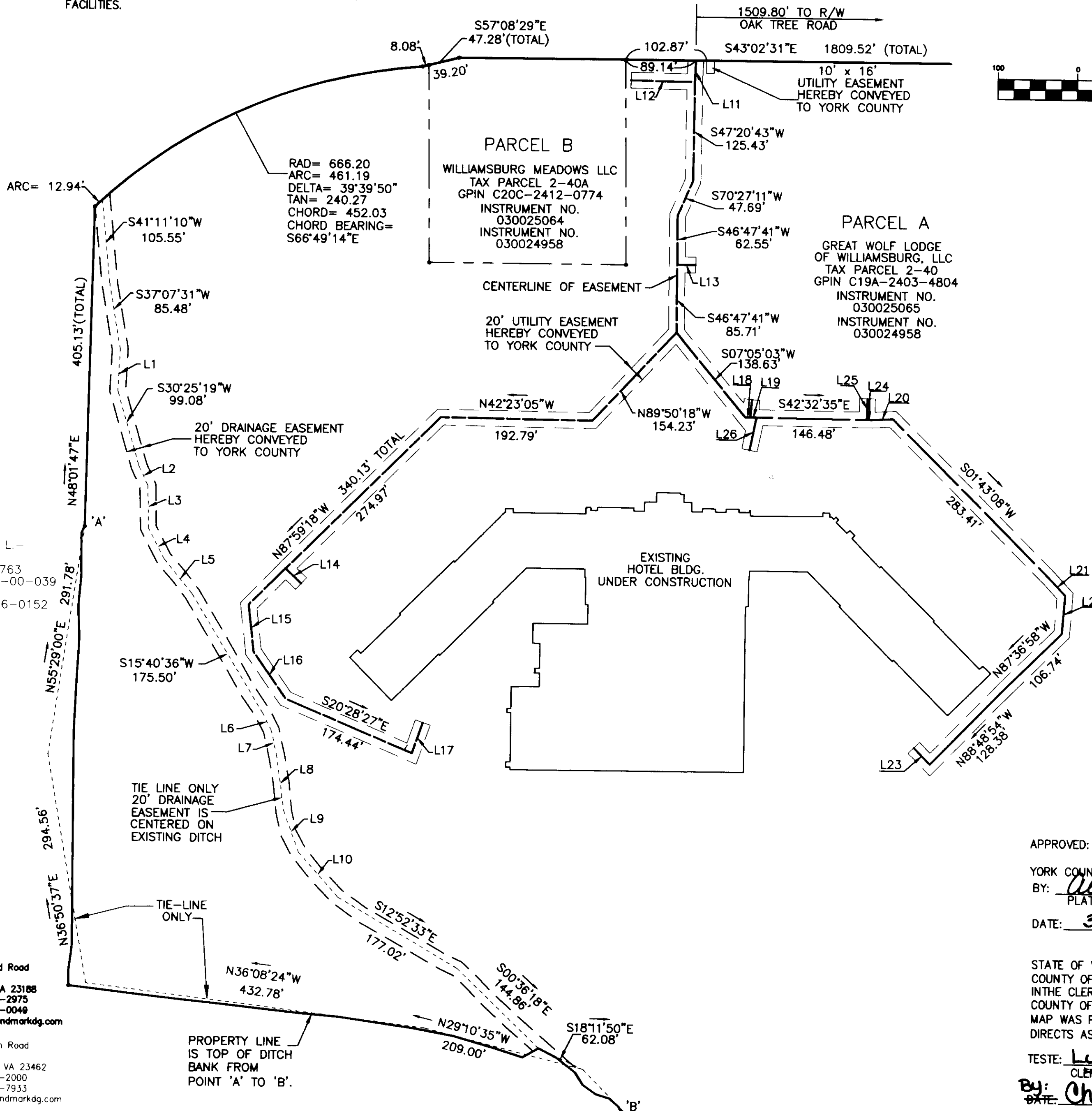
DRAINAGE EASEMENT

LINE	LENGTH	BEARING
L1	52.70'	S49°32'25"W
L2	27.23'	S21°58'47"W
L3	53.78'	S45°24'06"W
L4	43.02'	S19°17'33"W
L5	57.94'	S07°35'30"W
L6	23.66'	S19°21'35"W
L7	33.24'	S34°15'43"W
L8	71.42'	S38°53'09"W
L9	54.35'	S26°22'20"W
L10	75.69'	S05°05'05"W

UTILITY EASEMENT

LINE	LENGTH	BEARING
L11	26.88'	S49°01'45"W
L12	81.02'	N42°10'35"W
L13	23.65'	N43°12'19"W
L14	27.51'	S00°09'29"W
L15	60.04'	S40°23'41"W
L16	72.36'	S12°01'32"W
L17	41.35'	N66°09'57"E
L18	6.43'	S43°05'00"E
L19	8.07'	S43°05'00"E
L20	26.60'	S46°03'34"E
L21	29.31'	S03°49'09"W
L22	49.06'	S51°02'21"W
L23	29.02'	N02°26'17"E
L24	6.49'	S42°32'35"E
L25	26.89'	N48°28'35"E
L26	42.38'	N58°22'57"E

N/F
CLARICE MARIE L-SHERMAN
D.B. 219 PG. 763
TAX PARCEL: 02-00-00-039
ZONED: EO
GPIN #: C20C-1236-0152



4029 Ironbound Road
Suite 100
Williamsburg, VA 23188
Tel: (757) 253-2975
Fax: (757) 229-0049
Email: lmdg@landmarkdg.com

5544 Greenwich Road
Suite 200
Virginia Beach, VA 23462
Tel: (757) 473-2000
Fax: (757) 497-7933
Email: lmdg@landmarkdg.com

PROPERTY LINE
IS TOP OF DITCH
BANK FROM
POINT 'A' TO 'B'.

APPROVED:

YORK COUNTY BOARD OF SUPERVISORS,
BY: *Al Maddalena*
PLAT APPROVING AGENT

DATE: 3/11/05

STATE OF VIRGINIA
COUNTY OF YORK
IN THE CLERKS OFFICE OF THE CIRCUIT COURT FOR THE
COUNTY OF YORK THE 11th DAY OF Mar. 2005 THIS
MAP WAS PRESENTED AND ADMITTED TO RECORD AS THE LAW
DIRECTS AS INSTRUMENT NO. 030024958 10:28am

TESTE: Lynn S. Jenkins
CLERK
By: *Christina & Norman, D.C.*
DATE:

DRAWN BY: AST
CHKD. BY: PF

PROJ. NO.: 2002220-100.12
DWG. NO. 15507W

2005MAR 11 AM 10:28

2002220-100.12 WOLF LODGE EASEMENT PLATS \ EASMENT-PLAT.DWG