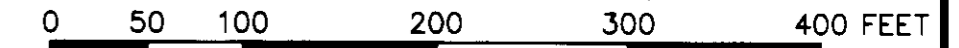


EXHIBIT "C"

PLAT OF
VILLAS ON SHADY BANKS
A CONDOMINIUM
PHASE I

(PROP. REF.: D.B. 54, P.107; D.B. 968, PGS.532-550)
(INSTR. #050004943; INSTR. #030021817)
SHEET 2 OF 6

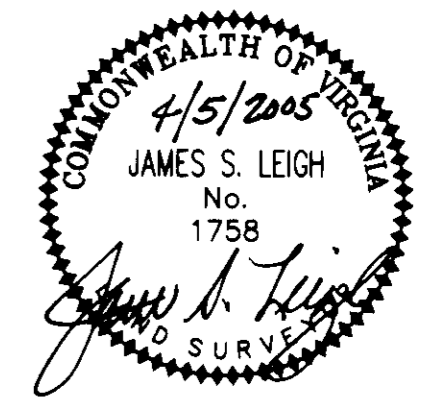
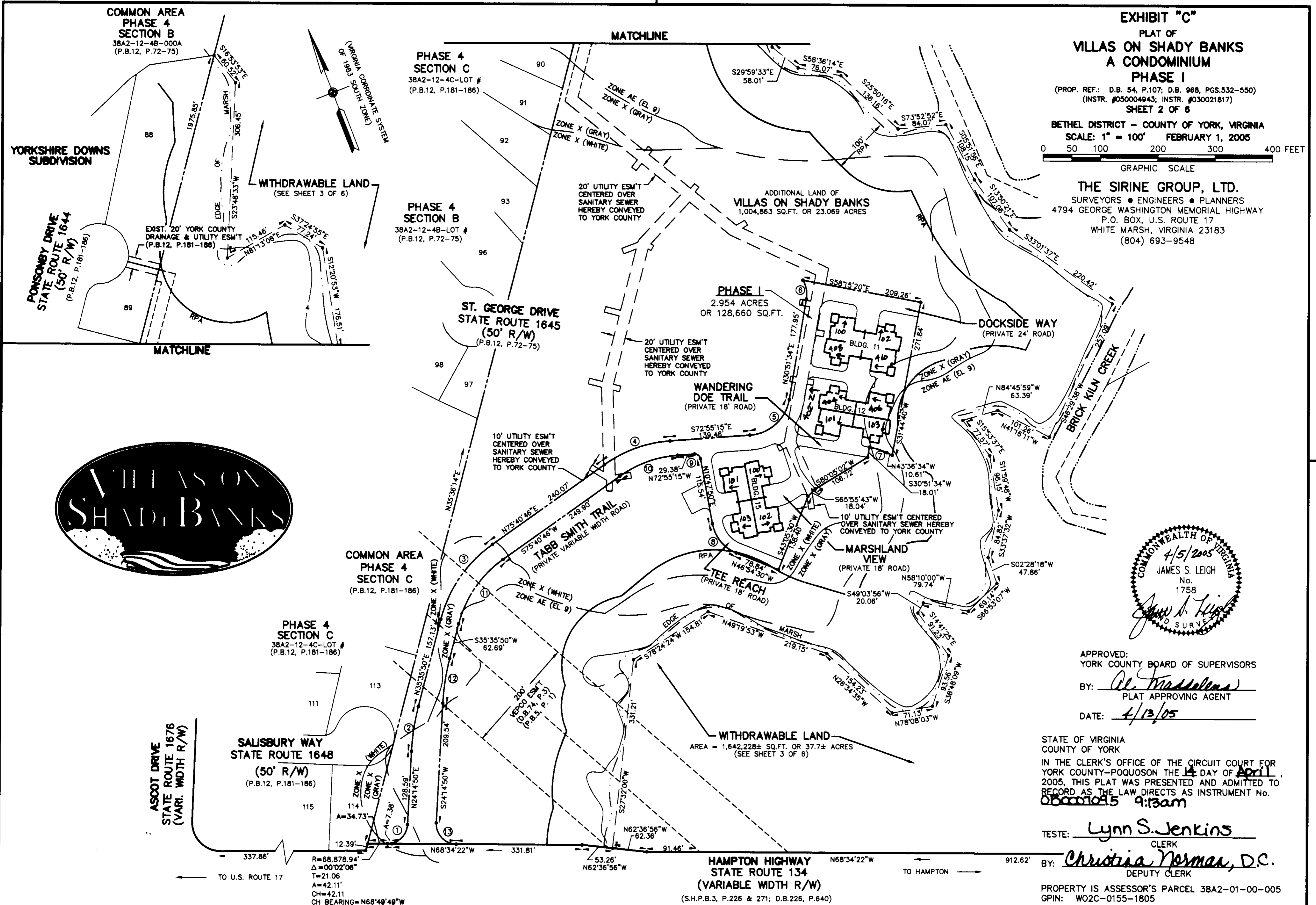
BETHEL DISTRICT - COUNTY OF YORK, VIRGINIA
SCALE: 1" = 100' FEBRUARY 1, 2005



GRAPHIC SCALE

THE SIRINE GROUP, LTD.

SURVEYORS • ENGINEERS • PLANNERS
4794 GEORGE WASHINGTON MEMORIAL HIGHWAY
P.O. BOX, U.S. ROUTE 17
WHITE MARSH, VIRGINIA 23183
(804) 693-9548



APPROVED:
YORK COUNTY BOARD OF SUPERVISORS
BY: *Al. Maddalena*
PLAT APPROVING AGENT
DATE: 4/13/05

STATE OF VIRGINIA
COUNTY OF YORK
IN THE CLERK'S OFFICE OF THE CIRCUIT COURT FOR
YORK COUNTY-POQUOSON THE 14 DAY OF April,
2005, THIS PLAT WAS PRESENTED AND ADMITTED TO
RECORD AS THE LAW DIRECTS AS INSTRUMENT NO.
060001095 9:13am

TESTE: Lynn S. Jenkins
CLERK
BY: Christina Norman, D.C.
DEPUTY CLERK

PROPERTY IS ASSESSOR'S PARCEL 38A2-01-00-005
GPIN: W02C-0155-1805