

THE UNDERSIGNED CERTIFIES THAT THIS PLAN IS ACCURATE AND COMPLIES WITH THE PROVISIONS OF THE CODE OF VIRGINIA SECTION 55-79.58 (b) AND ALL UNITS DEPICTED HEREON HAVE BEEN SUBSTANTIALLY COMPLETED.

SIGNED: C.L. Pittman DATE: 6/15/2005
C.L. PITTMAN, P.E.

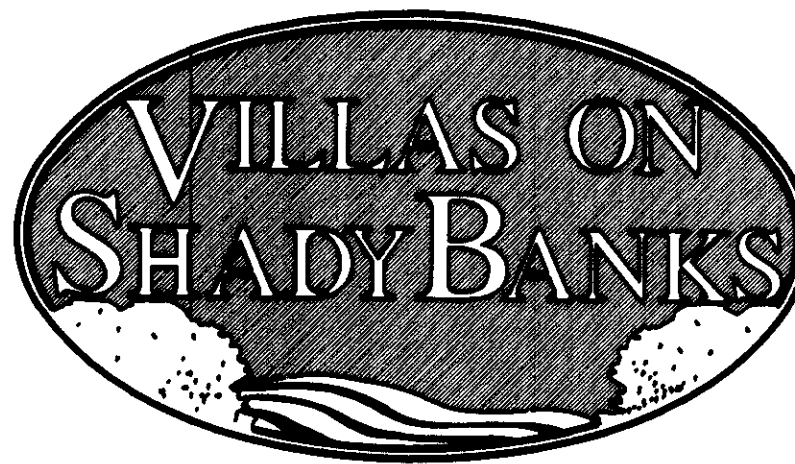
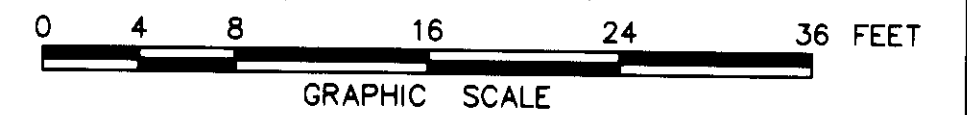
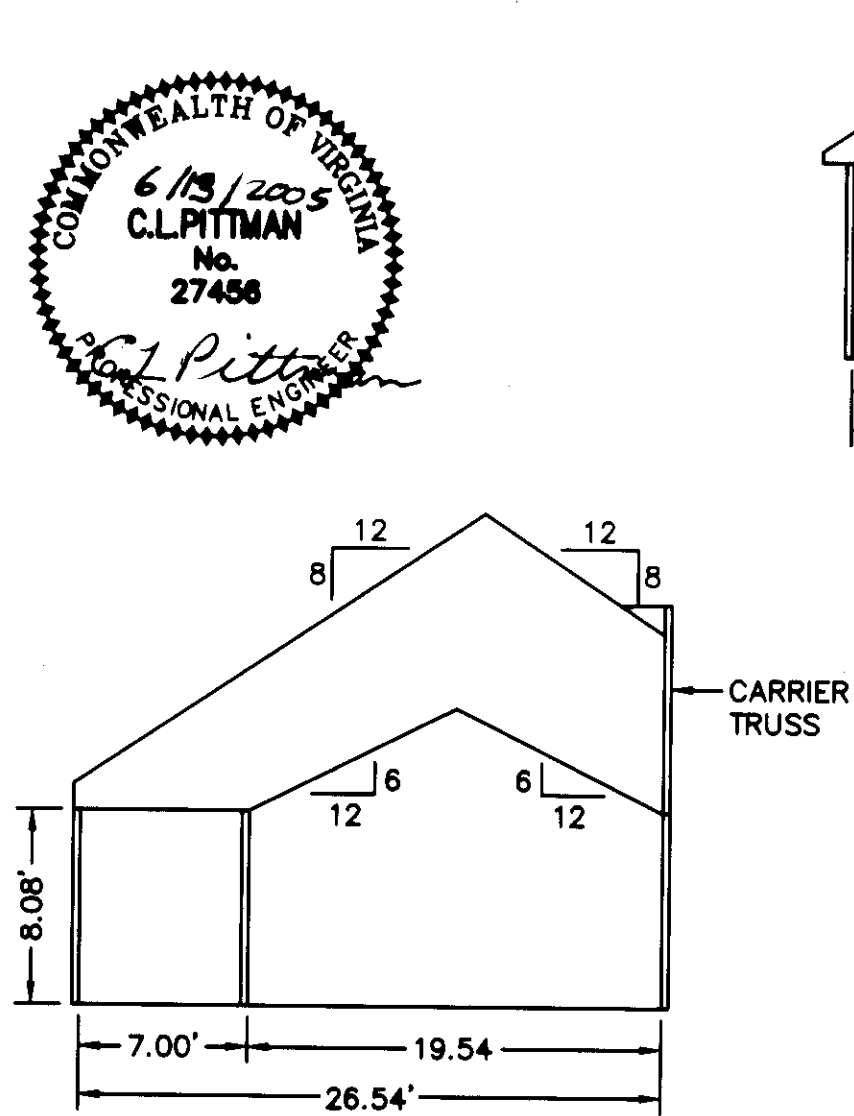


EXHIBIT "D"
PLAT OF
VILLAS ON SHADY BANKS
A CONDOMINIUM
PHASE III
SHEET 3 OF 4

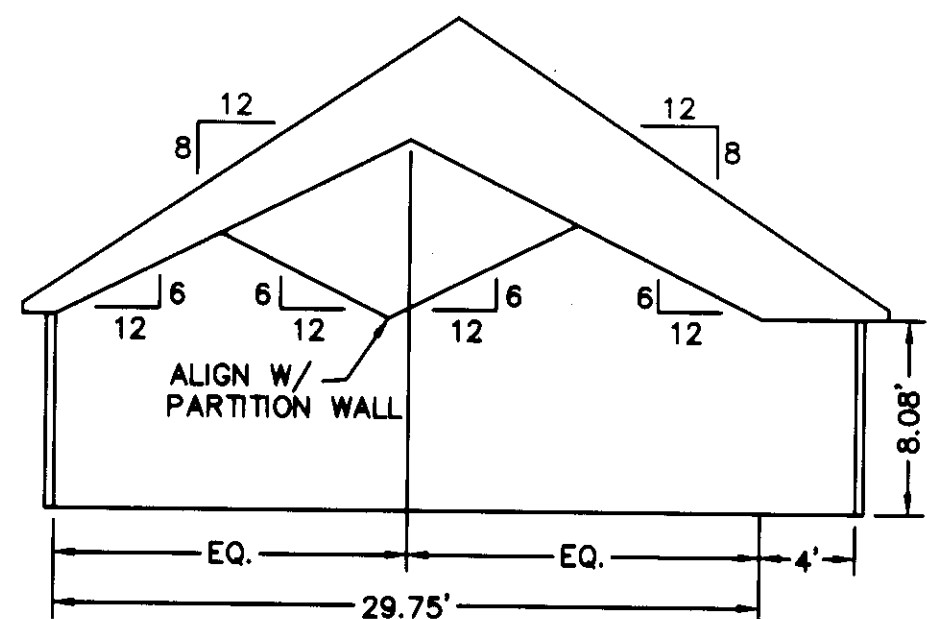
BETHEL DISTRICT - COUNTY OF YORK, VIRGINIA
SCALE 1/8"=1'-0" MAY 27, 2005



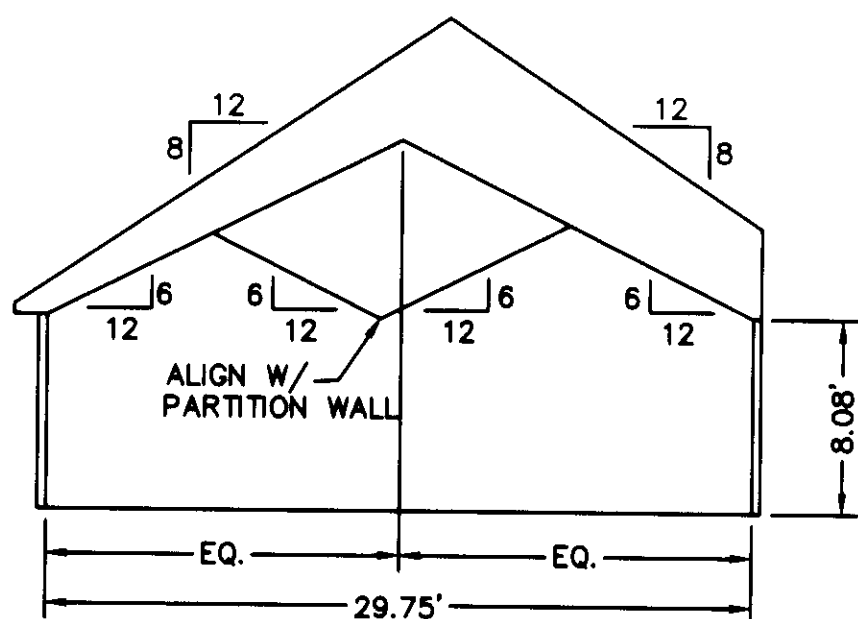
THE SIRINE GROUP, LTD.
SURVEYORS • ENGINEERS • PLANNERS
4794 GEORGE WASHINGTON MEMORIAL HIGHWAY
U.S. ROUTE 17, P.O. BOX 450
WHITE MARSH, VIRGINIA 23183
(804) 693-9548



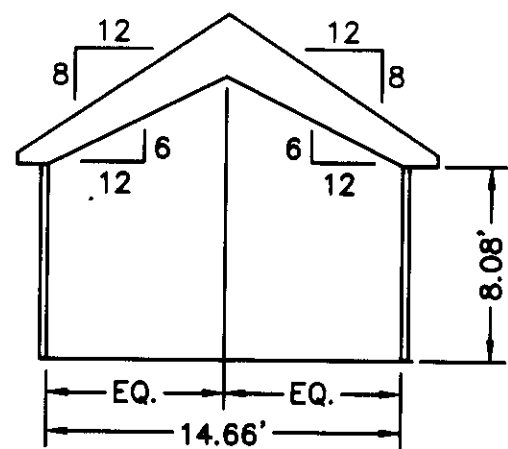
SECTION A-A



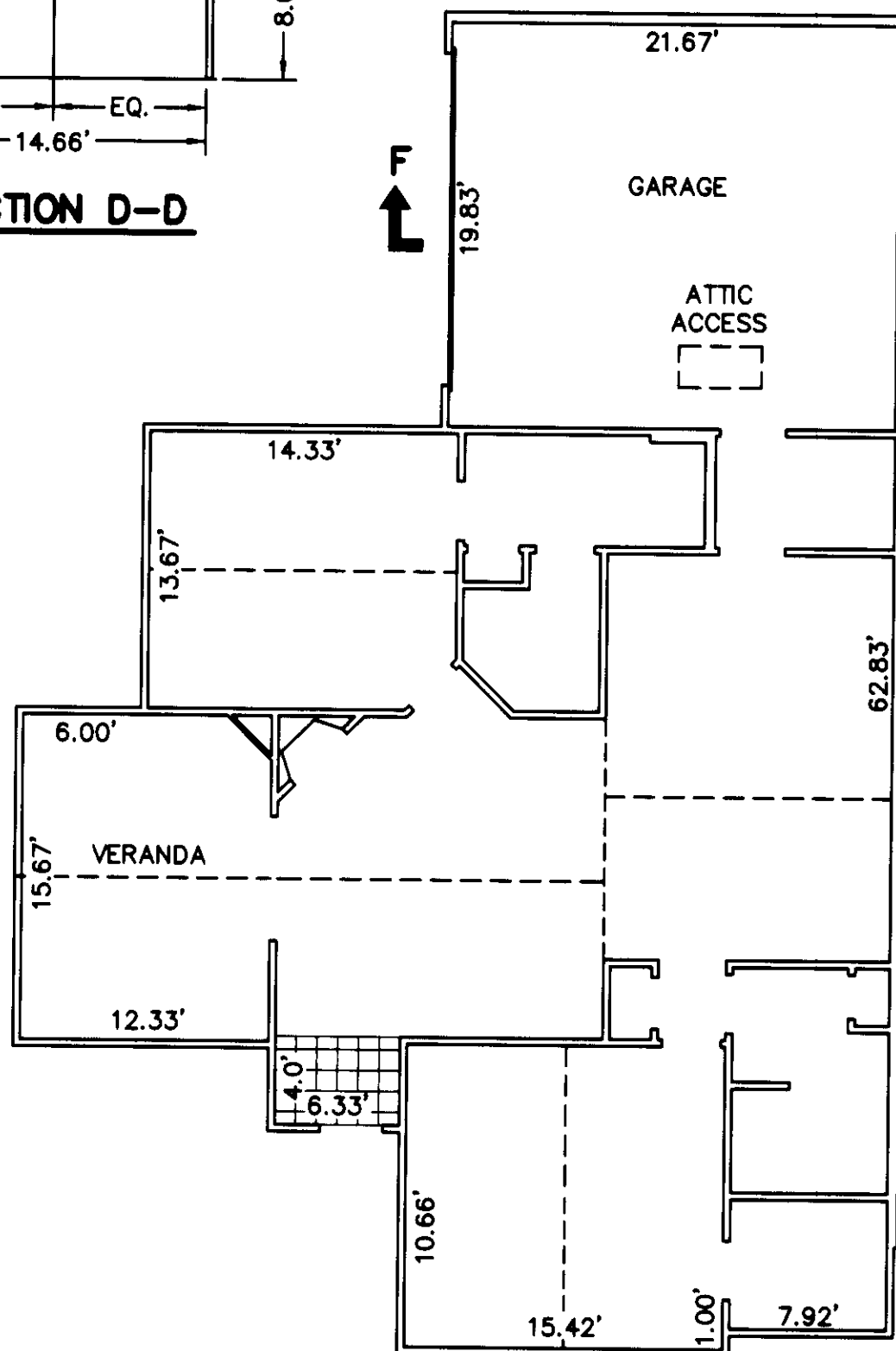
SECTION B-B



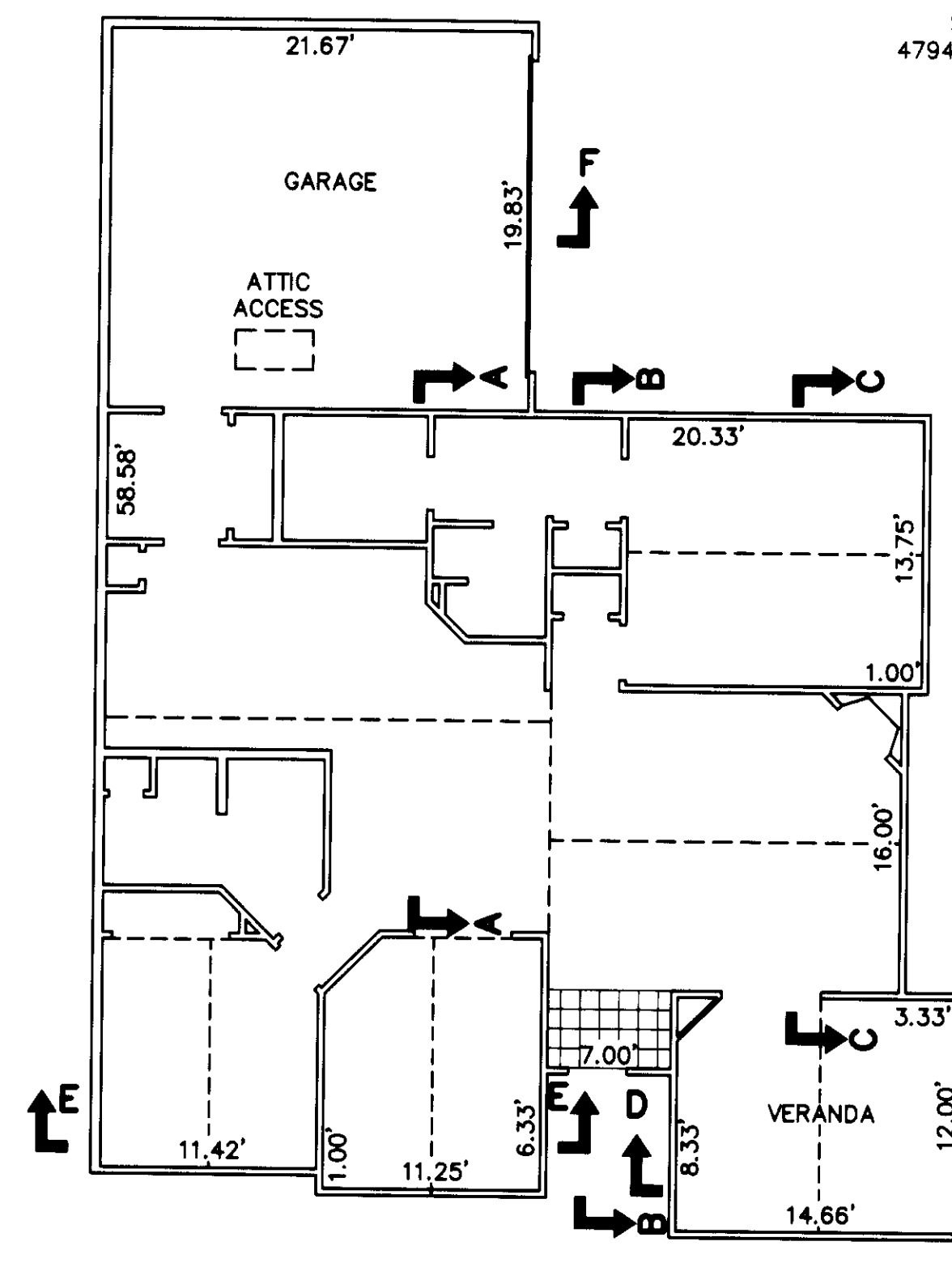
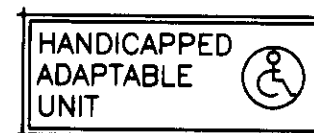
SECTION C-C



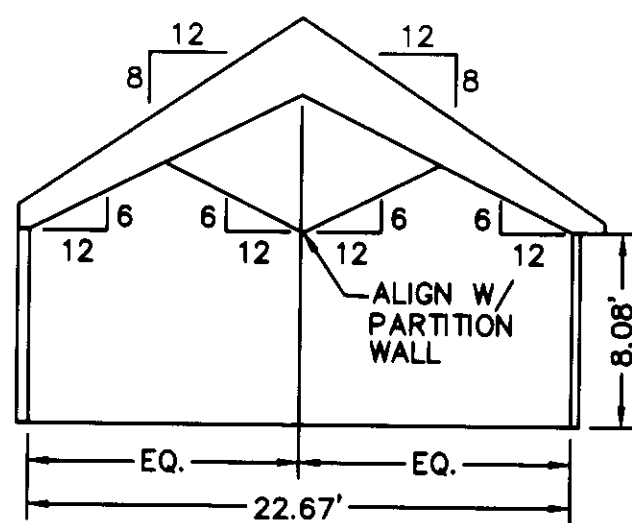
SECTION D-D



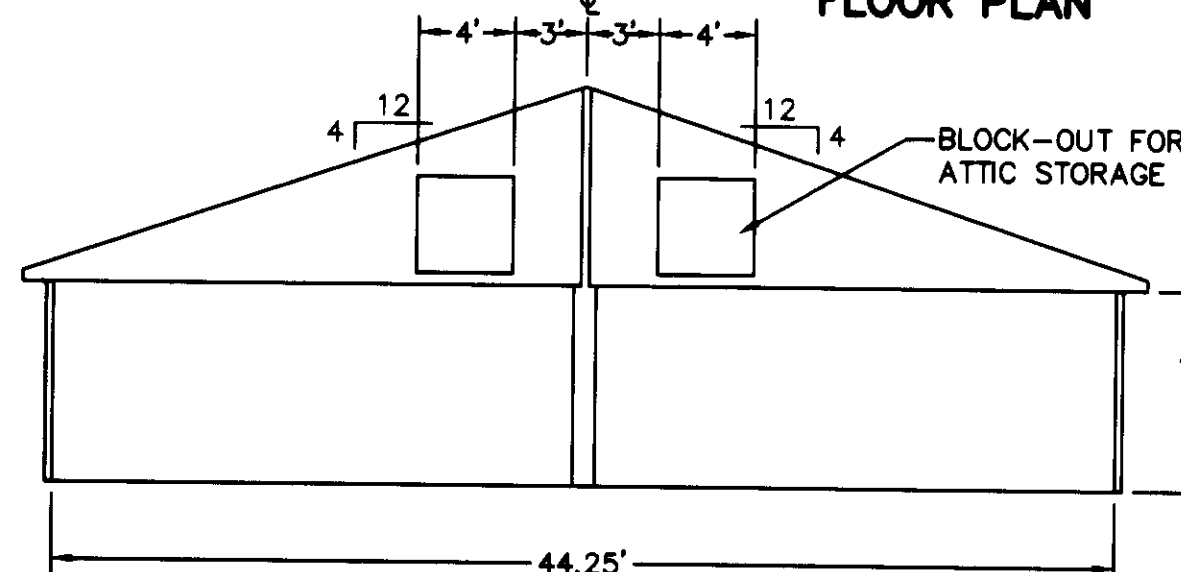
**BUILDING 16-2, 16-4,
21-1 & 21-3 ABBEY
FLOOR PLAN**



**BUILDING 16-1, 16-3,
21-2 & 21-4 CANTERBURY
FLOOR PLAN**



SECTION E-E



SECTION F-F

APPROVED:
YORK COUNTY BOARD OF SUPERVISORS

BY: Al Maddalena
PLAT APPROVING AGENT

DATE: 6/15/05

NOTES:
1. ALL BUILDING DIMENSIONS SHOWN HEREON ARE INTERIOR DIMENSIONS AND ARE IN FEET.

STATE OF VIRGINIA
COUNTY OF YORK

IN THE CLERK'S OFFICE OF THE CIRCUIT COURT FOR YORK COUNTY-
POQUOSON, VIRGINIA, THIS 16 DAY OF June, 2005,
THIS PLAT WAS PRESENTED AND ADMITTED TO RECORD AS THE
LAW DIRECTS AS INSTRUMENT NUMBER 050014307.

TESTE: Lynn S. Jenkins
CLERK

BY: Christina E. Norman
DEPT. CLERK