

Design File - C:\documents\ms_jacob\4627\4627.dwg Ref. File - c:\documents\ms_jacob\4627\4627.dwg Ref. File - c:\documents\ms_jacob\4627\4627.dwg Ref. File - c:\documents\ms_jacob\4627\4627.dwg Ref. File - c:\documents\ms_jacob\4627\4627.dwg Ref. File - c:\documents\ms_jacob\4627\4627.dwg Ref. File - c:\documents\ms_jacob\4627\4627.dwg
 Design level on - 1:50:52.63 Levels On - 1:30:32.50:52.52:63 Levels On - 1:63 Levels On - 1:63 Levels On - 1:63 Levels On - 1:63 Levels On - 1:63 Levels On - 1:63

DESIGNED BY: J. DIANE GEDDGE, 0751 925-3524
 HAMPTON ROADS DISTRICT DESIGN UNIT

Power Lines Property of:
 Dominion Virginia Power
 1600 Hamilton Ave.
 Portsmouth, VA 23707-3528

Power Transmission Lines
 Property of:
 Dominion Virginia
 Power Transmission
 2400 Grayland Ave.
 Richmond, VA 23220-5260

Telephone Lines Property of:
 Verizon Virginia, Inc.
 5701 Cleveland St., 5th Floor
 Virginia Beach, VA 23462

Natural Gas (Distribution)
 Property of:
 Virginia Natural Gas
 5100 E. Virginia Beach Blvd.
 Norfolk, VA 23502

Cable TV Lines Property of:
 Cox Communications
 1323 W. Pambrake Ave.
 Hampton, VA 23661

Natural Gas (Transmission)
 Property of:
 Colonial Pipeline Co.
 2607 Willard Rd.
 Richmond, VA 23294

Water Lines Property of:
 City of Newport News
 Waterworks
 425 Industrial Park Dr.
 Newport News, VA 23608

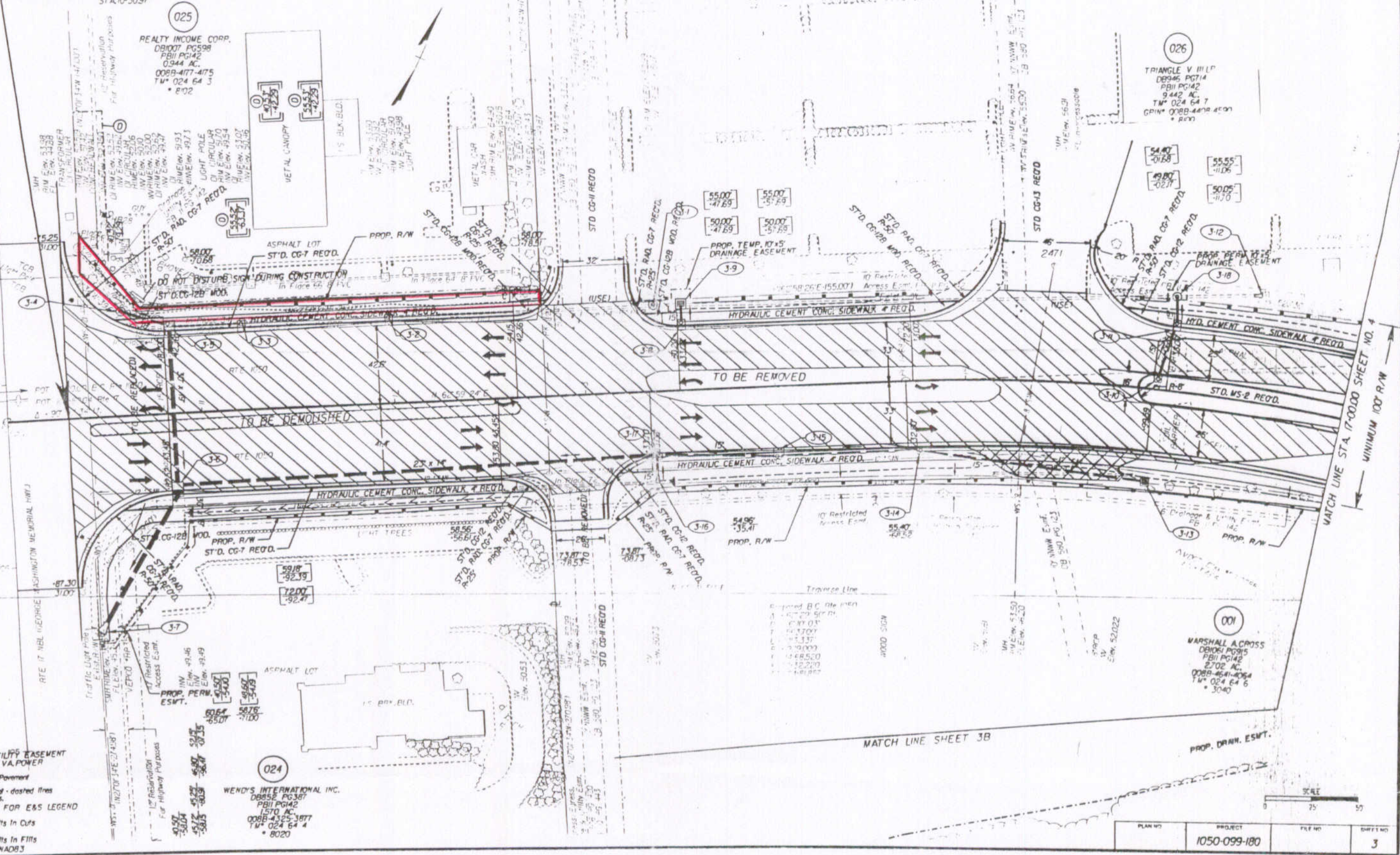
Sanitary Sewer Force
 Main Lines
 Property of:
 HRSD
 PO Box 5911
 Virginia Beach, VA 23471-0911

Sanitary Sewer Lines
 Property of:
 York County
 PO Box 532
 201 Goodwin Neck Rd.
 Yorktown, VA 23690-0532

DESIGN FEATURES RELATING TO CONSTRUCTION
 OR TO REGULATION AND CONTROL OF TRAFFIC
 MAY BE SUBJECT TO CHANGE AS DEEMED
 NECESSARY BY THE DEPARTMENT

REVISED	STATE	FEDERAL AID	ROUTE	STATE	PROJECT	SHEET NO.
10-18-04 11-17-04	VA		1050		1050-099-180.C-501 R/W-201	3

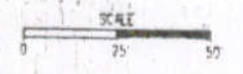
BEG. PROJ. 1050-099-180, PE-101, RW-201, C-501
 STA. 10+30.97



PERMANENT UTILITY EASEMENT FOR DOMINION VA POWER
 Denotes Demolition of Pavement
 Note: Figures in brackets and dot-dashed lines denote Permanent Easements.
 NOTE: SEE GENERAL NOTES FOR E&S LEGEND
 [---] Denotes Construction Limits In Cuts
 [---] Denotes Construction Limits In Fills
 BEARINGS BASED ON GPS NAD83

001
 MARSHALL A CROSS
 DB001 PG015
 FBI PG142
 9.442 AC.
 008B-447-4064
 T.M. 024 64 6
 * 3040

024
 WENDY'S INTERNATIONAL INC.
 DB85E PG387
 FBI PG142
 1570 AC.
 008B-4355-3877
 T.M. 024 64 4
 * 8020



PLAN NO.	PROJECT	FILE NO.	SHEET NO.
	1050-099-180		3

01/17/2004 08:53:22