

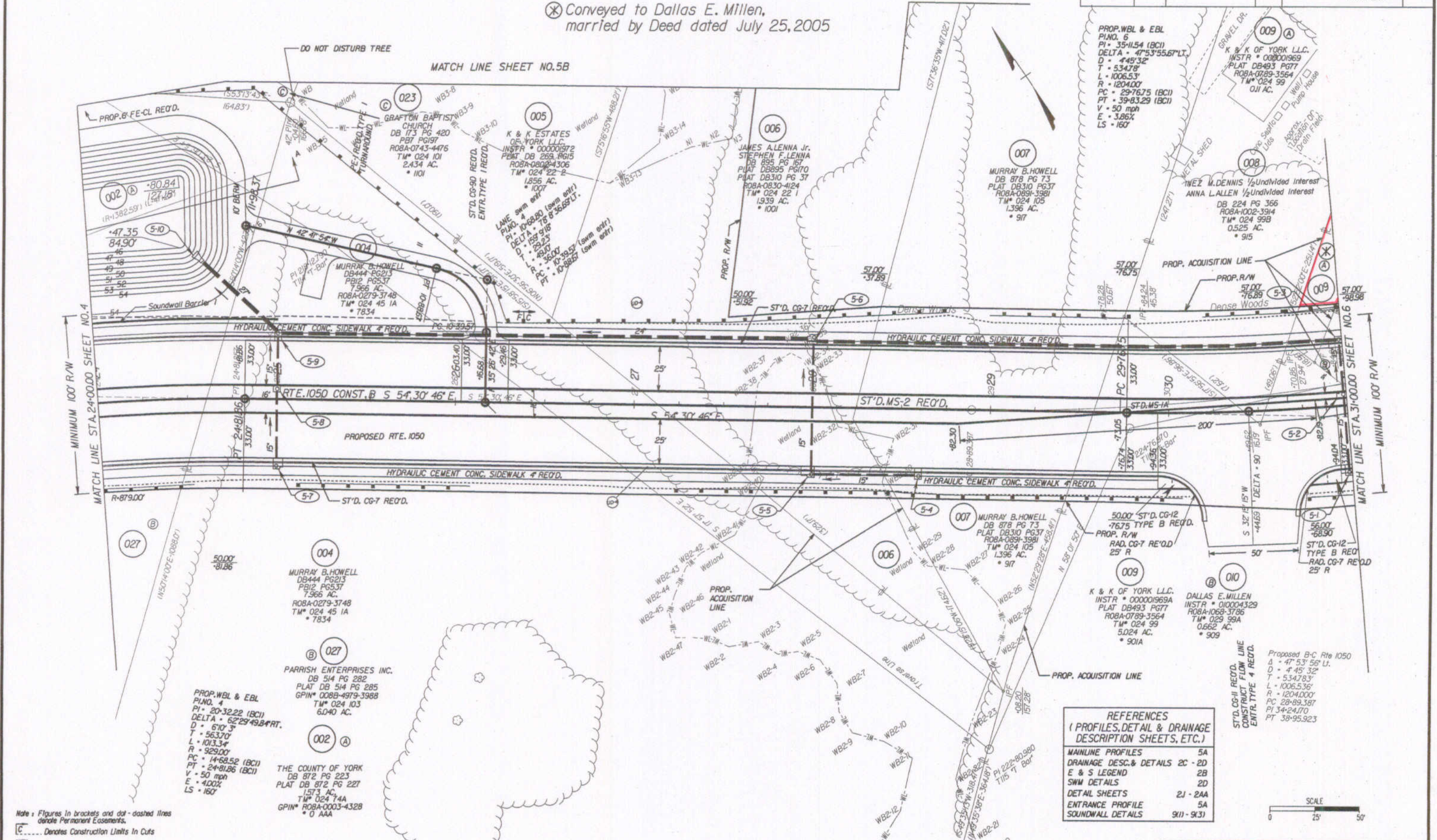
Design File - c:\documents of ms_jacob\ref\4627\4627.dwg Ref. File - c:\documents of ms_jacob\ref\4627.dwg Ref. File - c:\documents of ms_jacob\ref\4627.dwg Ref. File - c:\documents of ms_jacob\ref\4627.dwg Ref. File - c:\documents of ms_jacob\ref\4627.dwg Ref. File - c:\documents of ms_jacob\ref\4627.dwg Ref. File - c:\documents of ms_jacob\ref\4627.dwg

SUPERVISED BY: SONJA HALLUMS-PONTON (757) 925-2560
DESIGNED BY: N. DIANE GEORGE (757) 925-3622
HAMPTON ROADS DISTRICT DESIGN UNIT

DESIGN FEATURES RELATING TO CONSTRUCTION OR TO REGULATION AND CONTROL OF TRAFFIC MAY BE SUBJECT TO CHANGE AS DEEMED NECESSARY BY THE DEPARTMENT

REVISED	STATE	FEDERAL AID PROJECT	ROUTE	STATE PROJECT	SHEET NO.
10-14-04 10-18-04 10-22-04 7-22-05	VA.		1050	1050-099-180, C-501 R/W-201	5

⊗ Conveyed to Dallas E. Millen, married by Deed dated July 25, 2005



**REFERENCES
(PROFILES, DETAIL & DRAINAGE DESCRIPTION SHEETS, ETC.)**

MAINLINE PROFILES	5A
DRAINAGE DESC. & DETAILS	2C - 2D
E & S LEGEND	2B
SWM DETAILS	2D
DETAIL SHEETS	2J - 2AA
ENTRANCE PROFILE	5A
SOUNDWALL DETAILS	9(J) - 9(K)

ST'D. CG-11 REO'D.
CONSTRUCT FLOW LINE
ENTR. TYPE 4 REO'D.

Proposed B-C Rte 1050
A - 47' 53" 55' LT.
D - 4' 45" 32"
T - 53478.3'
L - 1006.536'
R - 1204.000'
PC 28-89.387
PI 34-24.070
PT 38-95.923

Note: Figures in brackets and dot-dashed lines denote Permanent Easements.
C... Denotes Construction Limits In Cuts
F... Denotes Construction Limits In Fills

PLAN NO.	PROJECT	FILE NO.	SHEET NO.
	1050-099-180		5

2005 AUG 23 AM 11:07

7/22/2005 09:16