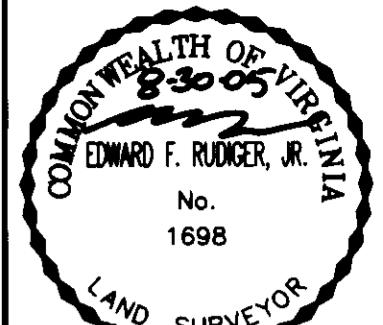


SUBDIVISION PLAT OF HAWK'S LANDING



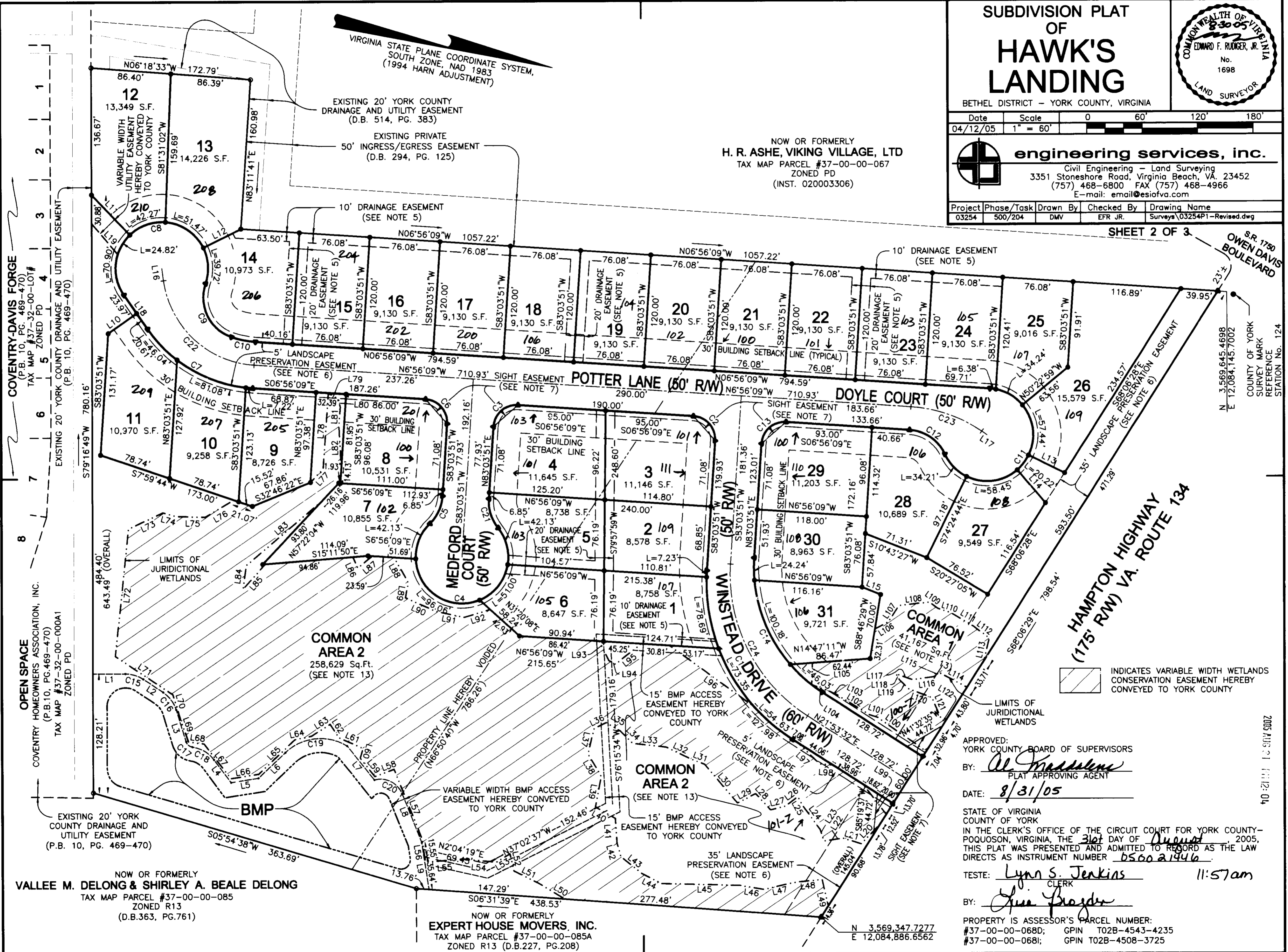
BETHEL DISTRICT - YORK COUNTY, VIRGINIA

Date	Scale	0	60'	120'	180'
04/12/05	1" = 60'				

engineering services, inc.
 Civil Engineering - Land Surveying
 3351 Stoneshore Road, Virginia Beach, VA. 23452
 (757) 468-6800 FAX (757) 468-4966
 E-mail: email@esiofva.com

Project	Phase/Task	Drawn By	Checked By	Drawing Name
03254	500/204	DMW	EFR JR.	Survey\03254P1-Revised.dwg

SHEET 2 OF 3



APPROVED: YORK COUNTY BOARD OF SUPERVISORS

BY: *Al. Massellens*
PLAT APPROVING AGENT

DATE: 8/31/05

STATE OF VIRGINIA COUNTY OF YORK IN THE CLERK'S OFFICE OF THE CIRCUIT COURT FOR YORK COUNTY-POQUOSON, VIRGINIA, THE 31st DAY OF August, 2005, THIS PLAT WAS PRESENTED AND ADMITTED TO RECORD AS THE LAW DIRECTS AS INSTRUMENT NUMBER 056021446

TESTE: *Lynn S. Jenkins* 11:57am
CLERK

BY: *Gene Bradley*

PROPERTY IS ASSESSOR'S PARCEL NUMBER:
#37-00-00-068D; GPIN T02B-4543-4235
#37-00-00-068I; GPIN T02B-4508-3725

NOW OR FORMERLY VALLEE M. DELONG & SHIRLEY A. BEALE DELONG
TAX MAP PARCEL #37-00-00-085
ZONED R13
(D.B.363, PG.761)

NOW OR FORMERLY EXPERT HOUSE MOVERS, INC.
TAX MAP PARCEL #37-00-00-085A
ZONED R13 (D.B.227, PG.208)

COVENTRY-DAVIS FORGE
(P.B. 10, PG. 469-470)
TAX MAP #37-32-00-LOT# ZONED PD

OPEN SPACE
COVENTRY HOMEOWNERS ASSOCIATION, INC.
(P.B.10, PG.469-470)
TAX MAP #37-32-00-000A1 ZONED PD

S.R. 1750 OWEN DAVIS BOULEVARD
COUNTY OF YORK SURVEY MARK REFERENCE STATION No. 124
N 3,569,645.4698
E 12,084,145.7002