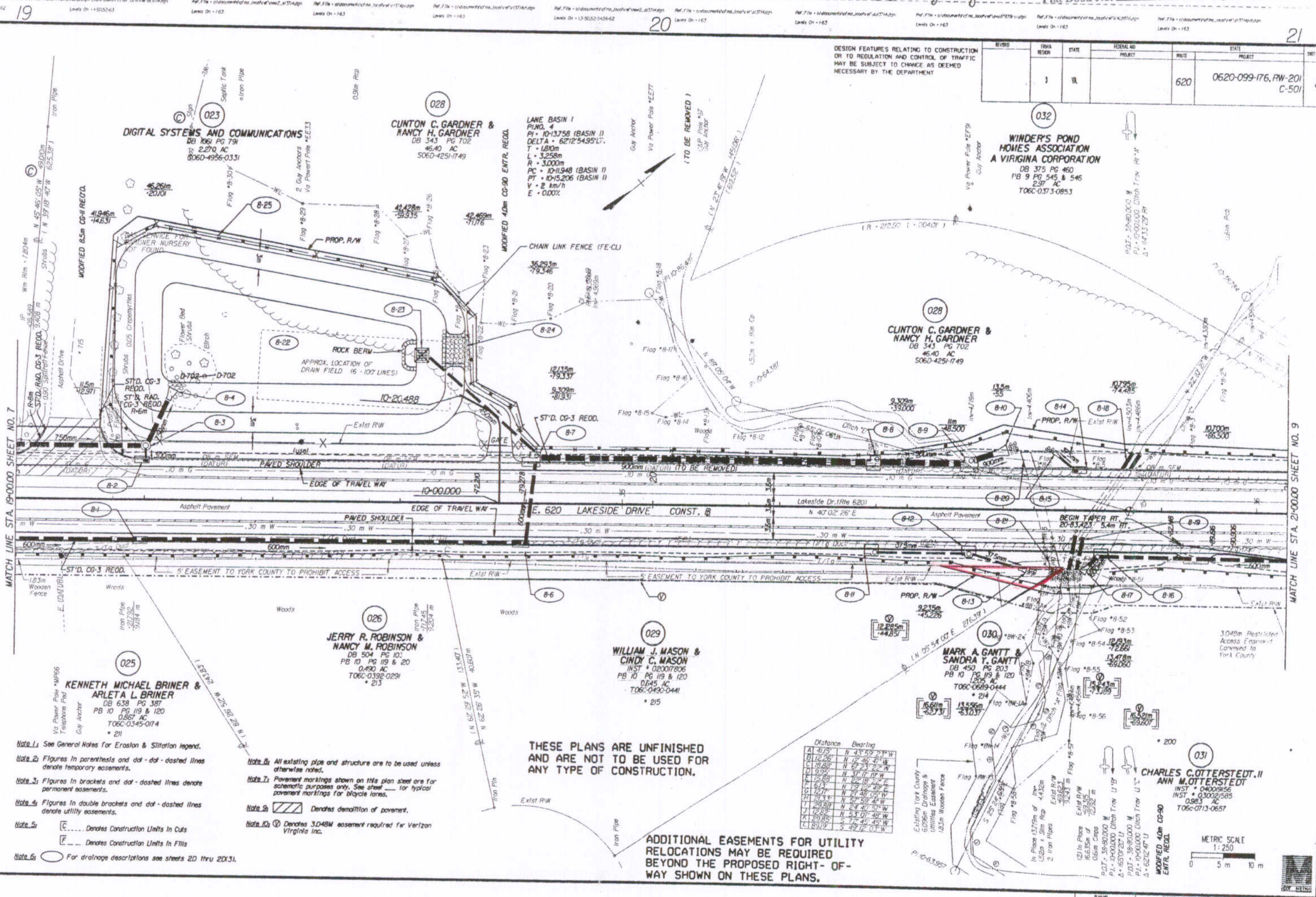


Design File - C:\Documents\... Ref. File - C:\Documents\... Levels On - 163

HAMPTON ROADS DISTRICT DESIGN UNIT



DESIGN FEATURES RELATING TO CONSTRUCTION OR TO REGULATION AND CONTROL OF TRAFFIC MAY BE SUBJECT TO CHANGE AS DEEMED NECESSARY BY THE DEPARTMENT

ROUTE	STATE	FEDERAL AID PROJECT	ROUTE	STATE	PROJECT	SHEET NO.
620	VA		620	VA	0620-099-176, RW-201 C-501	8

THESE PLANS ARE UNFINISHED AND ARE NOT TO BE USED FOR ANY TYPE OF CONSTRUCTION.

ADDITIONAL EASEMENTS FOR UTILITY RELOCATIONS MAY BE REQUIRED BEYOND THE PROPOSED RIGHT-OF-WAY SHOWN ON THESE PLANS.

Point	Distance	Bearing
A	41.75	N 43° 59' 21" W
B	12.26	N 12° 46' 4" W
C	18.88	N 67° 23' 2" W
D	9.95	N 37° 17' 19" W
E	15.63	N 27° 18' 22" E
F	6.17	N 75° 48' 29" E
G	12.71	N 21° 48' 09" W
H	20.14	N 54° 42' 57" W
I	29.88	N 24° 42' 57" W
J	12.85	S 72° 45' 45" W
K	28.85	S 72° 45' 45" W
L	89.19	S 42° 12' 03" W

- Note 1: See General Notes for Erosion & Siltation Legend.
- Note 2: Figures in parentheses and dot-dot-dashed lines denote temporary easements.
- Note 3: Figures in brackets and dot-dashed lines denote permanent easements.
- Note 4: Figures in double brackets and dot-dashed lines denote utility easements.
- Note 5: [C] Denotes Construction Units In Cuts; [F] Denotes Construction Units In Fills
- Note 6: [O] For drainage descriptions see sheets 2D thru 2DX3.
- Note 7: All existing pipe and structure are to be used unless otherwise noted.
- Note 8: Pavement markings shown on this plan sheet are for schematic purposes only. See sheet [] for typical pavement markings for bicycle lanes.
- Note 9: [Hatched] Denotes demolition of pavement.
- Note 10: [V] Denotes 3.048M easement required for Verizon Virginia Inc.

