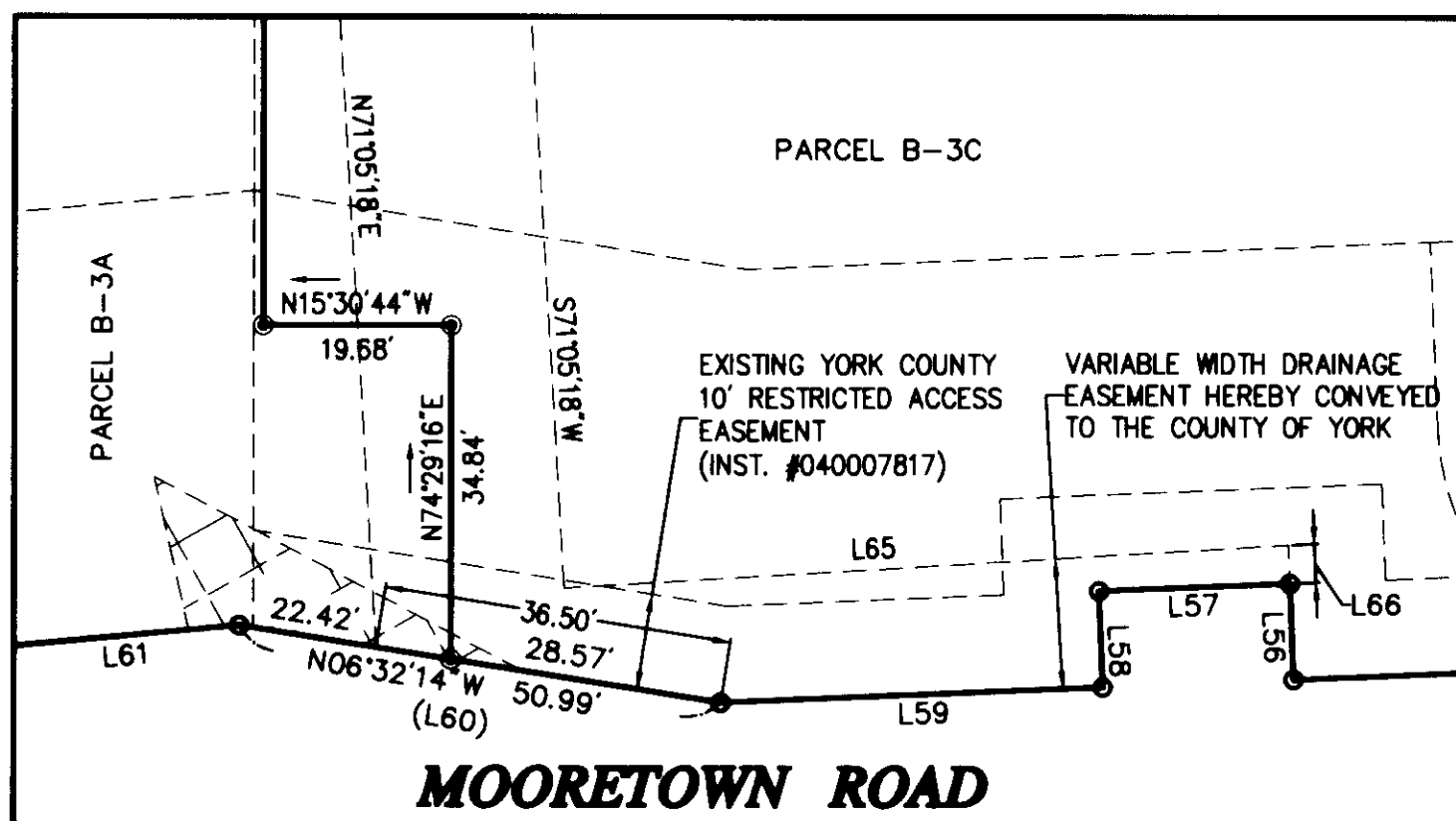
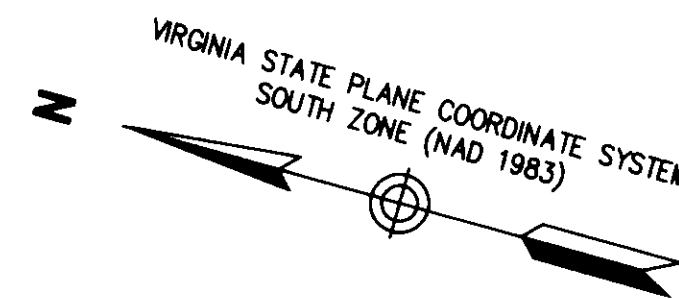


SUBDIVISION AND BOUNDARY LINE ADJUSTMENT
OF THE PROPERTY OF
BULIFANTS, L.P.
BEING
PARCEL B-3 AND BMP NO. 3
BRUTON MAGISTERIAL DISTRICT
COUNTY OF YORK, VIRGINIA

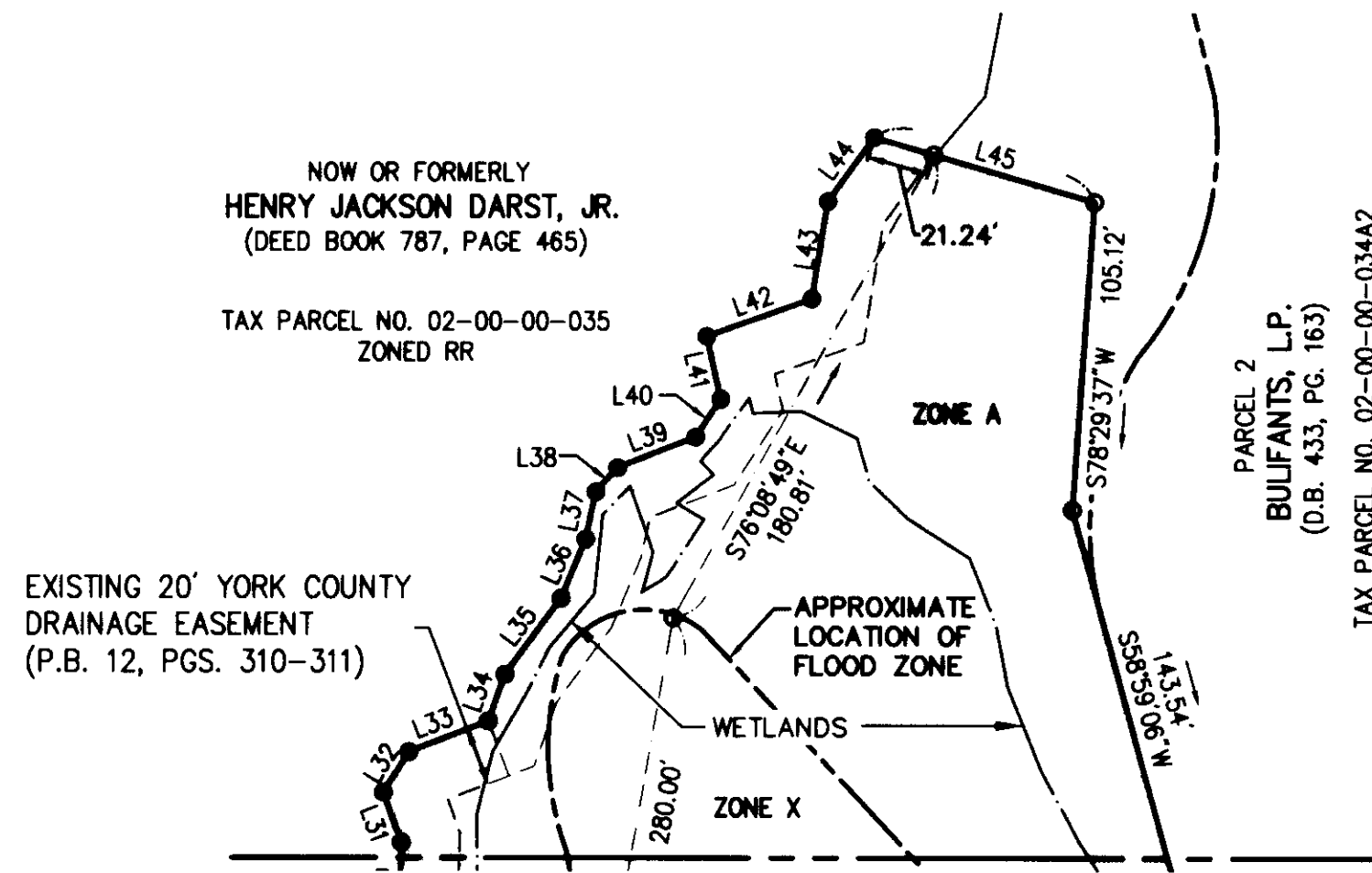
DATE: 08/23/05 SHEET 6 OF 6 SCALE: 1"=60'
PROJECT NO: 31392.01 DRAWN BY: DWP

VHB *Vanasse Hangen Brustlin, Inc.*
Transportation Land Development Environmental Services
11832 Rock Landing Drive, Suite 207
Newport News, Virginia 23606-4231
(757) 873-3386 • FAX (757) 873-0757

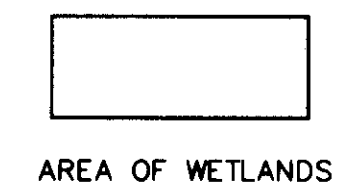
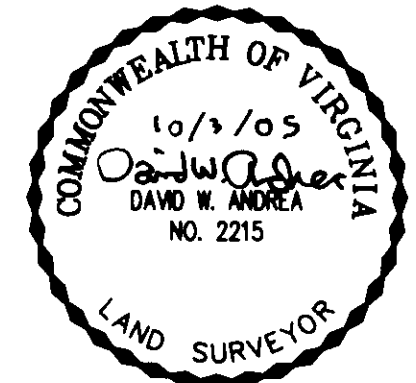
CURVE DATA TABLE						
NUMBER	RADIUS	DELTA	ARC LENGTH	TANGENT	CHORD	CHORD BEARING
C1	14.50'	49°53'46"	12.63'	6.75'	12.23'	N46°01'02"W
C2	225.50'	20°24'43"	80.34'	40.60'	79.91'	S31°16'31"E
C3	174.50'	25°58'08"	79.09'	40.24'	78.42'	N28°29'48"W
C4	14.50'	90°00'00"	22.78'	14.50'	20.51'	N29°29'16"E
C5	34.50'	69°21'54"	41.77'	23.87'	39.26'	N70°49'46"W
C6	34.50'	71°35'52"	43.11'	24.88'	40.36'	N38°41'17"E
C7	14.50'	90°00'00"	22.78'	14.50'	20.51'	N60°30'44"W
C8	14.50'	90°00'01"	22.78'	14.50'	20.51'	N29°29'17"E
C9	39.50'	53°51'14"	37.13'	20.06'	35.78'	N78°35'07"W
C10	55.50'	46°05'53"	44.65'	23.61'	43.46'	S74°42'26"E
C11	185.00'	25°58'08"	83.85'	42.66'	83.13'	S28°29'48"E
C12	215.00'	25°58'08"	97.45'	49.58'	96.62'	N28°29'48"W



DETAIL
SCALE: 1"=20'



MATCHLINE - SEE SHEET 5



LINE TABLE		
LINE	LENGTH	BEARING
L1	14.32'	S55°42'19"E
L2	46.42'	S17°15'47"W
L3	30.94'	S43°50'23"E
L4	11.13'	S68°35'50"E
L5	41.13'	S30°31'54"E
L6	10.29'	S82°08'32"E
L7	24.12'	N77°59'28"E
L8	30.51'	N80°28'21"E
L9	17.17'	S63°50'28"E
L10	64.43'	S15°16'39"W
L11	37.69'	S33°22'01"E
L12	27.27'	N82°21'16"E
L13	14.57'	N50°42'26"E
L14	25.21'	N37°38'00"E
L15	24.11'	N49°50'49"E
L16	17.28'	N87°19'15"E
L17	30.09'	S21°17'57"E
L18	56.78'	S20°11'41"W
L19	13.67'	S57°53'45"E
L20	50.67'	N88°26'32"E

LINE TABLE		
LINE	LENGTH	BEARING
L21	29.03'	N84°11'41"E
L22	26.77'	S74°39'37"E
L23	52.02'	S45°35'07"E
L24	41.21'	S45°35'07"E
L25	10.81'	S45°35'07"E
L26	40.76'	N88°16'15"E
L27	20.21'	N77°55'13"E
L28	5.19'	N41°43'27"E
L29	59.54'	N37°27'49"E
L30	31.29'	N76°16'19"E
L31	18.05'	N54°33'22"E
L32	16.42'	S73°36'29"E
L33	29.01'	S36°36'22"E
L34	16.67'	S85°59'06"E
L35	32.18'	S69°08'38"E
L36	21.72'	S82°41'35"E
L37	16.43'	N86°32'31"E
L38	11.25'	S63°44'18"E
L39	28.65'	S36°44'25"E
L40	15.45'	S72°18'39"E

LINE TABLE		
LINE	LENGTH	BEARING
L41	21.93'	N61°43'35"E
L42	38.11'	S35°04'16"E
L43	33.55'	N83°44'01"E
L44	26.99'	S69°32'05"E
L45	78.56'	S00°45'15"W
L46	37.85'	S77°49'01"W
L47	19.21'	S51°21'27"W
L48	19.31'	S21°16'04"W
L49	23.41'	S20°00'01"W
L50	65.93'	S28°34'48"W
L51	52.71'	S26°37'28"W
L52	37.16'	S70°38'26"W
L53	35.97'	S67°34'22"W
L54	69.22'	S89°59'56"W
L55	25.53'	N17°50'52"W
L56	10.00'	N72°09'10"E
L57	20.00'	N17°50'50"W
L58	10.00'	S72°09'10"W
L59	40.00'	N17°50'50"W
L60	50.99'	N06°32'14"W

LINE TABLE		
LINE	LENGTH	BEARING
L61	48.74'	N20°42'35"W
L62	93.24'	S17°59'07"E
L63	20.00'	S72°00'53"W
L64	74.08'	N17°59'07"W
L65	75.90'	S18°57'21"E
L66	4.02'	S72°09'10"W
L67	35.77'	S52°50'52"E
L68	27.29'	S37°09'08"W
L69	12.71'	S37°09'08"W
L70	51.62'	N52°50'52"W
L71	58.21'	S72°09'08"W
L72	40.00'	N17°50'52"W
L73	79.03'	N72°09'08"E
L74	36.67'	S52°50'52"E
L75	39.70'	S15°30'44"E
L76	8.57'	N82°14'37"E
L77	34.52'	S15°30'44"E
L78	34.84'	N74°29'16"E
L79	19.68'	N15°30'44"W

Approved:
York County Board Of Supervisors

BY: *Al Maddalena*
PLAT APPROVING AGENT
DATE: 10/17/05

**State Of Virginia
County Of York**

IN THE CLERK'S OFFICE OF THE CIRCUIT COURT FOR THE COUNTY OF YORK-POQUOSON,
THE 10th DAY OF October, 2005. THIS MAP WAS PRESENTED AND ADMITTED
TO RECORD AS THE LAW DIRECTS AS INSTRUMENT NUMBER 050025933

TESTE: *Lynn S. Jenkins*
CLERK
BY: *Traci Bogden, D.C.*