

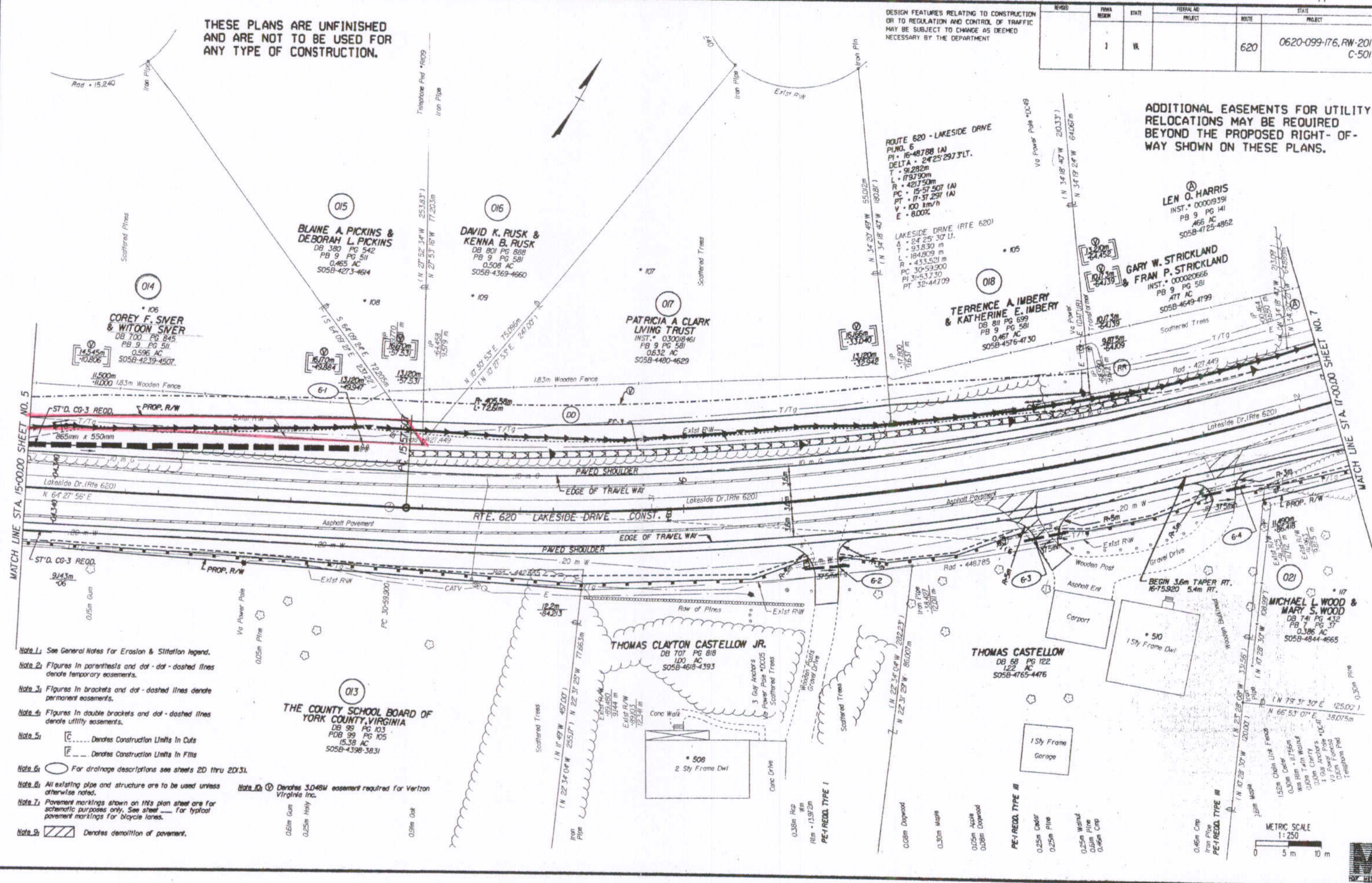
HAMPTON ROADS DISTRICT DESIGN UNIT

THESE PLANS ARE UNFINISHED AND ARE NOT TO BE USED FOR ANY TYPE OF CONSTRUCTION.

DESIGN FEATURES RELATING TO CONSTRUCTION OR TO REGULATION AND CONTROL OF TRAFFIC MAY BE SUBJECT TO CHANGE AS DEEMED NECESSARY BY THE DEPARTMENT

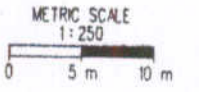
ROUTE	FHWA NUMBER	STATE PROJECT	ROUTE	STATE PROJECT	SHEET NO.
1	VA		620	0620-099-176, RW-201 C-501	6

ADDITIONAL EASEMENTS FOR UTILITY RELOCATIONS MAY BE REQUIRED BEYOND THE PROPOSED RIGHT-OF-WAY SHOWN ON THESE PLANS.



- Note 1: See General Notes For Erosion & Stabilization legend.
- Note 2: Figures in parenthesis and dot-dash-dotted lines denote temporary easements.
- Note 3: Figures in brackets and dot-dashed lines denote permanent easements.
- Note 4: Figures in double brackets and dot-dashed lines denote utility easements.
- Note 5: C..... Denotes Construction Limits In Cuts  
E..... Denotes Construction Limits In Fills
- Note 6: For drainage descriptions see sheets 2D thru 2D(31).
- Note 8: All existing pipe and structure are to be used unless otherwise noted.
- Note 7: Pavement markings shown on this plan sheet are for schematic purposes only. See sheet \_\_\_\_\_ for typical pavement markings for bicycle lanes.
- Note 9: Denotes demolition of pavement.

- Note 10: Denotes 3.048m easement required for Vertron Virginia Inc.



SUPERVISED BY: D. B. HARRIS, 07/27/2005, 0657  
DESIGNED BY: CHERYL STAMUKOS, 07/27/2005, 0658  
CADD OPERATOR: GREGORY HARRIS, 07/27/2005, 0659  
REVISED BY:

2/11/2005 02:06:32