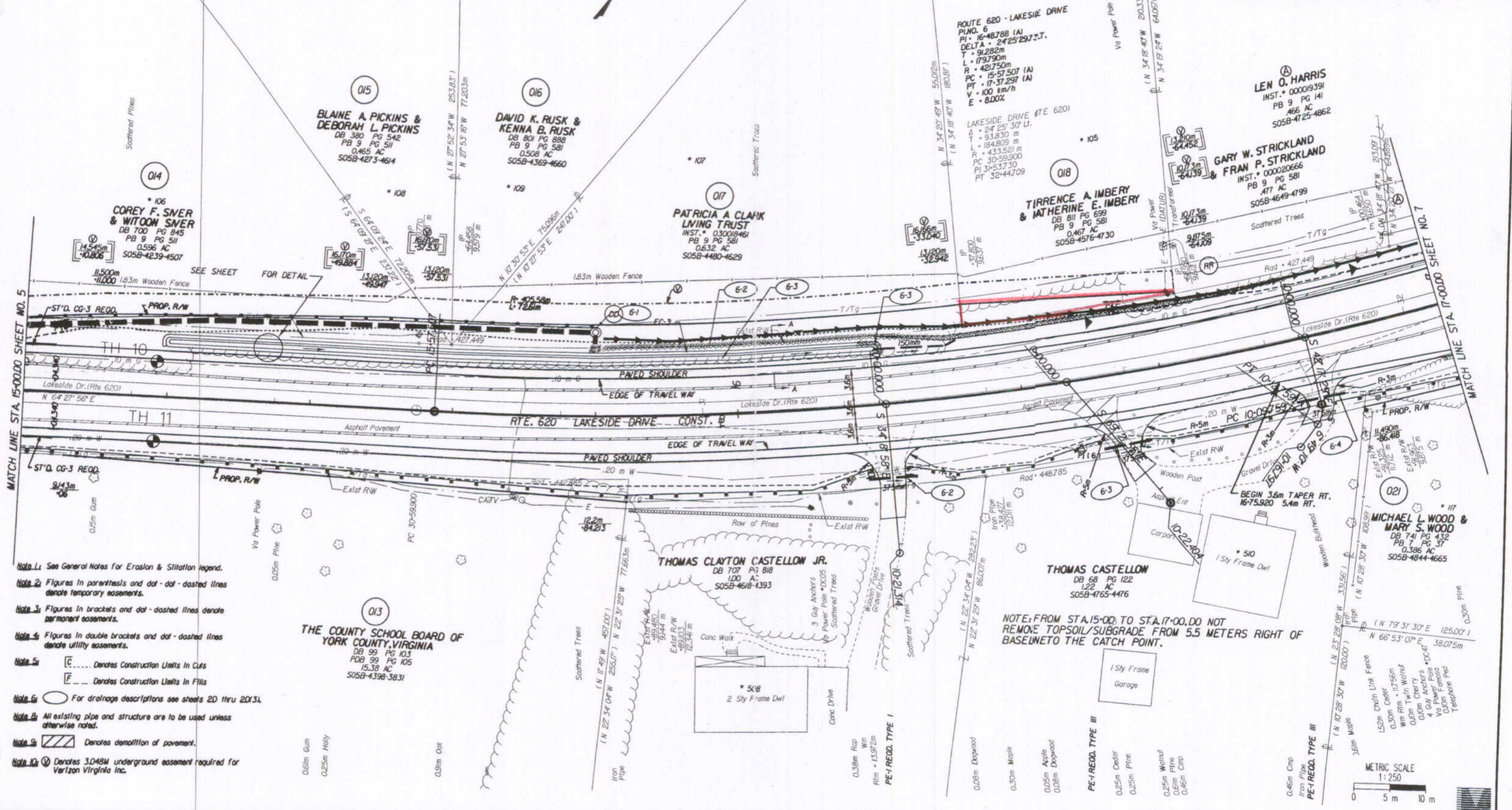


THESE PLANS ARE UNFINISHED AND ARE NOT TO BE USED FOR ANY TYPE OF CONSTRUCTION.

DESIGN FEATURES RELATING TO CONSTRUCTION OR TO REGULATION AND CONTROL OF TRAFFIC MAY BE SUBJECT TO CHANGE AS DEEMED NECESSARY BY THE DEPARTMENT

REVISED	FHWA REGION	STATE	FEDERAL AID PROJECT	ROUTE	STATE PROJECT	SHEET NO.
	1	VA		620	0620-099-176, C-501	6

State Highway 169
Plat Book No. 9 Page 169



- Note 1: See General Notes for Erosion & Siltation legend.
- Note 2: Figures in parenthesis and dot-dot-dashed lines denote temporary easements.
- Note 3: Figures in brackets and dot-dashed lines denote permanent easements.
- Note 4: Figures in double brackets and dot-dashed lines denote utility easements.
- Note 5: [C] Denotes Construction Limits In Cuts; [E] Denotes Construction Limits In Fills
- Note 6: For drainage descriptions see sheets 2D thru 2D31.
- Note 7: All existing pipe and structure are to be used unless otherwise noted.
- Note 8: [Hatched] Denotes demolition of pavement.
- Note 9: [V] Denotes 3.048M underground easement required for Verizon Virginia Inc.

NOTE: FROM STA. 15+00 TO STA. 17+00, DO NOT REMOVE TOPSOIL/SUBGRADE FROM 5.5 METERS RIGHT OF BASELINE TO THE CATCH POINT.



7/16/2005 09:21:39