

EXHIBIT "C"

PLAT OF VILLAS ON SHADY BANKS A CONDOMINIUM PHASE VI

(PROP. REF.: D.B. 54, P.107; D.B. 968, PGS.532-550) (INSTR. #050004943; INSTR. #030021817) SHEET 2 OF 5

BETHEL DISTRICT - COUNTY OF YORK, VIRGINIA

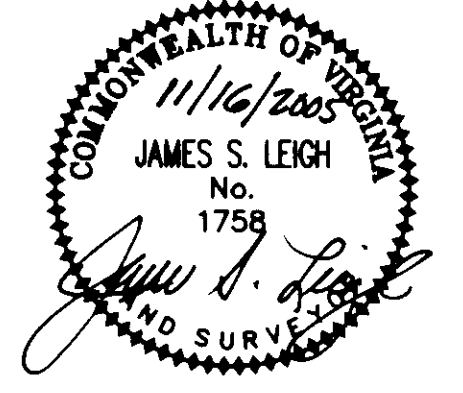
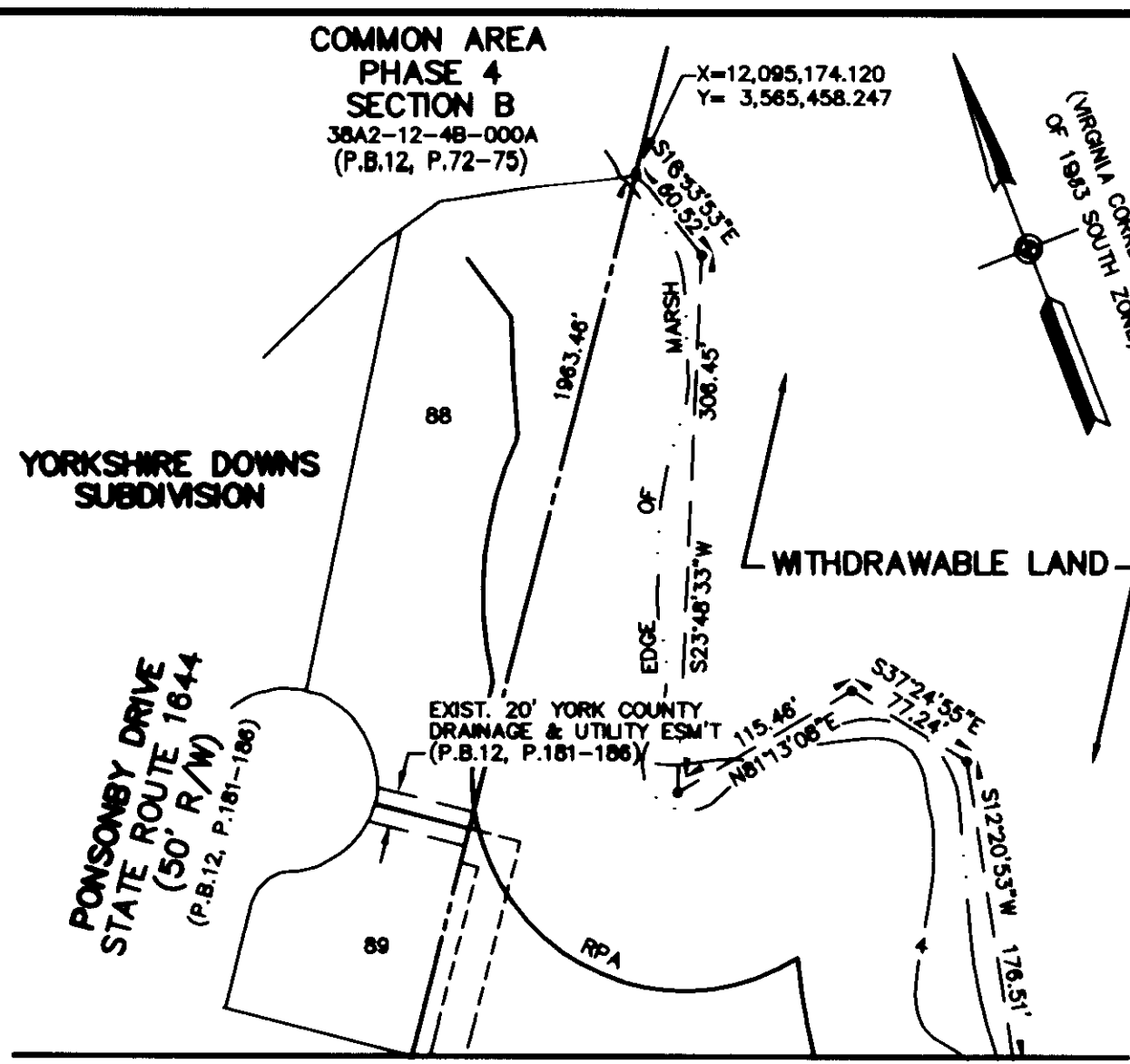
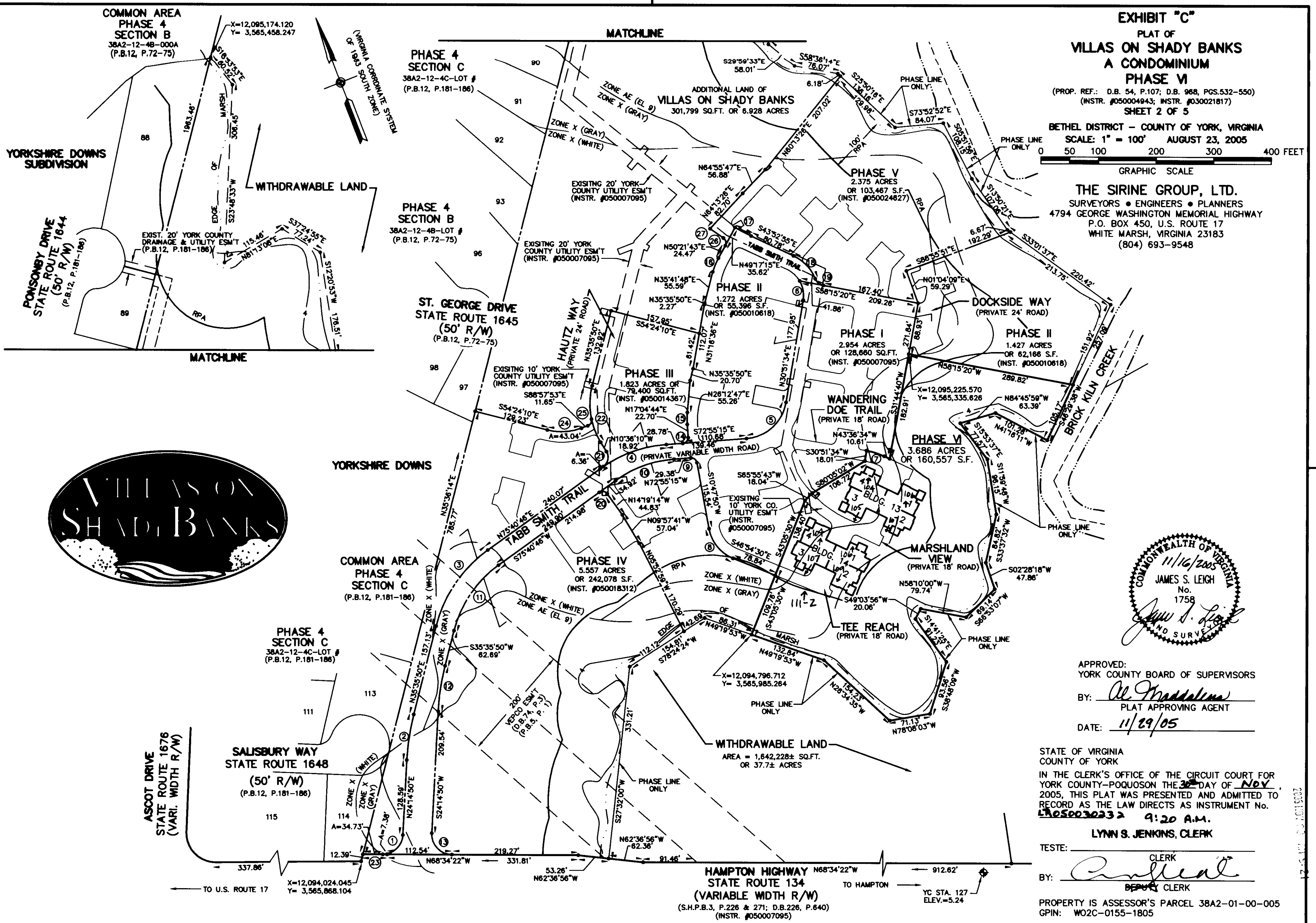
SCALE: 1" = 100' AUGUST 23, 2005



GRAPHIC SCALE

THE SIRINE GROUP, LTD.

SURVEYORS • ENGINEERS • PLANNERS 4794 GEORGE WASHINGTON MEMORIAL HIGHWAY P.O. BOX 450, U.S. ROUTE 17 WHITE MARSH, VIRGINIA 23183 (804) 693-9548



APPROVED: YORK COUNTY BOARD OF SUPERVISORS

BY: *Al Maddalena* PLAT APPROVING AGENT

DATE: 11/29/05

STATE OF VIRGINIA COUNTY OF YORK IN THE CLERK'S OFFICE OF THE CIRCUIT COURT FOR YORK COUNTY-POQUOSON THE 30th DAY OF NOV, 2005, THIS PLAT WAS PRESENTED AND ADMITTED TO RECORD AS THE LAW DIRECTS AS INSTRUMENT NO. LR050030232 9:20 A.M.

LYNN S. JENKINS, CLERK

TESTE: *[Signature]* CLERK BY: *[Signature]* DEPUTY CLERK

PROPERTY IS ASSESSOR'S PARCEL 38A2-01-00-005 GPIN: W02C-0155-1805