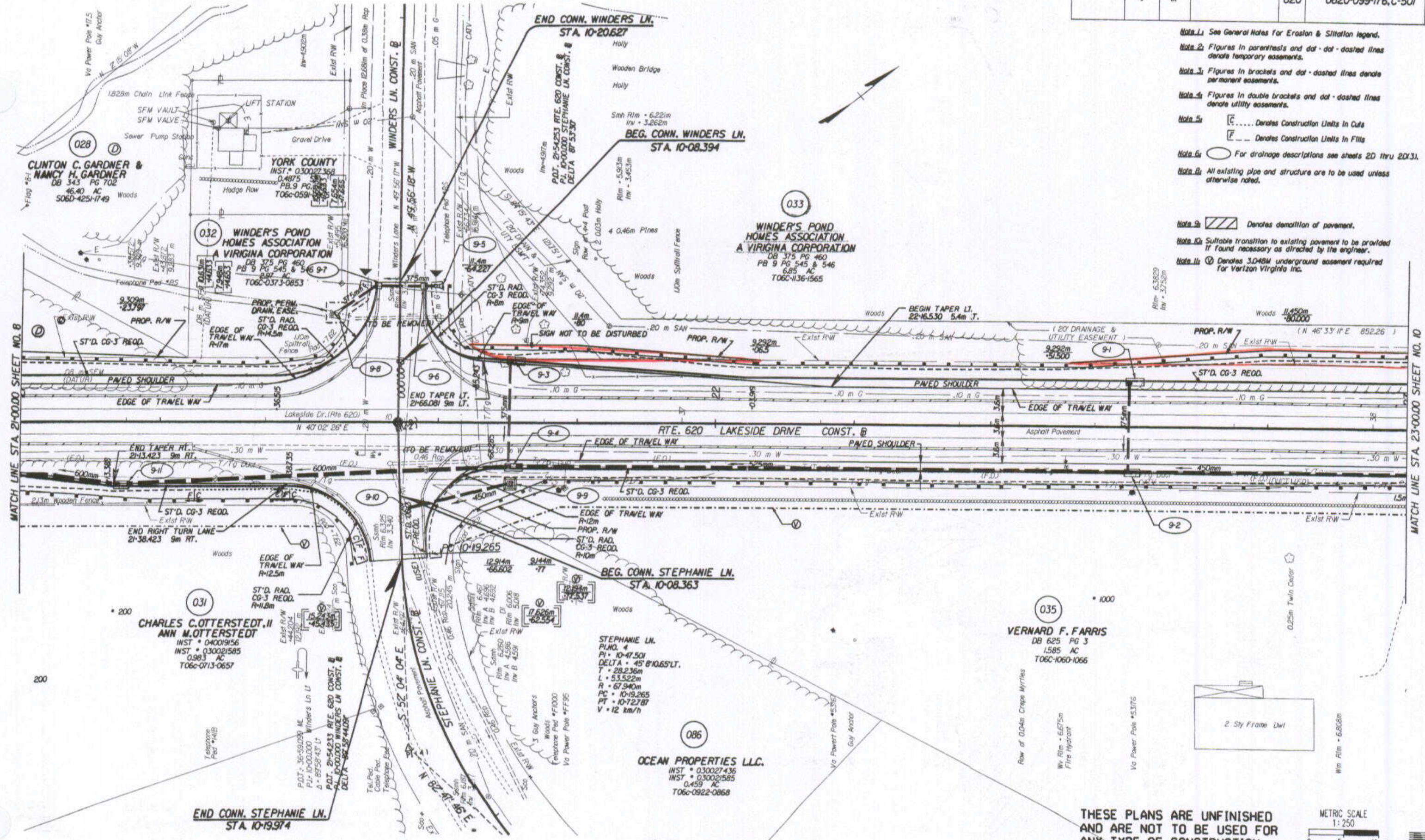


DESIGN FEATURES RELATING TO CONSTRUCTION OR TO REGULATION AND CONTROL OF TRAFFIC MAY BE SUBJECT TO CHANGE AS DEEMED NECESSARY BY THE DEPARTMENT

REVISED	RWA REGION	STATE	FEDERAL AID PROJECT	ROUTE	STATE PROJECT	SHEET
06-28-05	3	VA		620	0620-099-176, C-501	9

- Note 1: See General Notes for Erosion & Siltation legend.
- Note 2: Figures in parenthesis and dot-dot-dashed lines denote temporary easements.
- Note 3: Figures in brackets and dot-dashed lines denote permanent easements.
- Note 4: Figures in double brackets and dot-dashed lines denote utility easements.
- Note 5: [C]..... Denotes Construction Limits in Cuts  
[F]..... Denotes Construction Limits in Fills
- Note 6: ( ) For drainage descriptions see sheets 2D thru 2D(3).
- Note 7: All existing pipe and structure are to be used unless otherwise noted.
- Note 8: [Hatched] Denotes demolition of pavement.
- Note 9: Suitable transition to existing pavement to be provided if found necessary as directed by the engineer.
- Note 10: (V) Denotes 3.048M underground easement required for Verizon Virginia Inc.



THESE PLANS ARE UNFINISHED AND ARE NOT TO BE USED FOR ANY TYPE OF CONSTRUCTION.

METRIC SCALE 1:250  
0 5 m 10 m

PLAN NO.	PROJECT	PLAT NO.	SHEET NO.
A	0620-099-176		9