

HAMPTON ROADS DISTRICT DESIGN UNIT

Design File - C:\documents and settings\lee\work\03714\03714.dwg
Levels On - 15050-5436-62

Ref. File - c:\documents and settings\lee\work\03714\03714.dwg
Levels On - 163

Ref. File - c:\documents and settings\lee\work\03714\03714.dwg
Levels On - 15050-5436-62

Ref. File - c:\documents and settings\lee\work\03714\03714.dwg
Levels On - 163

Ref. File - c:\documents and settings\lee\work\03714\03714.dwg
Levels On - 163

Ref. File - c:\documents and settings\lee\work\03714\03714.dwg
Levels On - 163

Ref. File - c:\documents and settings\lee\work\03714\03714.dwg
Levels On - 163

Ref. File - c:\documents and settings\lee\work\03714\03714.dwg
Levels On - 163

Ref. File - c:\documents and settings\lee\work\03714\03714.dwg
Levels On - 163

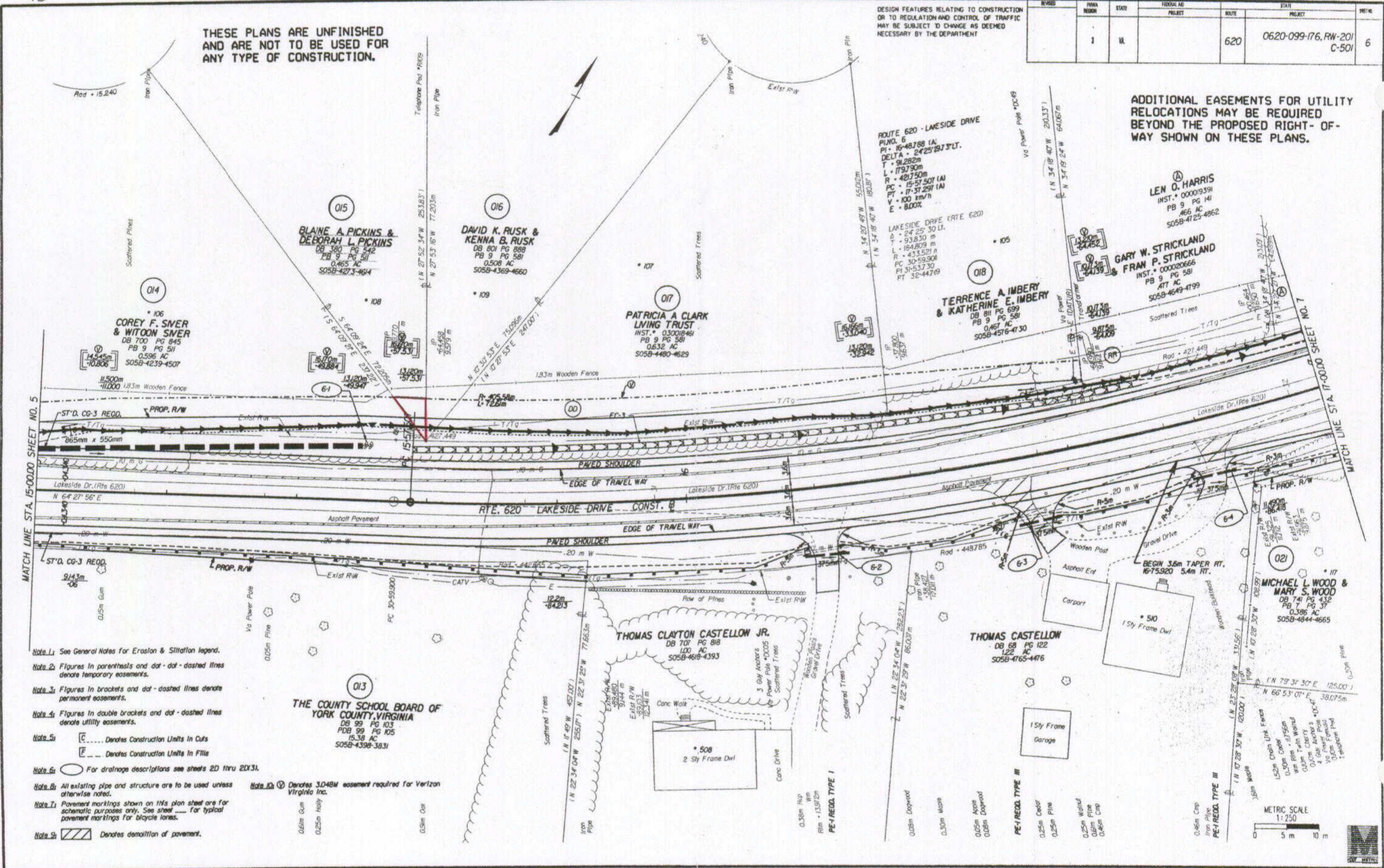
Ref. File - c:\documents and settings\lee\work\03714\03714.dwg
Levels On - 163

THESE PLANS ARE UNFINISHED
AND ARE NOT TO BE USED FOR
ANY TYPE OF CONSTRUCTION.

DESIGN FEATURES RELATING TO CONSTRUCTION
OR TO REGULATION AND CONTROL OF TRAFFIC
MAY BE SUBJECT TO CHANGE AS DEEMED
NECESSARY BY THE DEPARTMENT

SHEET NO.	STATE	ROUTE	PROJECT	
			FEDERAL AID	STATE
6	VA	620	0620-099-176, RW-201	C-501

ADDITIONAL EASEMENTS FOR UTILITY
RELOCATIONS MAY BE REQUIRED
BEYOND THE PROPOSED RIGHT-OF-
WAY SHOWN ON THESE PLANS.



SURVEYED BY: J. B. HARRIS, 07/25/2005
SUPERVISED BY: CHELSEA STALLINGS, 07/25/2005
DESIGNED BY: LEE CAMBERLIN, 07/25/2005
CAD OPERATOR: C:\documents and settings\lee\work\03714\03714.dwg

- Note 1: See General Notes for Erosion & Siltation legend.
- Note 2: Figures in parenthesis and dot-dashed lines denote temporary easements.
- Note 3: Figures in brackets and dot-dashed lines denote permanent easements.
- Note 4: Figures in double brackets and dot-dashed lines denote utility easements.
- Note 5: [C] Denotes Construction Units in Cuts
[E] Denotes Construction Units in Fills
- Note 6: For drainage descriptions see sheets 2D thru 2D31.
- Note 7: All existing pipe and structure are to be used unless otherwise noted.
- Note 8: [V] Denotes 3.048M easement required for Verizon Virginia Inc.
- Note 9: Pavement markings shown on this plan sheet are for schematic purposes only. See sheet [] for typical pavement markings for bicycle lanes.
- Note 10: [X] Denotes demolition of pavement.

