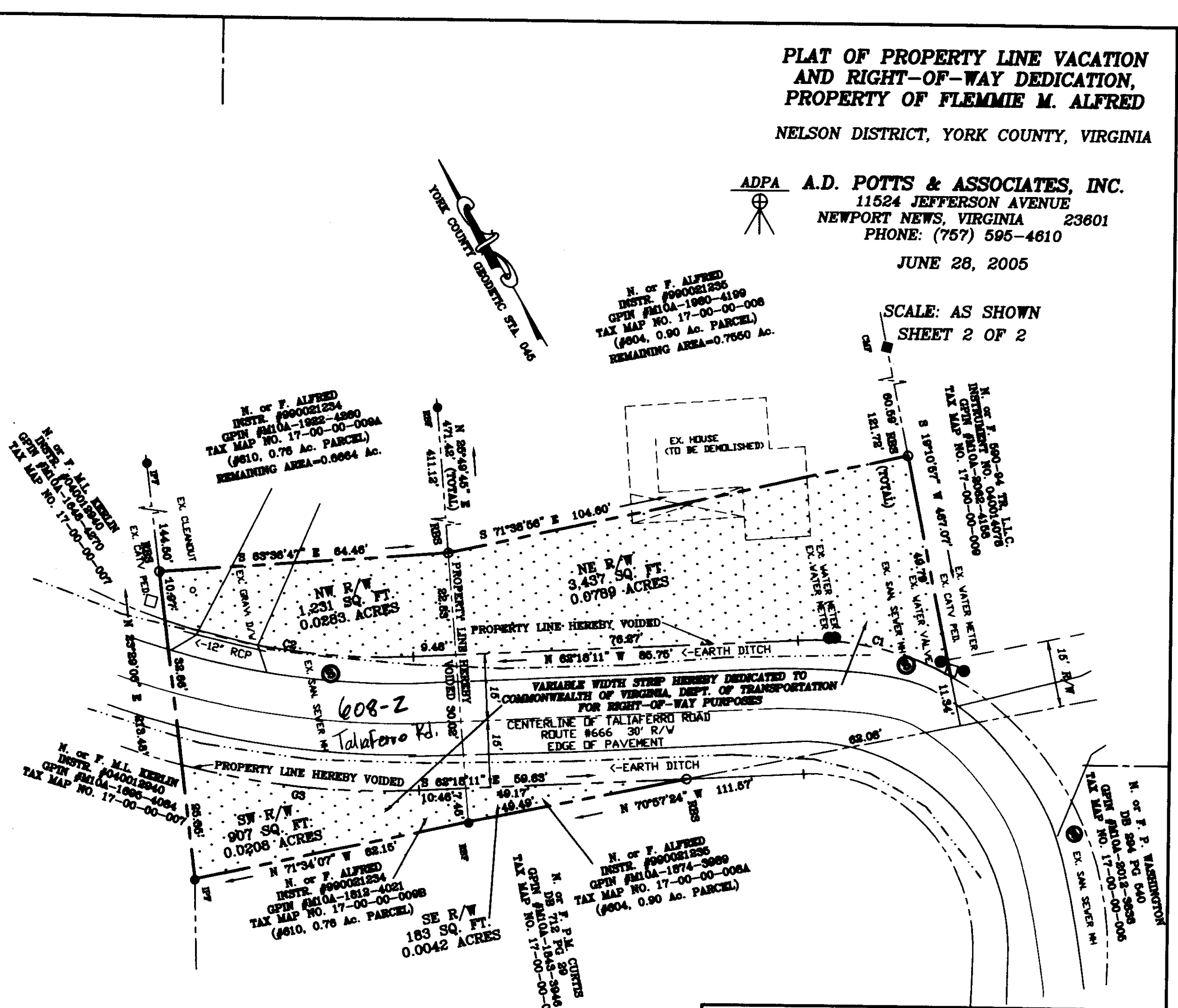
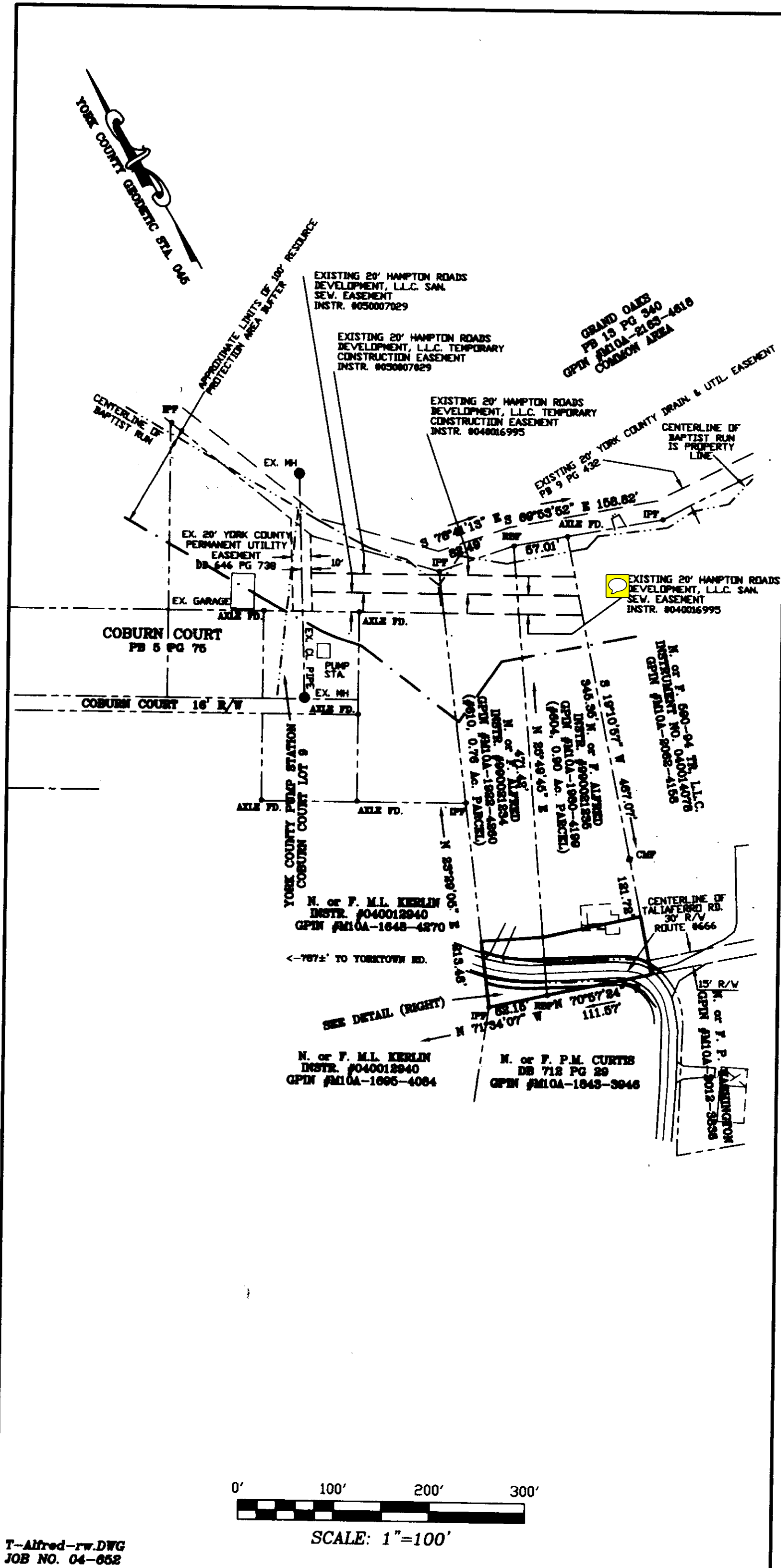


**PLAT OF PROPERTY LINE VACATION  
AND RIGHT-OF-WAY DEDICATION,  
PROPERTY OF FLEMMIE M. ALFRED**  
NELSON DISTRICT, YORK COUNTY, VIRGINIA

ADPA **A.D. POTTS & ASSOCIATES, INC.**  
11524 JEFFERSON AVENUE  
NEWPORT NEWS, VIRGINIA 23601  
PHONE: (757) 595-4610

JUNE 28, 2005

SCALE: AS SHOWN  
SHEET 2 OF 2



CURVE	DELTA ANGLE	RADIUS	ARC LENGTH	CHORD LENGTH	CHORD BEARING
C1	31°25'03"	64.41'	36.38'	34.88'	N 46°35'39" W
C2	21°28'11"	150.00'	56.21'	56.88'	N 61°34'05" W
C3	16°57'30"	180.00'	53.28'	53.08'	S 53°49'26" E

**APPROVED**  
YORK COUNTY BOARD OF SUPERVISORS  
BY: Al Maddalena  
PLAT APPROVING AGENT  
DATE: 3/3/06

STATE OF VIRGINIA  
COUNTY OF YORK  
IN THE CLERK'S OFFICE OF THE CIRCUIT COURT  
FOR THE COUNTY OF YORK-POQUOSON, ON THIS  
DAY 16<sup>th</sup> OF March, 2006, THIS MAP  
WAS PRESENTED AND ADMITTED TO RECORD AS THE  
LAW DIRECTS, IN INSTRUMENT NO. L.R.D. 600594  
TESTE: Lynn S. Jenkins  
CLERK  
BY: Michael M. Chimmich  
DEPUTY CLERK

