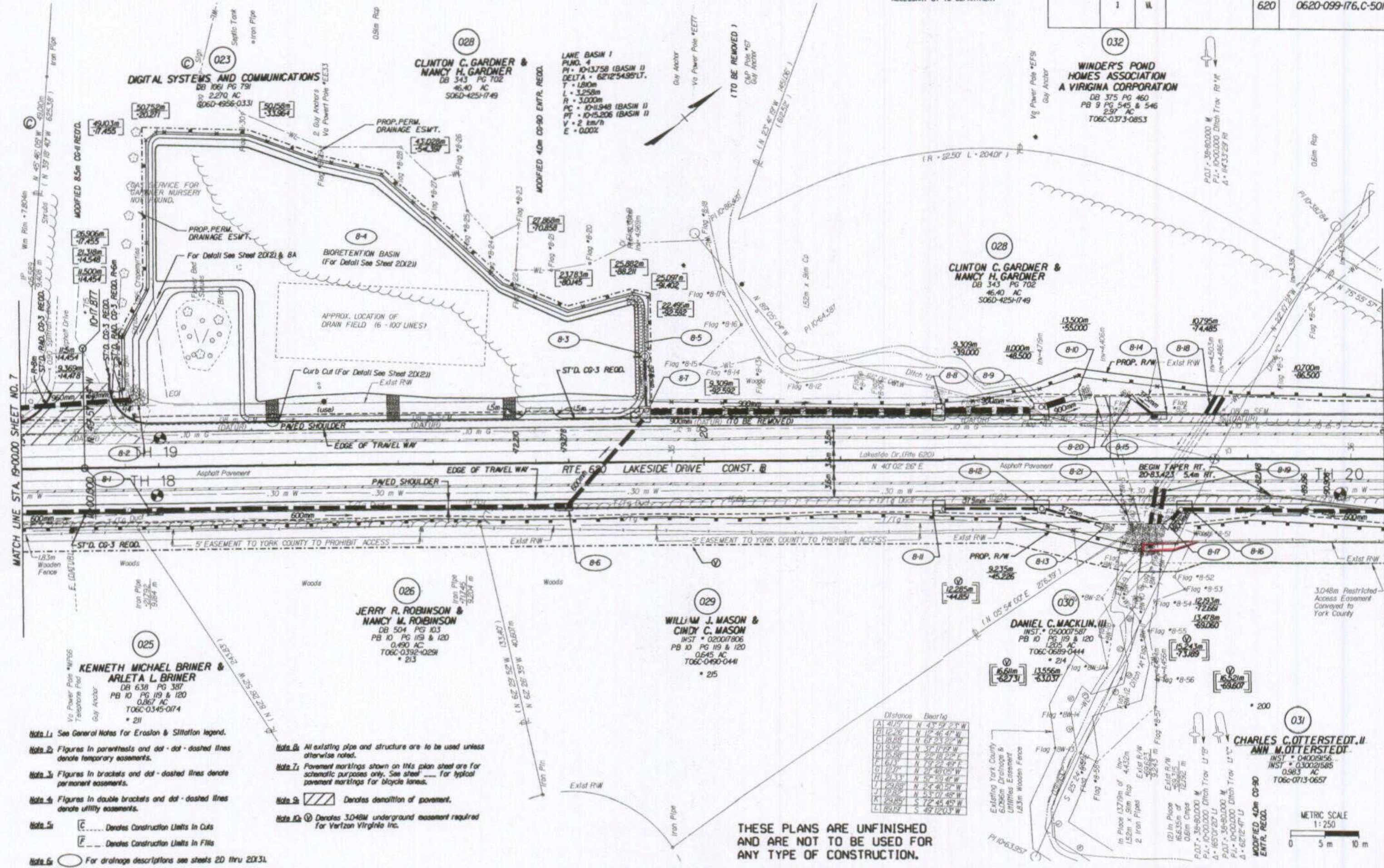


HAMPTON ROADS DISTRICT DESIGN UNIT

DESIGN FEATURE RELATING TO CONSTRUCTION OR TO REGULATION AND CONTROL OF TRAFFIC MAY BE SUBJECT TO CHANGE AS DEEMED NECESSARY BY THE DEPARTMENT

REVISED	FHWA REGION	STATE	FEDERAL AID PROJECT	ROUTE	STATE PROJECT	SHEET NO.
05-11-05	1	VA		620	0620-099-176.C-501	8



SURVEYED BY: G.B. HARRIS 03/18/05 2857  
 SUPERVISED BY: J. S. HALL 03/18/05 3436  
 DESIGNED BY: G.E. COOPER 03/20/05 179262-500  
 CAD OPERATOR: ...  
 REVISIONS BY: ...

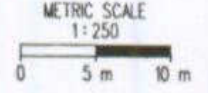
MATCH LINE STA. 19+00.00 SHEET NO. 7

MATCH LINE STA. 21+00.00 SHEET NO. 9

- Note 1: See General Notes for Erosion & Siltation legend.
- Note 2: Figures in parenthesis and dot-dot-dashed lines denote temporary easements.
- Note 3: Figures in brackets and dot-dashed lines denote permanent easements.
- Note 4: Figures in double brackets and dot-dashed lines denote utility easements.
- Note 5: [C] Denotes Construction Limits in Cuts  
[F] Denotes Construction Limits in Fills
- Note 6: [O] For drainage descriptions see sheets 2D thru 2D31.
- Note 7: All existing pipe and structure are to be used unless otherwise noted.
- Note 8: Pavement markings shown on this plan sheet are for schematic purposes only. See sheet [ ] for typical pavement markings for bicycle lanes.
- Note 9: [Hatched] Denotes demolition of pavement.
- Note 10: [Symbol] Denotes 3.048M underground easement required for Verizon Virginia Inc.

Distance	Bearing
A 41.75'	N 43° 52' 22" W
B 12.26'	N 12° 46' 47" W
C 18.88'	N 67° 23' 22" W
D 9.35'	N 37° 17' 52" W
E 15.30'	N 20° 18' 28" E
F 6.17'	N 72° 22' 49" E
G 12.70'	N 25° 40' 05" W
H 25.33'	N 54° 19' 41" W
I 12.88'	N 53° 10' 52" W
J 24.85'	S 72° 45' 45" W
K 24.85'	S 49° 12' 03" W

THESE PLANS ARE UNFINISHED AND ARE NOT TO BE USED FOR ANY TYPE OF CONSTRUCTION.



State Highway Plat Book No. 9 Page 220  
 doc # LRO60006639