

THESE PLANS ARE UNFINISHED AND ARE NOT TO BE USED FOR ANY TYPE OF CONSTRUCTION.

DESIGN FEATURES RELATING TO CONSTRUCTION OR TO REGULATION AND CONTROL OF TRAFFIC MAY BE SUBJECT TO CHANGE AS DEEMED NECESSARY BY THE DEPARTMENT.

8/8/05	1/18/06	REGION	PROJECT	ROUTE	PROJECT
3	VA.			620	0620-099-176, C-501

BEG. PROJ. 0620-099-176, C-501
STA. 11+497.2

FRANCES MARIE SUTTLE
DB 397 PG 609
PB 9 PG 306
EXIST. R/W 10.554 m
EXIST. R/W 13.654 m
S05B-2884-453
• 4528

PAUL WAYNE JONES & WILEY EVERETT HATTON JR.
DB 1085 PG 465
PB 6 PG 9
S05B-3098-3973

DONNA CARRIER-TAL
INSTR. # 040006418
PB 6 PG 9
266 AC
S05B-3242-4113
• 102

KENNETH W. LOCK & ANN E. LOCK
DB 275 PG 593
PB 6 PG 9
299 AC
S05B-3268-4022

PAUL B. KIRBY & KATHRYN C. KIRBY
DB 444 PG 633
PB 9 PG 511
774 AC
S05B-3381-4136

EDWARD E. IROSSLAND & LELA E. IROSSLAND
DB 382 PG 272
PB 9 PG 511
0.50 AC
S05B-314-4170

MATCH LINE STA. 11+000.00 SHEET NO. 3

GEORGE L. SMITH JR.
INST. # 0000005366
DB 94 PG 198
1535 AC
S05B-3003-3737

HERITAGE INTERNATIONAL CENTER, LLC.
INST. # 040021297
PB 9 PG 251
0.477 ac
S05B-3298-3835

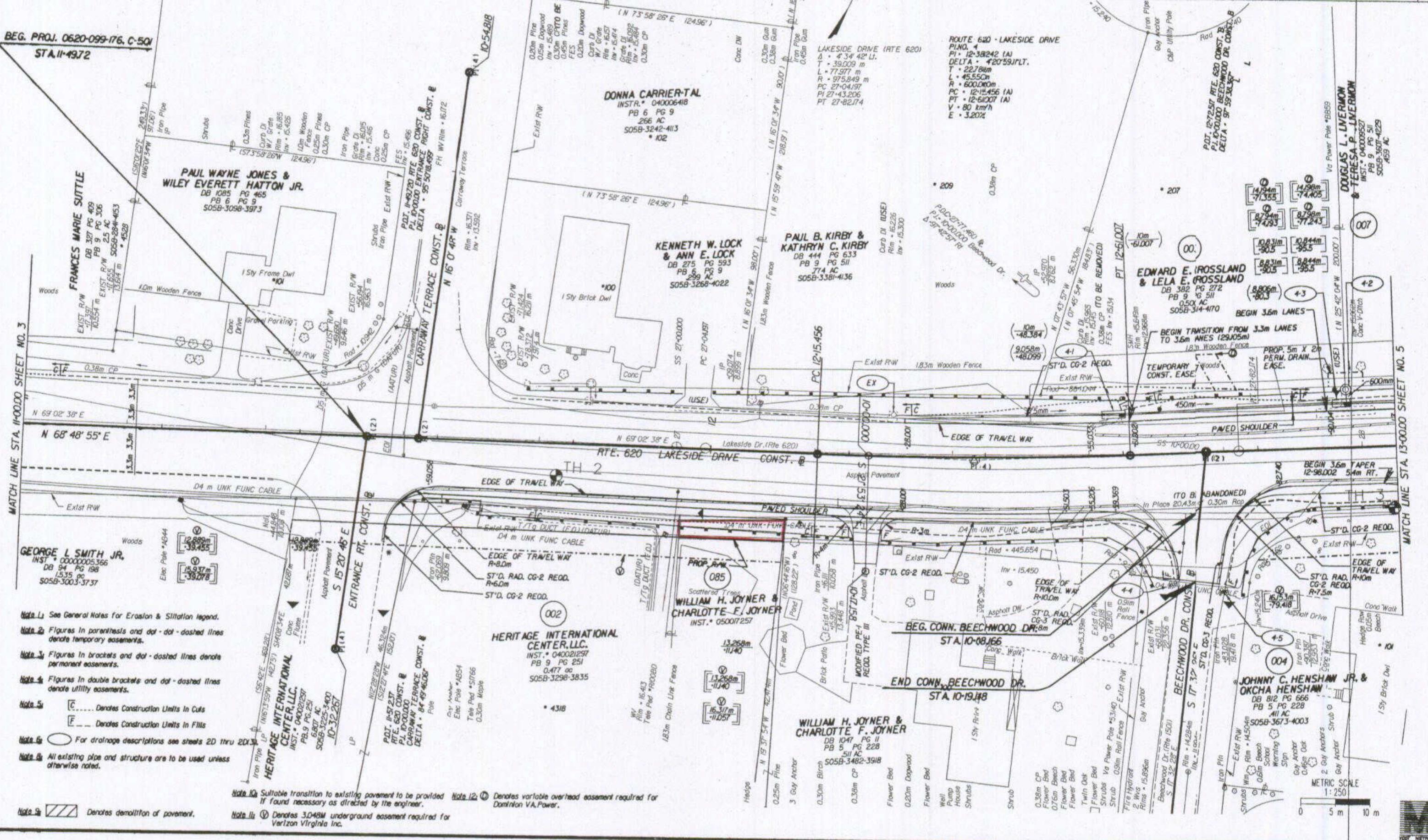
WILLIAM H. JOYNER & CHARLOTTE F. JOYNER
INST. # 050017257

WILLIAM H. JOYNER & CHARLOTTE F. JOYNER
DB 1047 PG 11
PB 5 PG 228
511 AC
S05B-3482-3918

JOHNNY C. HENSHAW JR. & OKCHA HENSHAW
DB 812 PG 666
PB 5 PG 228
All AC
S05B-3673-4003

- Note 1: See General Notes for Erosion & Siltation Legend.
- Note 2: Figures in parenthesis and dot-dash-dashed lines denote temporary easements.
- Note 3: Figures in brackets and dot-dashed lines denote permanent easements.
- Note 4: Figures in double brackets and dot-dashed lines denote utility easements.
- Note 5: [C] Denotes Construction Units in Cuts
[F] Denotes Construction Units in Fills
- Note 6: [Symbol] For drainage descriptions see sheets 2D thru 2D13
- Note 7: All existing pipe and structure are to be used unless otherwise noted.

- Note 10: Suitable transition to existing pavement to be provided if found necessary as directed by the engineer.
- Note 11: [Symbol] Denotes 3.048M underground easement required for Verizon Virginia Inc.
- Note 12: [Symbol] Denotes variable overhead easement required for Dominion VA Power.



ROUTE 620 - LAKESIDE DRIVE
P.L.O. # 12-38242 (A)
P.L. # 20591PLT.
DELTA # 420591PLT.
T = 22.78m
L = 45.550m
R = 600.000m
PC = 12+11.456 (A)
PT = 12+61.007 (A)
V = 80 km/h
E = 3.20%

