

BOUNDARY LINE ADJUSTMENT
 BETWEEN THE PROPERTIES OF TRUSTEES OF
YORKMINSTER PRESBYTERIAN CHURCH

NELSON DISTRICT - YORK COUNTY, VIRGINIA

SEPTEMBER 16, 2005

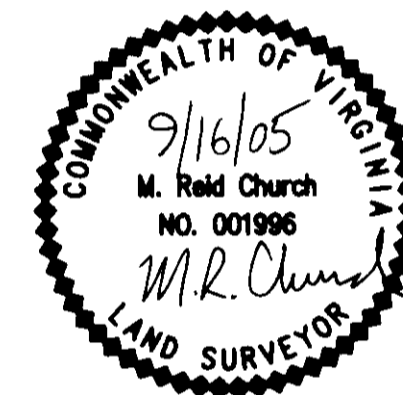
SHEET 2 OF 2

Simmons Newsome, P.C.

Surveyors Planners
 110A Dare Road
 Yorktown, Virginia 23692
 Phone (757) 898-4914 Fax (757) 898-4914



1" = 100'



LEGEND

- Iron Pipe/Rod Set (IPS) (IRS)
- Concrete Monument Set (CMS)
- Iron Pipe/Rod Found (IPF) (IRF)
- Concrete Monument Found (CMF)

APPROVED:
 YORK COUNTY BOARD OF SUPERVISORS

BY: Al Maddalena
 Plat Approving Agent

DATE: 4/5/06

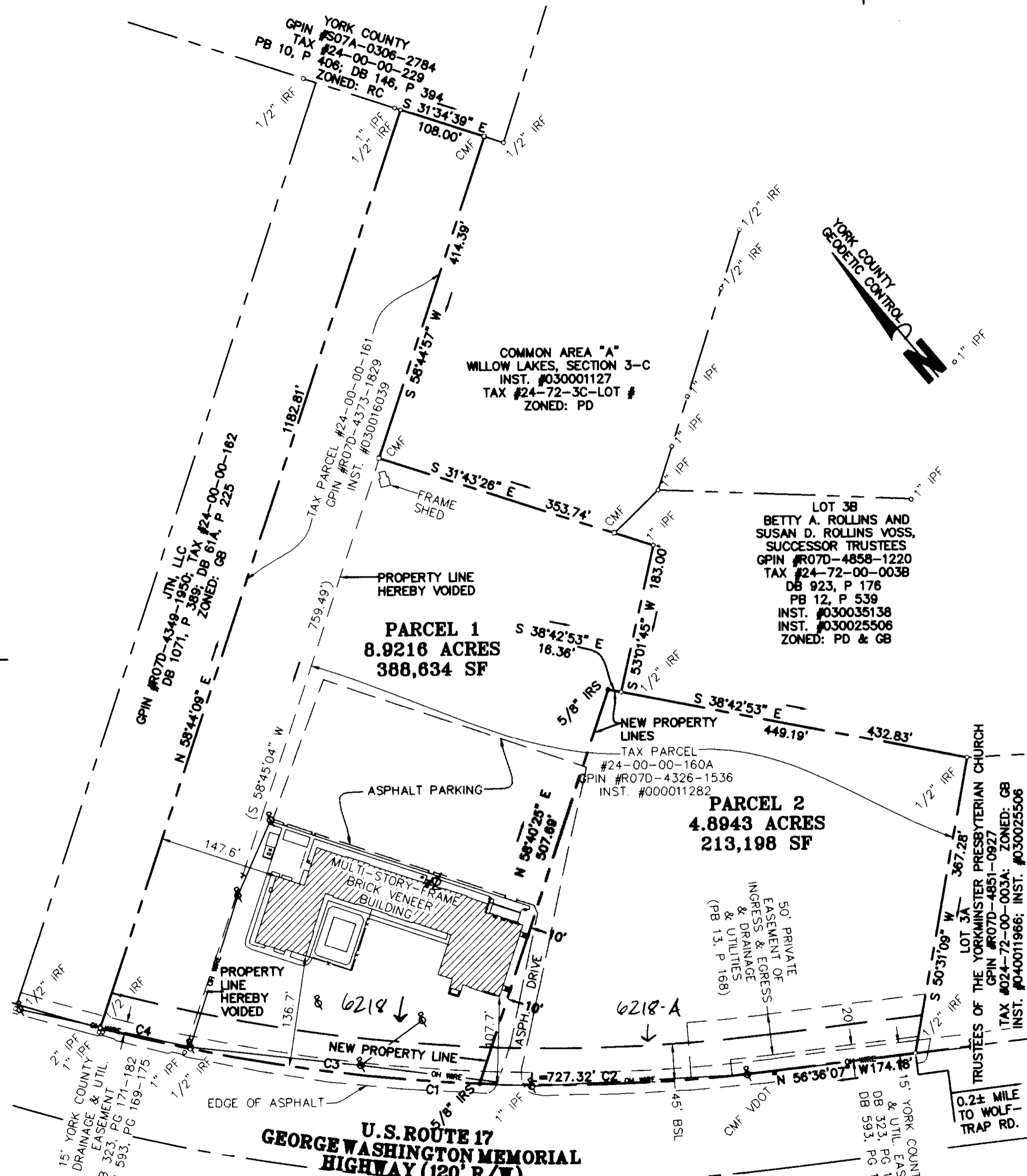
STATE OF VIRGINIA
 COUNTY OF YORK

In the Clerk's Office of the Circuit Court for the
 County of York-Poquoson the 14th day of April, 2006 this
 map was presented and admitted to record as
 the law directs in Instrument # 060008250 12:12 pm

TESTE: LYNN S. JENKINS, CLERK

BY: Simmons Newsome P.C.
 Clerk

02-11-2680
 VACATION PLAT.DWG



CURVE TABLE						
CURVE	LENGTH	RADIUS	DELTA	TANGENT	CHORD	CHORD BEARING
C1	835.48'	2206.83'	21°41'30"	422.80'	830.50'	S45°45'23"E
C2	363.59'	2206.83'	9°26'23"	182.21'	363.17'	S51°52'56"E
C3	363.73'	2206.83'	9°28'37"	182.26'	363.32'	S42°26'26"E
C4	108.16'	2206.83'	2°48'29"	54.09'	108.15'	S36°18'53"E

NOTE:
 THIS PLAT IS BASED ON A FIELD SURVEY PERFORMED IN NOVEMBER,
 2002. THIS PLAT DOES NOT REFLECT A CURRENT BOUNDARY SURVEY.
 THIS PLAT DOES NOT REFLECT A CURRENT PHYSICAL IMPROVEMENTS
 SURVEY.