

NOTE:  
PROPERTY LINES AS SHOWN ON THIS SHEET ARE BASED ON RECORD AND OTHER AVAILABLE INFORMATION AND DOES NOT REPRESENT AN ACTUAL FIELD SURVEY. THIS PLAT WAS PREPARED WITHOUT THE BENEFIT OF A CURRENT TITLE REPORT, THERE MAY BE EASEMENTS, RESTRICTIONS & COVENANTS OTHER THAN SHOWN THAT MAY AFFECT THIS PROPERTY. THIS PLAT IS INTENDED FOR EASEMENT PURPOSES ONLY.

EASEMENT AREA TABLE	
20' YORK COUNTY UTILITY EASEMENT	= 86,955 S.F. OR 1.996 AC.
20' TEMPORARY YORK COUNTY CONSTRUCTION EASEMENT	= 94,951 S.F. OR 2.180 AC

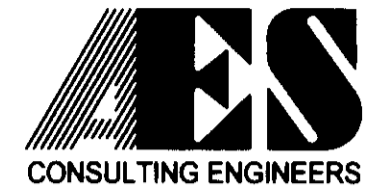
NOTE:  
THIS SHEET ADDRESSES OFFSITE UTILITY EASEMENTS ONLY.

N/F  
LANDMARK RESORT  
PROPERTIES OF VA, LLC  
INSTR. #050031147  
PARCEL "D"  
P.B. 8, PG. 418  
T.M. 15-02-00-0000  
GPIN 112C-0023-1654

N/F  
WILLIAMSBURG  
COUNTRY CLUB, INC.  
D.B. 315, PG. 161  
P.B. 9, PG. 244  
P.B. 9, PG. 571  
T.M. 15-00-00-004A  
GPIN H12B-3671-2710  
152.85 ACRES±  
ZONED: RC

PLAT SHOWING BOUNDARY LINE ADJUSTMENT  
BETWEEN THE PROPERTIES OF  
LANDMARK RESORT PROPERTIES OF VA, LLC  
AND WILLIAMSBURG COUNTRY CLUB, INC

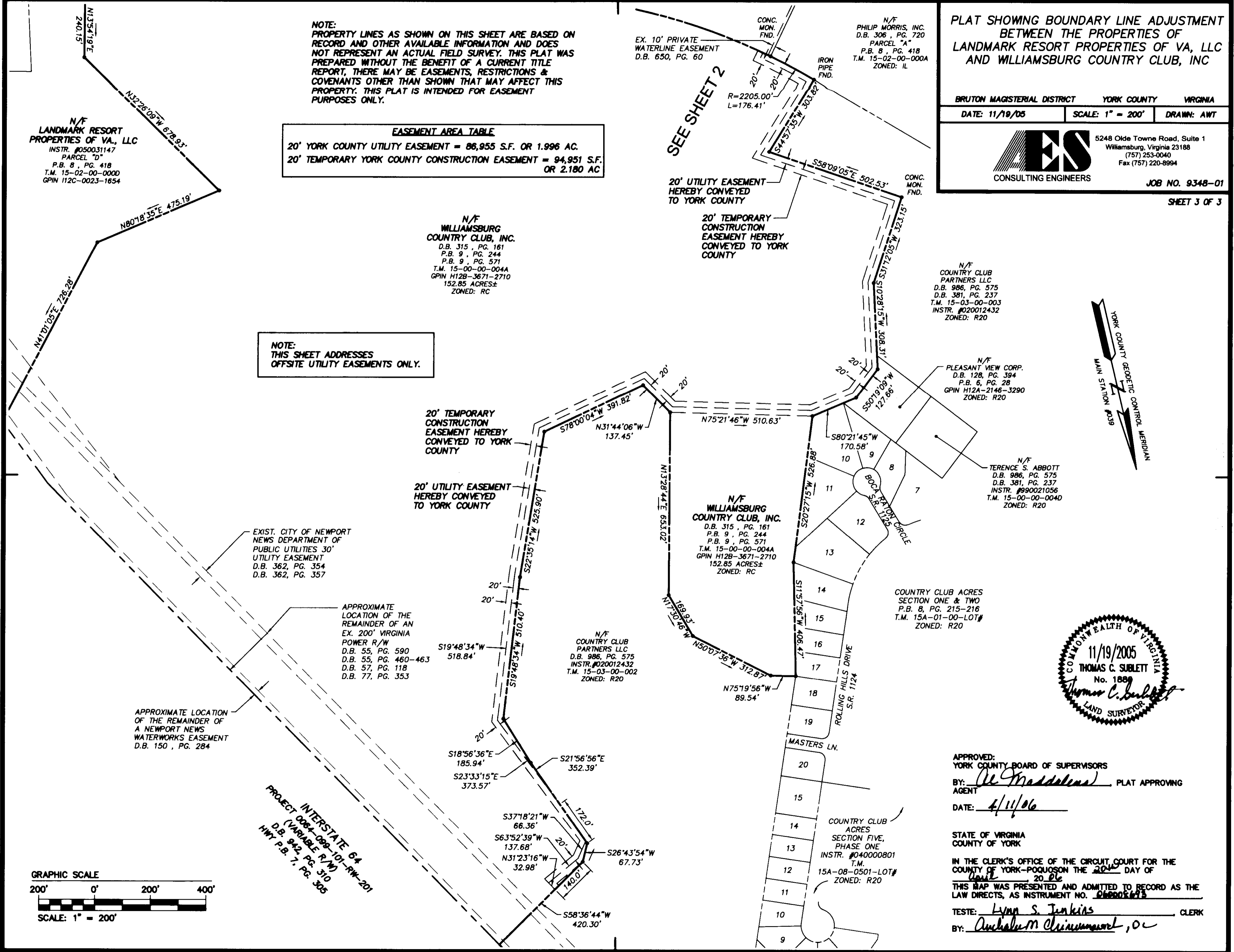
BRUTON MAGISTERIAL DISTRICT YORK COUNTY VIRGINIA  
DATE: 11/19/05 SCALE: 1" = 200' DRAWN: AWT



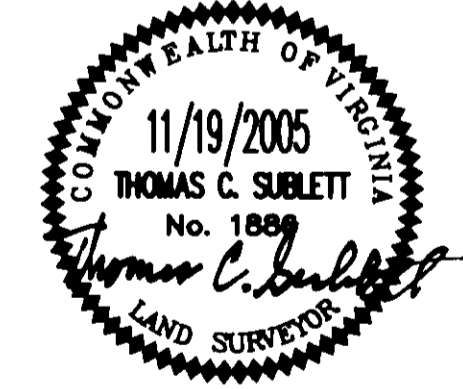
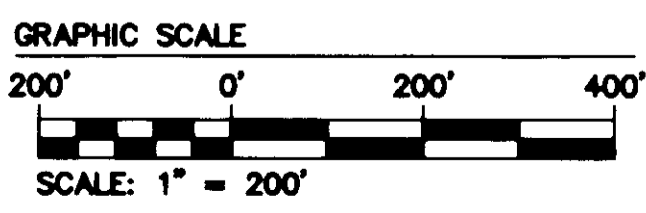
5248 Olde Towne Road, Suite 1  
Williamsburg, Virginia 23188  
(757) 253-0040  
Fax (757) 220-8994

JOB NO. 9348-01

SHEET 3 OF 3



INTERSTATE 64  
(VARIABLE R/W)  
D.B. 942, PG. 310  
HWY P.B. 7, PG. 305



APPROVED:  
YORK COUNTY BOARD OF SUPERVISORS  
BY: Al Maddalena PLAT APPROVING AGENT  
DATE: 4/11/06

STATE OF VIRGINIA  
COUNTY OF YORK  
IN THE CLERK'S OFFICE OF THE CIRCUIT COURT FOR THE COUNTY OF YORK-POQUOSON THE 20th DAY OF April 2006  
THIS MAP WAS PRESENTED AND ADMITTED TO RECORD AS THE LAW DIRECTS, AS INSTRUMENT NO. 06005693  
TESTE: Lynn S. Jenkins CLERK  
BY: Archibald M. Christman, Jr.