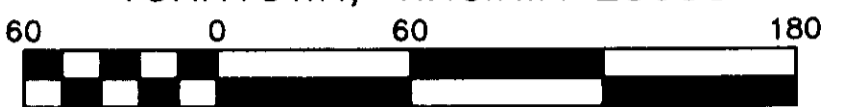


SUBDIVISION PLAT OF VICTORY ESTATES

BETHEL MAGISTERIAL DISTRICT
COUNTY OF YORK, VIRGINIA
SCALE: 1" = 60' DATE: 17 SEPTEMBER 2005
DAVIS & ASSOCIATES, P.C.
SURVEYORS - PLANNERS
3630 GEORGE WASHINGTON
MEMORIAL HIGHWAY - SUITE "G"
YORKTOWN, VIRGINIA 23693



Scale 1" = 60 ft
SHEET 2 OF 5



- SYMBOLS -

- 30' DENOTES MINIMUM BUILDING SETBACK LINE
- DENOTES IRON PIPE FOUND
- DENOTES IRON PIPES TO BE SET AT ALL PROPERTY LINE JUNCTURES
- DENOTES CONCRETE MONUMENT FOUND
- DENOTES CONCRETE MONUMENT TO BE SET

APPROVED

YORK COUNTY BOARD OF SUPERVISORS

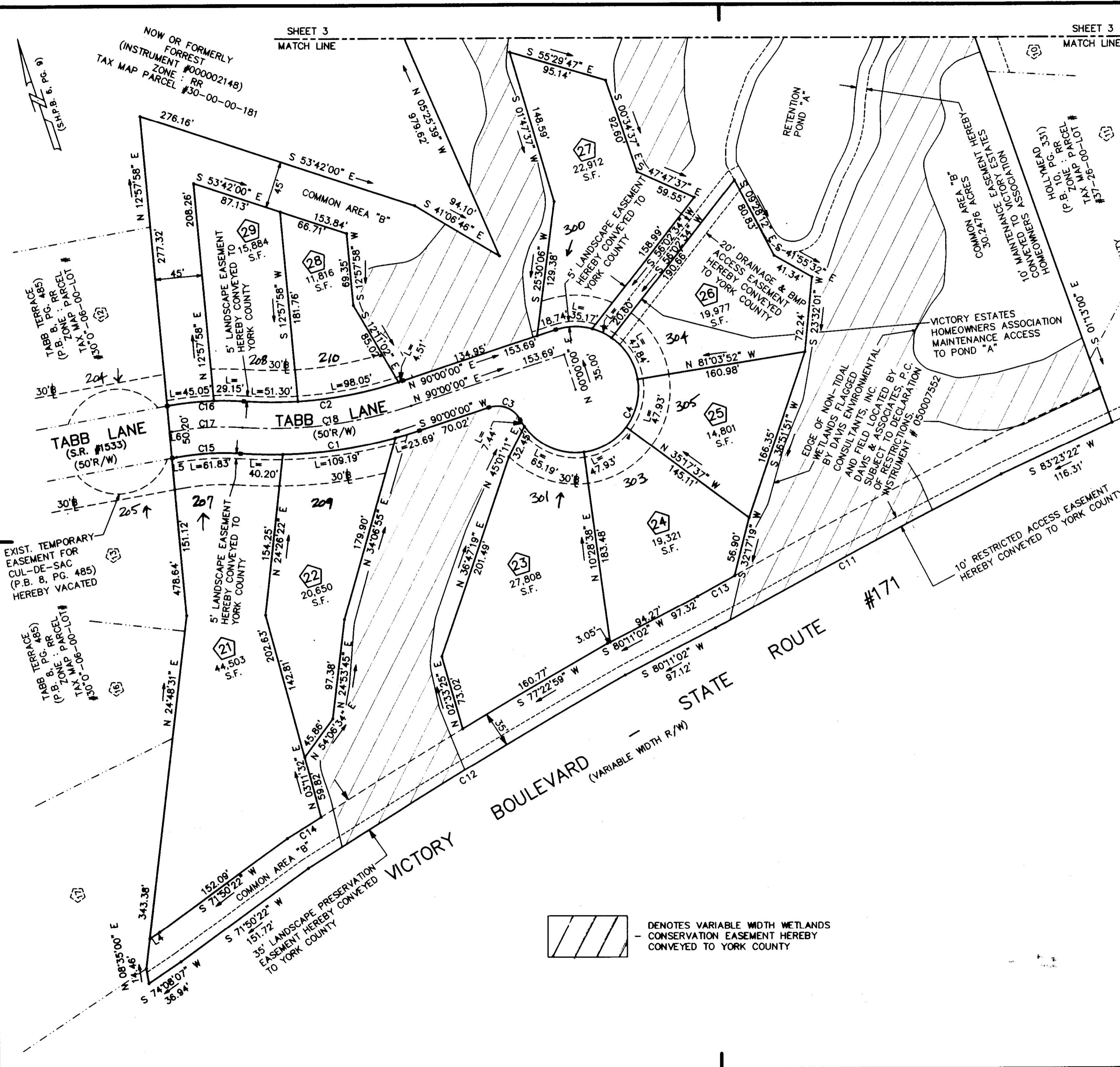
BY: Al Maddalena
PLAT APPROVING AGENT

DATE: 4/4/06

STATE OF VIRGINIA
COUNTY OF YORK
IN THE CLERK'S OFFICE OF THE CIRCUIT
COURT FOR THE COUNTY OF YORK-POQUOSON
THE 21ST DAY OF April 2006, THIS MAP WAS
PRESENTED AND ADMITTED TO RECORD AS
THE LAW DIRECTS AS INSTRUMENT # 06000850
12:00 pm

TESTE: LYNN S. JENKINS, CLERK
CLERK

BY: Rachel Ruskell



DENOTES VARIABLE WIDTH WETLANDS CONSERVATION EASEMENT HEREBY CONVEYED TO YORK COUNTY