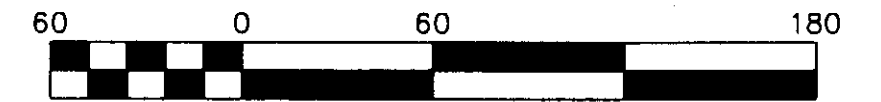


SUBDIVISION PLAT OF
**FALCON CREST
 SECTION II**

NELSON MAGISTERIAL DISTRICT
 COUNTY OF YORK, VIRGINIA
 SCALE: 1" = 60' DATE: 13 OCTOBER 2005

DAVIS & ASSOCIATES, P.C.
 SURVEYORS - PLANNERS
 3630 GEORGE WASHINGTON
 MEMORIAL HIGHWAY - SUITE "G"
 YORKTOWN, VIRGINIA 23693



Scale 1" = 60 ft

SHEET 2 OF 2

- SYMBOLS -

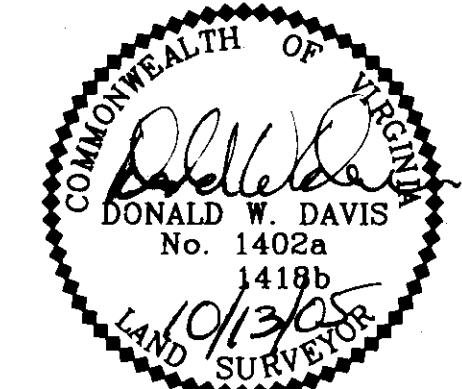
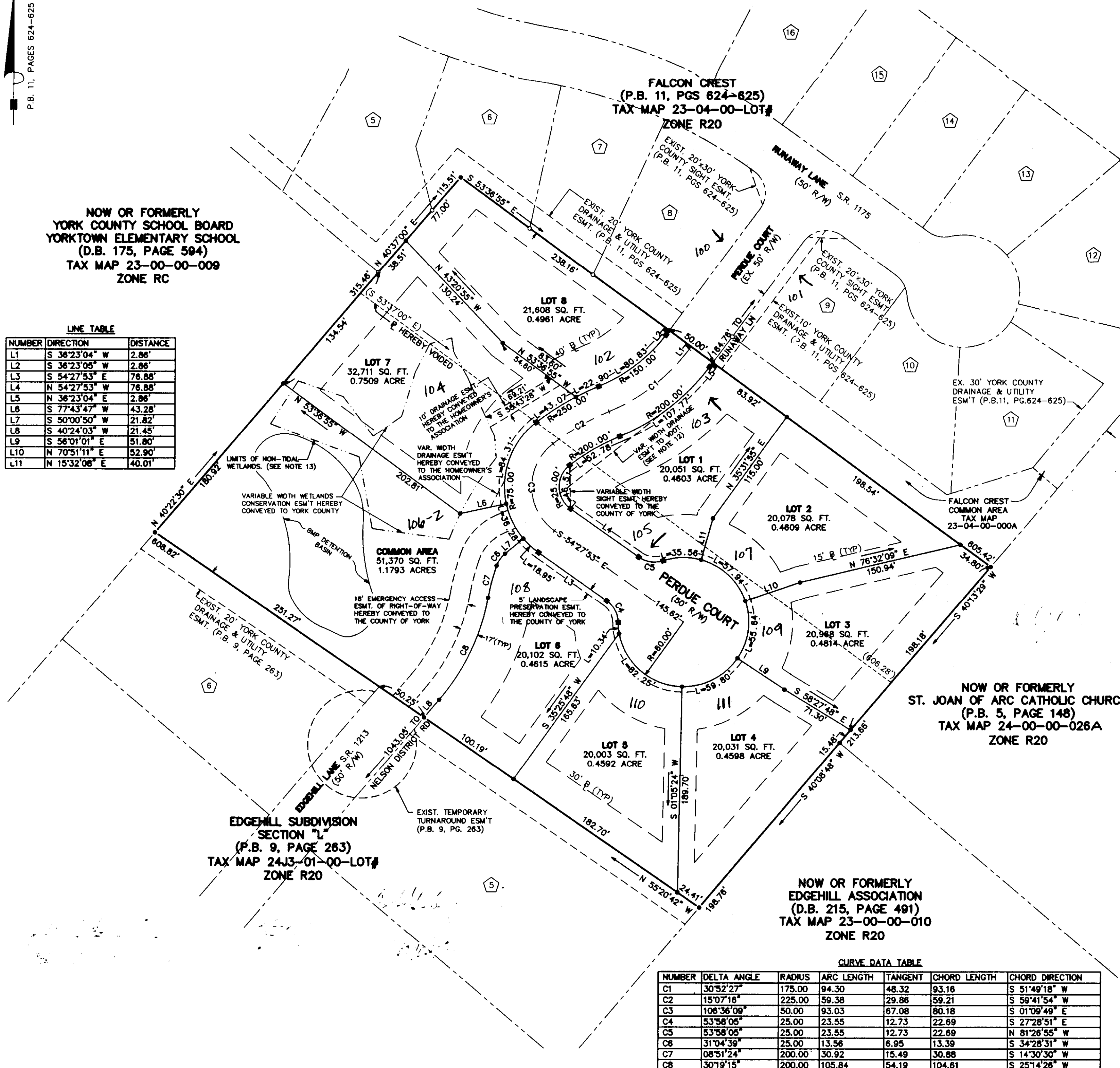
- DENOTES MINIMUM BUILDING SETBACK LINE
- DENOTES IRON ROD FOUND
- DENOTES IRON PIPE FOUND
- DENOTES IRON RODS TO BE SET AT ALL PROPERTY LINE JUNCTURES
- DENOTES CONCRETE MONUMENT FOUND
- DENOTES CONCRETE MONUMENT TO BE SET

P.B. 11, PAGES 624-625

NOW OR FORMERLY
 YORK COUNTY SCHOOL BOARD
 YORKTOWN ELEMENTARY SCHOOL
 (D.B. 175, PAGE 594)
 TAX MAP 23-00-00-009
 ZONE RC

LINE TABLE

NUMBER	DIRECTION	DISTANCE
L1	S 36°23'04" W	2.86'
L2	S 36°23'05" W	2.86'
L3	S 54°27'53" E	76.88'
L4	N 54°27'53" W	76.88'
L5	N 36°23'04" E	2.86'
L6	S 77°43'47" W	43.28'
L7	S 50°00'50" W	21.82'
L8	S 40°24'03" W	21.45'
L9	S 56°01'01" E	51.80'
L10	N 70°51'11" E	52.90'
L11	N 15°32'08" E	40.01'



NOW OR FORMERLY
 ST. JOAN OF ARC CATHOLIC CHURCH
 (P.B. 5, PAGE 148)
 TAX MAP 24-00-00-026A
 ZONE R20

EDGEHILL SUBDIVISION
 SECTION 1
 (P.B. 9, PAGE 263)
 TAX MAP 24J3-01-00-LOT#
 ZONE R20

NOW OR FORMERLY
 EDGEHILL ASSOCIATION
 (D.B. 215, PAGE 491)
 TAX MAP 23-00-00-010
 ZONE R20

CURVE DATA TABLE

NUMBER	DELTA ANGLE	RADIUS	ARC LENGTH	TANGENT	CHORD LENGTH	CHORD DIRECTION
C1	30°52'27"	175.00	94.30	48.32	93.16	S 51°49'18" W
C2	15°07'16"	225.00	59.38	29.86	59.21	S 59°41'54" W
C3	106°36'09"	50.00	93.03	67.08	80.18	S 01°09'49" E
C4	53°58'05"	25.00	23.55	12.73	22.69	S 27°28'51" E
C5	53°58'05"	25.00	23.55	12.73	22.69	N 81°26'55" W
C6	31°04'39"	25.00	13.56	6.95	13.39	S 34°28'31" W
C7	08°51'24"	200.00	30.92	15.49	30.88	S 14°30'30" W
C8	30°19'15"	200.00	105.84	54.19	104.61	S 25°14'26" W

APPROVED

YORK COUNTY BOARD OF SUPERVISORS

BY: Al Maddalena
 PLAT APPROVING AGENT

DATE: 4/24/06

STATE OF VIRGINIA
 COUNTY OF YORK
 IN THE CLERK'S OFFICE OF THE CIRCUIT
 COURT FOR THE COUNTY OF YORK-POQUOSON
 THE 26th DAY OF April 2006, THIS MAP WAS
 PRESENTED AND ADMITTED TO RECORD AS
 THE LAW DIRECTS AS INSTRUMENT # 06009396

TESTE: W. S. JENKINS, CLERK 12:49pm

BY: Rachel Reiskel
 CLERK