

SUPERVISED BY: BOB RAMON (757) 253-5037
DESIGNED BY: M.D. WINSTEAD (757) 925-2556
HAMPTON ROADS DISTRICT DESIGN UNIT

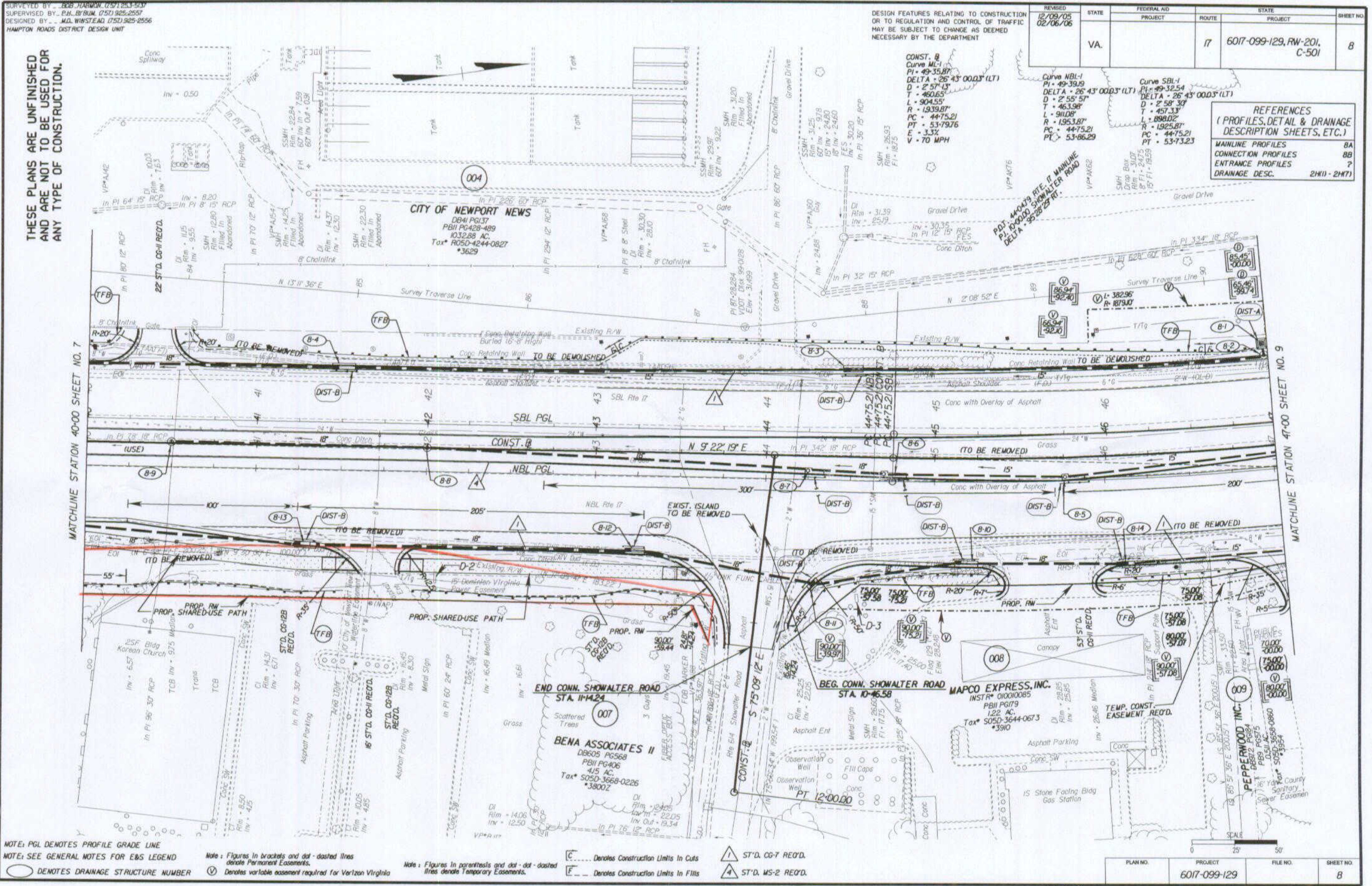
THESE PLANS ARE UNFINISHED
AND ARE NOT TO BE USED FOR
ANY TYPE OF CONSTRUCTION.

DESIGN FEATURES RELATING TO CONSTRUCTION
OR TO REGULATION AND CONTROL OF TRAFFIC
MAY BE SUBJECT TO CHANGE AS DEEMED
NECESSARY BY THE DEPARTMENT

REVISION	STATE	FEDERAL AID	ROUTE	STATE	PROJECT	SHEET NO.
12/09/05 02/06/06	VA.		17		6017-099-129, RW-201, C-501	8

REFERENCES
(PROFILES, DETAIL & DRAINAGE
DESCRIPTION SHEETS, ETC.)

MAINLINE PROFILES	8A
CONNECTION PROFILES	8B
ENTRANCE PROFILES	?
DRAINAGE DESC.	2(H1) - 2(H7)



NOTE: PGL DENOTES PROFILE GRADE LINE
NOTE: SEE GENERAL NOTES FOR E&S LEGEND
○ DENOTES DRAINAGE STRUCTURE NUMBER

Note: Figures in brackets and dot-dashed lines denote Permanent Easements.
Note: Figures in parenthesis and dot-dot-dashed lines denote Temporary Easements.

--- Denotes Construction Limits In Cuts
--- Denotes Construction Limits In Fills

△ ST'D. CG-7 REO'D.
▲ ST'D. WS-2 REO'D.

PLAN NO. 6017-099-129 PROJECT FILE NO. SHEET NO. 8