

BOUNDARY LINE ADJUSTMENT BETWEEN
THE PROPERTIES OF

64 ENTERPRISES, LLP
A VIRGINIA PARTNERSHIP

AND

FORD'S COLONY COUNTRY CLUB, INC.

BRUTON MAGISTERIAL DISTRICT

COUNTY OF YORK, VIRGINIA

SCALE : 1" = 100' DATE : 18 OCTOBER 2004

DAVIS & ASSOCIATES, P.C.

SURVEYORS - PLANNERS

3630 GEORGE WASHINGTON

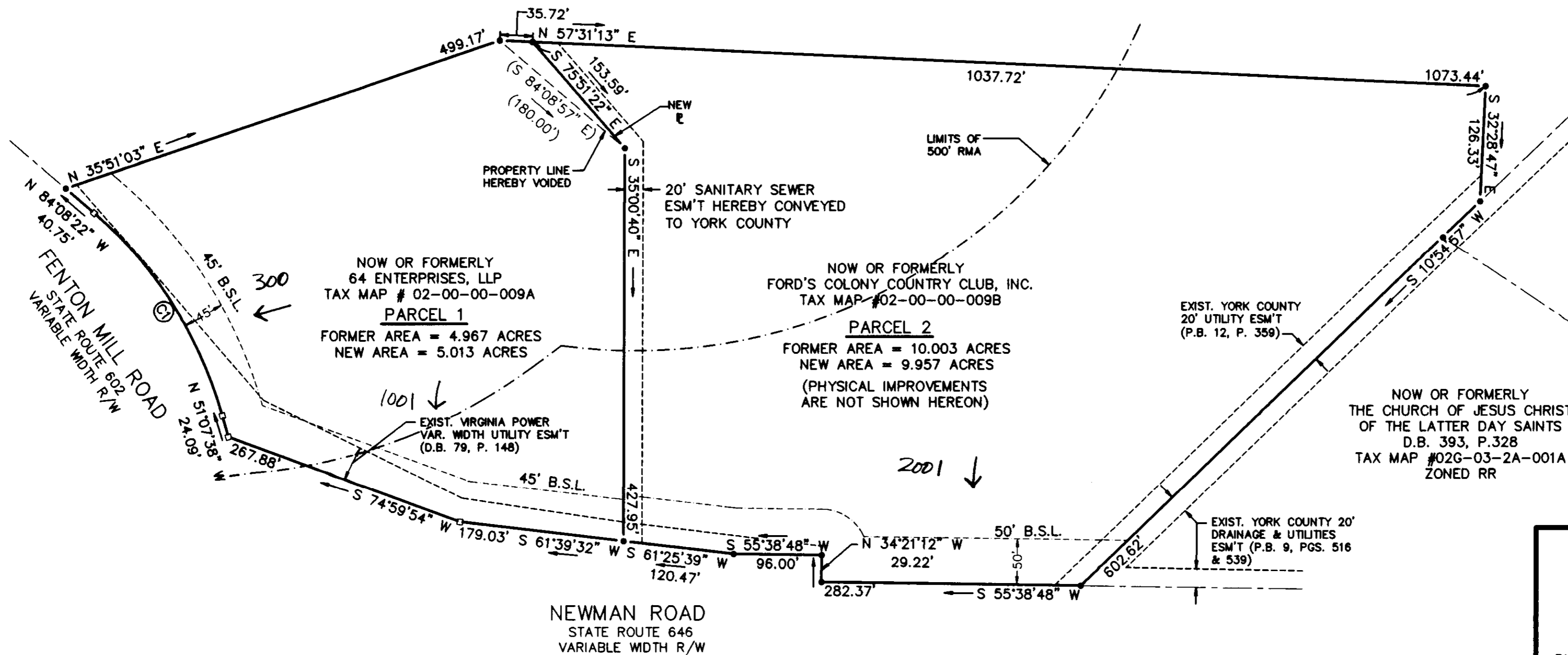
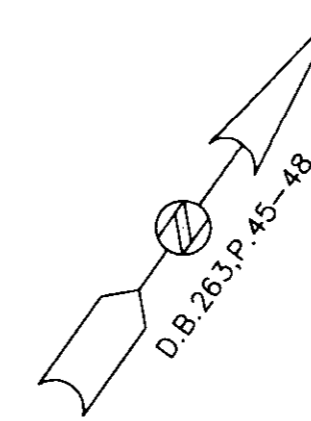
MEMORIAL HIGHWAY-SUITE "G"

YORKTOWN, VIRGINIA 23693

SHEET 2 OF 2

0 50 100 200
SCALE 1"=100'

NOW OR FORMERLY
THE R.A. LAWSON CORP.
INSTR. NO. 040014595
TAX MAP # 02-00-00-009
ZONED RR



NOW OR FORMERLY
ANTHONY GREGORY
D.B. 1050, P. 143
LOT 2
PLAT OF RESUBDIVISION OF
LOTS 1 & 2
BANBURY CROSS, SECTION 2A
P.B. 10, P.131
TAX MAP # 02G-03-2A-002
ZONED RR

NOW OR FORMERLY
THE CHURCH OF JESUS CHRIST
OF THE LATTER DAY SAINTS
D.B. 393, P.328
TAX MAP #02G-03-2A-001A
ZONED RR

APPROVED

YORK COUNTY BOARD OF SUPERVISORS

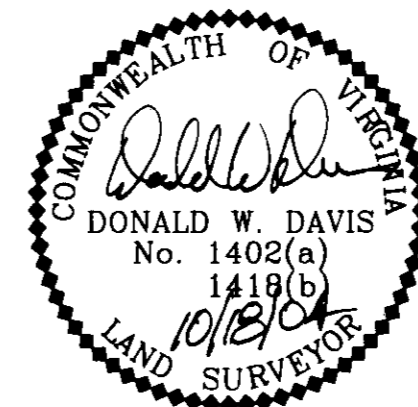
BY: *De Maddalena*
PLAT APPROVING AGENT

DATE: 6/29/06

CURVE DATA TABLE

NUMBER	DELTA ANGLE	RADIUS	ARC LENGTH	TANGENT	CHORD LENGTH	CHORD DIRECTION
C1	33°00'41"	459.26'	264.61'	136.09'	260.97'	N 67°38'00" W

TOTAL AREA OF BOUNDARY LINE ADJUSTMENT = 14.970 ACRES



STATE OF VIRGINIA
COUNTY OF YORK
IN THE CLERK'S OFFICE OF THE YORK-POQUOSON
CIRCUIT COURT THIS 7th DAY OF July
2006. THIS MAP WAS PRESENTED AND ADMITTED
TO RECORD AS THE LAW DIRECTS IN INSTRUMENT
NO. 040015493 11:52 am

TESTE: Lynn S. Jenkins
CLERK

BY: Rachel Rieschel