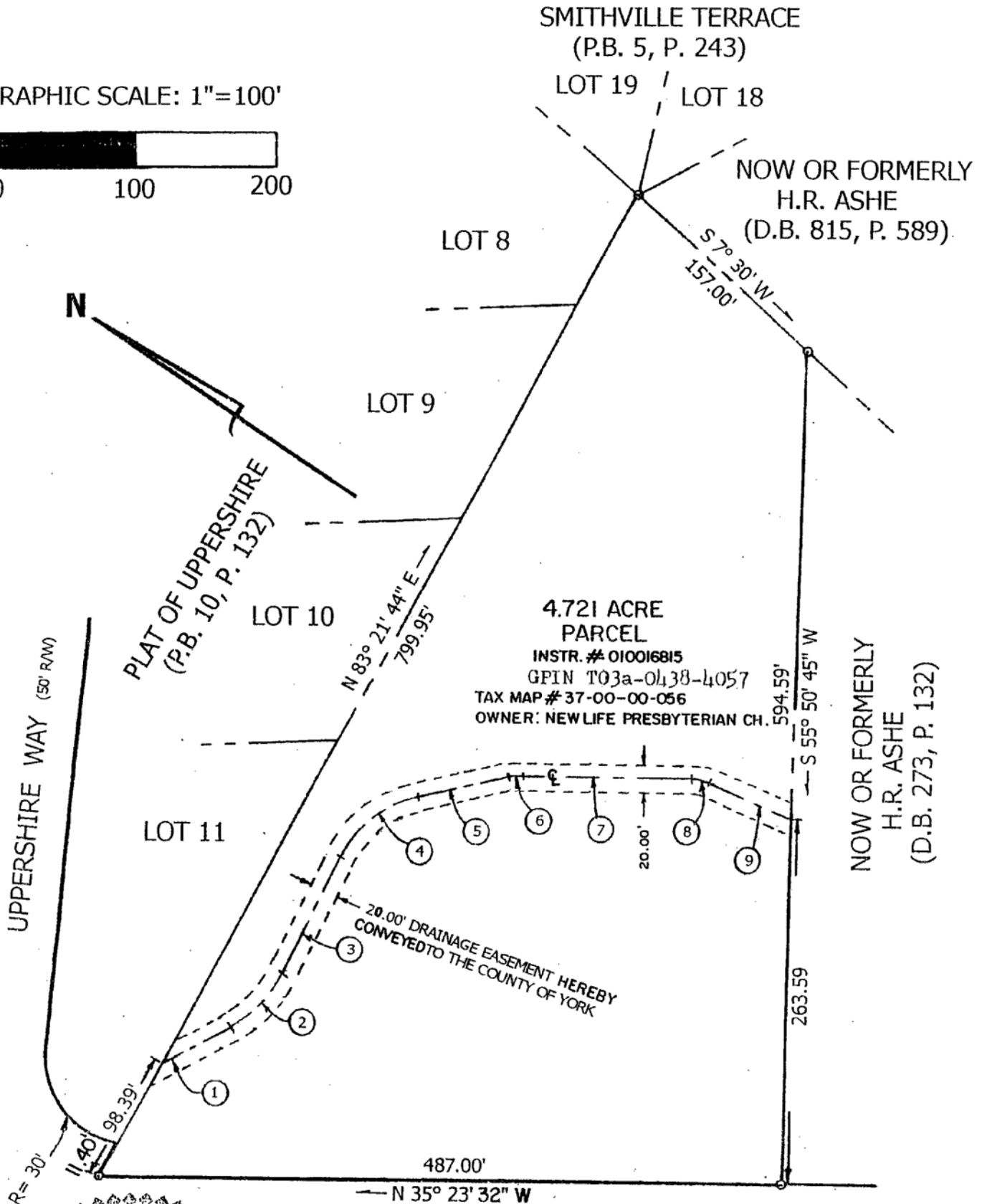
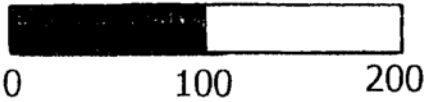


**EASEMENT CENTERLINE DIMENSIONS:**

	BEARING	DISTANCE	CHORD	ARC	RADIUS	DELTA
1	S 63°23'32" E	56.10'				
2	S 80°53'32" E		54.00'	54.85'	89.79'	35°00'00"
3	N 81°36'28" E	93.00'				
4	S 72°53'32" E		69.00'	71.33'	80.14'	51°00'00"
5	S 47°23'32" E	67.87'				
6	S 40°46'24" E		10.23'	10.25'	44.38'	13°14'17"
7	S 34°09'15" E	120.96'				
8	S 22°55'17" E		14.00'	14.09'	35.93'	22°27'57"
9	S 11°41'18" E	54.43'				

GRAPHIC SCALE: 1"=100'



2006 JUL 21 PM 12: 13

COMMONWEALTH OF VIRGINIA  
 PROFESSIONAL ENGINEER  
 JOSEPH ANTHONY BECK  
 NO. 2030  
 26697

YORK COUNTY (RT. 134)  
 APPROVED FOR RECORDATION  
 BY: *Ch. Maddalena*  
 CHIEF OF DEVELOPMENT & COMPLIANCE  
 7/20/06  
**BECK ASSOCIATES**  
 NORFOLK, VIRGINIA DC

PLAT OF EASEMENT DEDICATION  
 FROM: NEW LIFE PRESBYTERIAN CHURCH TRUSTEES  
 TO: COUNTY OF YORK, VA  
 DATE: DECEMBER 18, 2002