

# BUNTING POINT ESTATES

BETHEL DISTRICT  
YORK COUNTY, VIRGINIA  
OCTOBER 13, 2005

ADPA A.D. POTTS & ASSOCIATES, INC.  
11524 JEFFERSON AVENUE  
NEWPORT NEWS, VIRGINIA 23601  
PHONE: (757) 595-4810



SCALE: 1"=60'

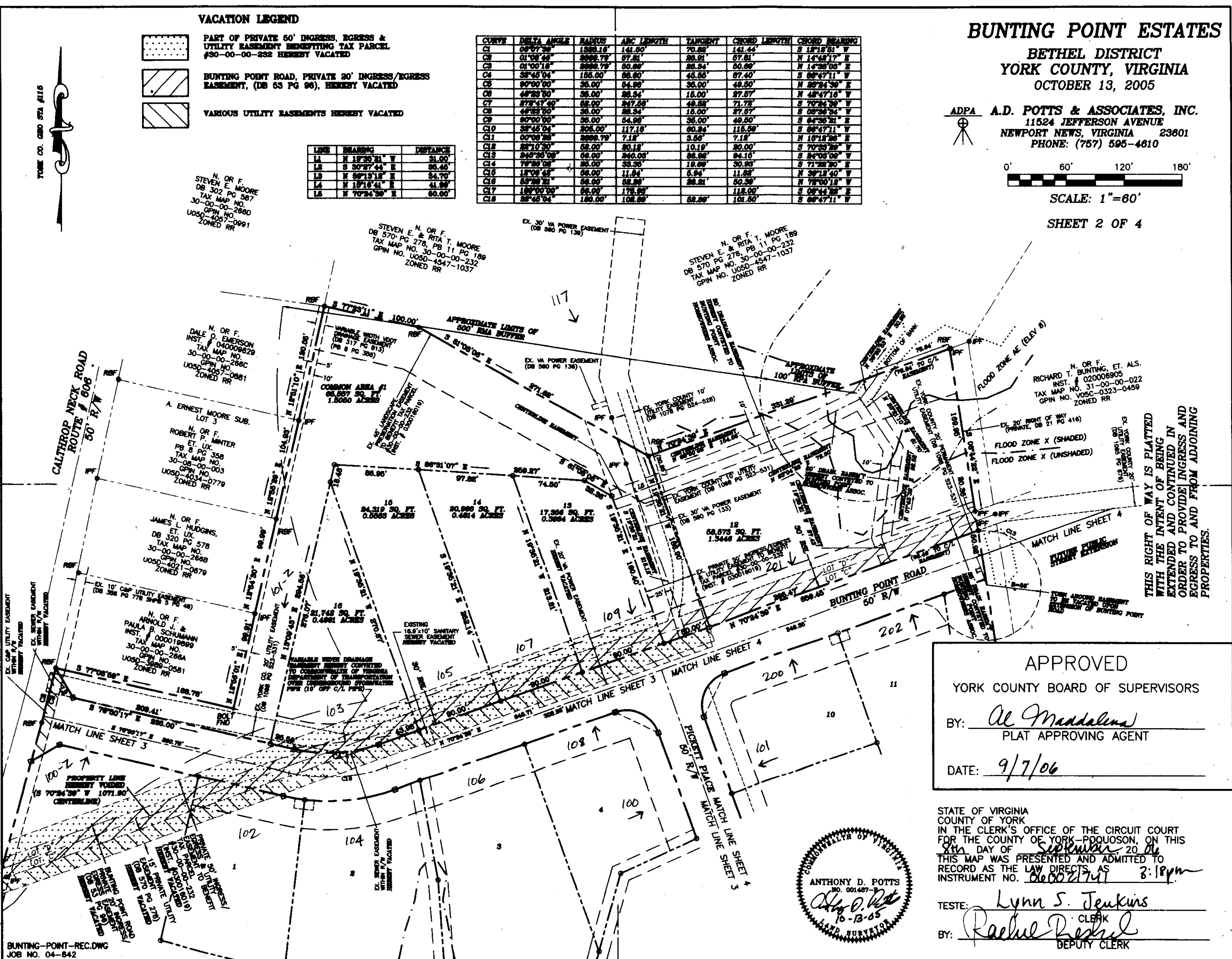
SHEET 2 OF 4

### VACATION LEGEND

- PART OF PRIVATE 50' INGRESS, EGRESS & UTILITY EASEMENT BENEFITTING TAX PARCEL #30-00-00-232 HEREBY VACATED
- BUNTING POINT ROAD, PRIVATE 20' INGRESS/EGRESS EASEMENT, (DB 53 PG 96), HEREBY VACATED
- VARIOUS UTILITY EASEMENTS HEREBY VACATED

CURVE	DELTA ANGLE	RADIUS	ARC LENGTH	TANGENT	CHORD LENGTH	CHORD BEARING
C1	00°07'39"	1383.16'	141.50'	70.89'	141.44'	S 18°19'51" W
C2	01°08'49"	2009.79'	57.81'	28.91'	67.61'	N 14°48'17" E
C3	01°00'18"	2009.79'	60.89'	28.94'	60.89'	N 14°36'03" E
C4	38°45'04"	155.00'	88.90'	45.55'	87.40'	S 88°47'11" W
C5	90°00'00"	35.00'	54.98'	35.00'	49.50'	S 89°24'39" E
C6	46°29'50"	35.00'	58.34'	15.00'	27.57'	N 48°47'18" W
C7	27°47'40"	52.00'	347.59'	48.58'	71.78'	S 70°24'39" W
C8	44°52'50"	35.00'	58.34'	15.00'	27.57'	S 08°36'34" W
C9	90°00'00"	35.00'	54.98'	35.00'	49.50'	S 88°36'31" E
C10	38°45'04"	205.00'	117.18'	60.84'	115.99'	S 88°47'11" W
C11	00°00'00"	2009.79'	7.15'	3.58'	7.15'	N 10°15'38" E
C12	22°10'30"	52.00'	20.15'	10.19'	20.00'	S 70°35'29" W
C13	246°30'08"	52.00'	240.05'	24.05'	24.16'	S 84°08'08" W
C14	79°29'08"	52.00'	33.35'	19.89'	30.93'	S 71°28'30" E
C15	18°09'45"	52.00'	11.84'	5.94'	11.88'	N 38°12'40" W
C16	65°29'31"	52.00'	58.99'	28.21'	50.59'	N 78°00'12" W
C17	189°00'00"	52.00'	175.99'	175.99'	118.00'	S 08°44'28" E
C18	38°45'04"	180.00'	102.89'	52.89'	101.50'	S 88°47'11" W

LINE	BEARING	DISTANCE
L1	N 18°35'21" W	31.00'
L2	S 50°27'44" E	85.48'
L3	N 89°13'12" E	34.70'
L4	N 18°16'41" E	41.89'
L5	N 70°24'39" E	60.00'



2005 SEP - 8 PM 3:18

YORK CO. GEO STA #115

N. OR F.  
STEVEN E. MOORE  
DB 302 PG 587  
TAX MAP NO.  
30-00-00-2860  
GPN NO.  
U050-4057-0991  
ZONED RR

STEVEN E. & RITA T. MOORE  
DB 570 PG 278, PB 11 PG 189  
TAX MAP NO. 30-00-00-232  
GPN NO. U050-4547-1037  
ZONED RR

N. OR F. STEVEN E. & RITA T. MOORE  
DB 570 PG 278, PB 11 PG 189  
TAX MAP NO. 30-00-00-232  
GPN NO. U050-4547-1037  
ZONED RR

N. OR F. RICHARD T. BUNTING, ET. ALS.  
INST. # 020006905  
TAX MAP NO. 31-00-00-022  
GPN NO. V050-0323-0459  
ZONED RR

THIS RIGHT OF WAY IS PLATTED WITH THE INTENT OF BEING EXTENDED AND CONTINUED IN ORDER TO PROVIDE INGRESS AND EGRESS TO AND FROM ADJOINING PROPERTIES.

APPROVED

YORK COUNTY BOARD OF SUPERVISORS

BY: Al Maddalena  
PLAT APPROVING AGENT

DATE: 9/7/06



STATE OF VIRGINIA  
COUNTY OF YORK  
IN THE CLERK'S OFFICE OF THE CIRCUIT COURT FOR THE COUNTY OF YORK-P.O. QUONSON, ON THIS 8th DAY OF September 2006  
THIS MAP WAS PRESENTED AND ADMITTED TO RECORD AS THE LAW DIRECTS, AS INSTRUMENT NO. 060021741 3:18pm

TESTE: Lynn S. Jenkins  
CLERK

BY: Rachel P. ...  
DEPUTY CLERK