

Plat Book No. 9

Page 255

Instr 060023200

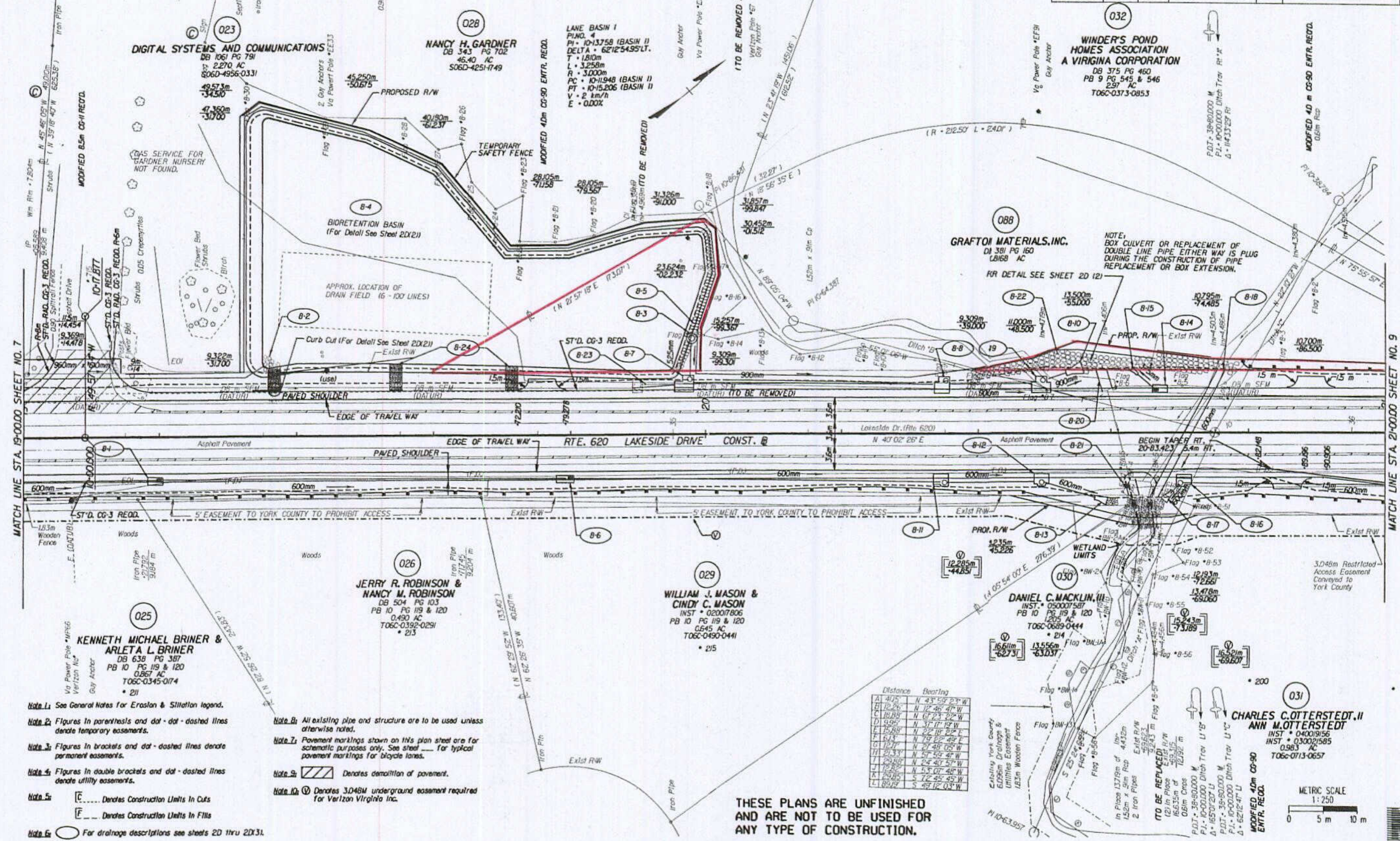
DESIGN FEATURES RELATING TO CONSTRUCTION OR TO REGULATION AND CONTROL OF TRAFFIC MAY BE SUBJECT TO CHANGES DEEMED NECESSARY BY THE DEPARTMENT

REGION	STATE	PROJECT	ROUTE	PROJECT	SHEET NO.
3	VA.		620	0620-099-176,C-501	8

SUPERVISED BY: CHELSEA STAMMERS (05/2005-2008)
DESIGNED BY: LEE C. GARDNER (07/2002-2008)
CADD OPERATOR: KENNETH MICHAEL BRINER (07/2002-2008)
REVISED BY:

MATCH LINE STA. 19+00.00 SHEET NO. 7

MATCH LINE STA. 21+00.00 SHEET NO. 9



- Note 1: See General Notes for Erosion & Siltation legend.
- Note 2: Figures in parenthesis and dot-dashed lines denote temporary easements.
- Note 3: Figures in brackets and dot-dashed lines denote permanent easements.
- Note 4: Figures in double brackets and dot-dashed lines denote utility easements.
- Note 5: [E] Denotes Construction Limits In Cuts
[F] Denotes Construction Limits In Fills
- Note 6: [O] For drainage descriptions see sheets 2D thru 2D31.

- Note 7: All existing pipe and structure are to be used unless otherwise noted.
- Note 8: Pavement markings shown on this plan sheet are for schematic purposes only. See sheet [] for typical pavement markings for bicycle lanes.
- Note 9: [X] Denotes demolition of pavement.
- Note 10: [V] Denotes 3.048M underground easement required for Verizon Virginia Inc.

Point	Distance	Bearing
A	40.75	N 43° 59' 23" W
B	12.26	N 12° 46' 47" W
C	18.89	N 07° 23' 02" W
D	9.95	N 37° 17' 15" W
E	15.88	N 27° 48' 05" W
F	6.74	N 79° 02' 49" E
G	12.77	N 27° 48' 05" W
H	21.33	N 57° 59' 47" W
I	29.89	N 24° 40' 57" W
J	12.82	N 53° 07' 48" W
K	25.85	S 72° 45' 45" W
L	89.19	S 49° 12' 03" W

THESE PLANS ARE UNFINISHED AND ARE NOT TO BE USED FOR ANY TYPE OF CONSTRUCTION.



7/14/2008 10:57

2008-10-17 10:57 AM \\server-FILES\PLT\USER\luc...conf\james.stammers\1101-0000-176\1101-0000-176-08.dwg