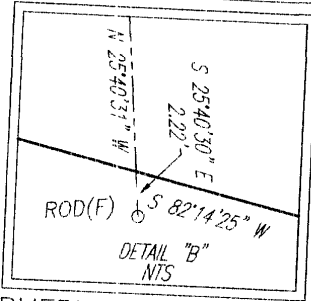
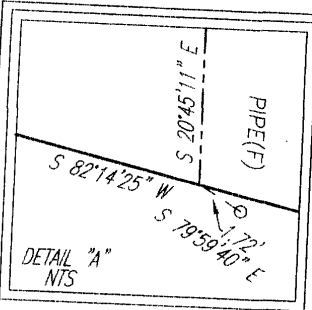


YORK COUNTY
APPROVED FOR RECORDATION
 BY: *J.B. [Signature]*
CHIEF OF DEVELOPMENT & COMPLIANCE
 Right-of-Way Agent
 DATE: Nov. 16, 2006



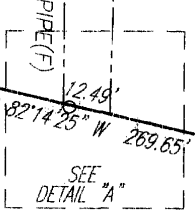
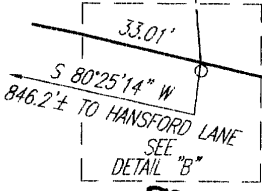
NOW OR FORMERLY
 BETTY M. FIRMAN
 D.B. 1109, PG. 494
 D.B. 267, PG. 757(PLAT)
 GPIN: V08B-2998-4819
 TAX MAP#: 026 12A

NOW OR FORMERLY
 BETTY M. FIRMAN
 D.B. 1109, PG. 494
 D.B. 267, PG. 757(PLAT)
 GPIN: V08B-3109-4837
 TAX MAP#: 026 12B

**10'x20' UTILITY EASEMENT
 HEREBY CONVEYED
 TO YORK COUNTY
 200 SQ.FT. OR 0.005 ACRE**

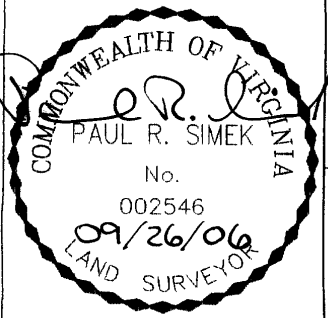
NOW OR FORMERLY
 GEORGE C. PAULS, ET UX
 D.B. 267, PG. 755
 D.B. 267, PG. 757(PLAT)
 GPIN: V08B-3066-4668
 TAX MAP#: 026 15
 #3919

NOW OR FORMERLY
 BETTY M. FIRMAN
 D.B. 1109, PG. 494
 D.B. 267, PG. 757(PLAT)
 GPIN: V08B-3191-4694
 TAX MAP#: 026 12



SEAFORD ROAD
 (80' R/W) SR.622

- NOTES:
1. THIS PLAT IS INTENDED FOR A DESCRIPTION OF UTILITY EASEMENT ONLY, AND DOES NOT CONSTITUTE A BOUNDARY SURVEY.
 2. THIS SURVEY WAS PERFORMED WITHOUT THE BENEFIT OF A TITLE REPORT, AND MAY NOT REFLECT ALL EASEMENTS OR RESTRICTIONS THAT MAY AFFECT THE PROPERTY.



REFERENCES:
 D.B. 267, PG. 755
 D.B. 267, PG. 757(PLAT)

PLAT OF UTILITY EASEMENT ACQUISITION
 FROM: GEORGE C. PAULS, ET UX
 TO: COUNTY OF YORK, VIRGINIA
 PROJECT: YORK POINT SEWER PROJECT

DATE: 9/26/06

SCALE: 1" = 40'

MERIDIAN IS BASED ON:
 VIRGINIA STATE PLANE
 COORDINATE SYSTEM,
 SOUTH ZONE, NAD 83
 U.S. SURVEY FEET

PRECISION MEASUREMENTS, INC.
 SURVEYORS • GPS • 3-D SCANNING • MAPPERS
 813 DILIGENCE DRIVE, SUITE 119
 NEWPORT NEWS, VIRGINIA 23606
 (757) 595-7570

