

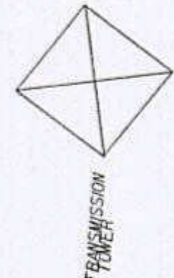
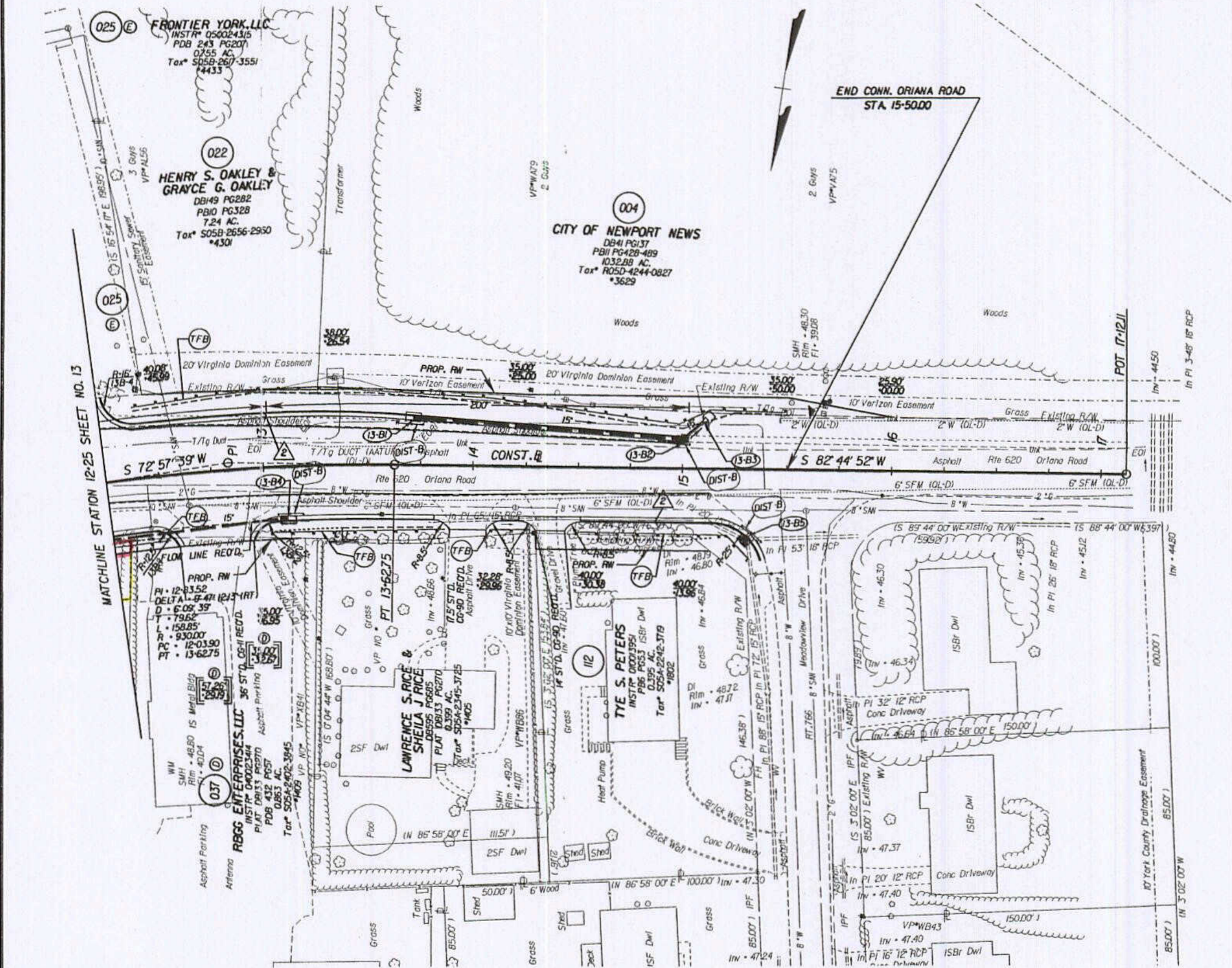
SURVEYED BY: BOB HARMON 05/12/53-537
 SUPERVISED BY: P.H. BRIDAL 07/25/2557
 DESIGNED BY: M.D. WINTER 07/25/2556
 HAMPTON ROADS DISTRICT DESIGN UNIT

DESIGN FEATURES RELATING TO CONSTRUCTION OR TO REGULATION AND CONTROL OF TRAFFIC MAY BE SUBJECT TO CHANGE AS DEEMED NECESSARY BY THE DEPARTMENT

REVISED	STATE	FEDERAL AID PROJECT	ROUTE	STATE PROJECT	SHEET NO.
	VA.		17	6017-099-129, RW-201, C-501	13B

REFERENCES
 (PROFILES, DETAIL & DRAINAGE DESCRIPTION SHEETS, ETC.)

CONNECTION PROFILES	13D
ENTRANCE PROFILES	24J
DRAINAGE DESC.	2H(1) - 2H(7)



THESE PLANS ARE UNFINISHED AND ARE NOT TO BE USED FOR ANY TYPE OF CONSTRUCTION.



NOTE: SEE GENERAL NOTES FOR E&S LEGEND
 Note: Figures in brackets and dot-dashed lines denote Permanent Easements.
 () DENOTES DRAINAGE STRUCTURE NUMBER
 (V) Denotes variable easement required for Dominion Virginia Power
 [---] Denotes Construction Limits In Cuts
 [---] Denotes Construction Limits In Fills
 (E) ST'D. CG-6 REQ'D.

PLAN NO.	PROJECT	FILE NO.	SHEET NO.
	6017-099-129		13B

doc instr# 060028981 Plat Book No. 9 Page 280