

**LINE TABLE**

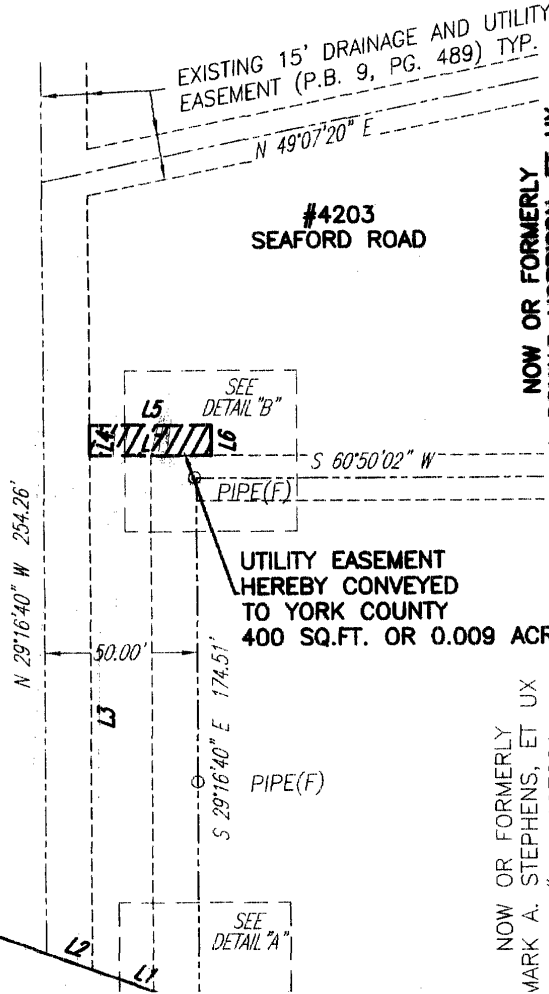
| LINE | BEARING       | DISTANCE |
|------|---------------|----------|
| L1   | S 80°41'13" W | 37.24'   |
| L2   | S 80°41'13" W | 15.96'   |
| L3   | N 29°16'40" W | 169.37'  |
| L4   | N 29°16'40" W | 10.00'   |
| L5   | N 60°50'02" E | 40.00'   |
| L6   | S 29°16'40" E | 10.00'   |
| L7   | S 60°50'02" W | 40.00'   |



**BAY TREE BEACH ROAD**  
(VARIABLE WIDTH R/W) SR. 712  
N 06°15'35" W  
N 59°27'07" W  
9.92'

NOW OR FORMERLY  
J. DONALD MORRISON, ET UX  
D.B. 643, PG. 20  
GPIN: V08B-4149-4876  
TAX MAP#: 026 79

**SEAFORD ROAD**  
(70' R/W) SR. 62  
297.05'  
S 80°41'13" W



NOW OR FORMERLY  
J. DONALD MORRISON, ET UX  
D.B. 406, PG. 344  
P.B. 9, PG. 489  
GPIN: V09D-4500-0125  
TAX MAP#: 026 6 B

NOW OR FORMERLY  
MARK A. STEPHENS, ET UX  
INST# 040007221  
P.B. 9, PG. 489  
D.B. 582, PG. 534 (PLAT)  
GPIN: V08B-4893-4991  
TAX MAP#: 026 75

**UTILITY EASEMENT  
HEREBY CONVEYED  
TO YORK COUNTY  
400 SQ.FT. OR 0.009 ACRE**