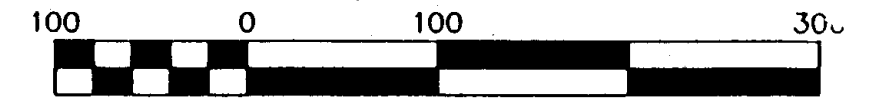


SHALLOW MARSH

BETHEL MAGISTERIAL DISTRICT
 COUNTY OF YORK, VIRGINIA
DAVIS & ASSOCIATES P.C.
 SURVEYORS - PLANNERS
 3630 GEORGE WASHINGTON
 MEMORIAL HIGHWAY - SUITE "G"
 YORKTOWN, VIRGINIA 23693



SCALE: 1" = 100' DATE: 24 JULY 06

SHEET 2 OF 2

- SYMBOLS -

- DENOTES MINIMUM BUILDING SETBACK LINE
- DENOTES IRON ROD FOUND
- DENOTES IRON PIPE FOUND
- DENOTES IRON RODS TO BE SET AT ALL PROPERTY LINE JUNCTURES
- DENOTES CONCRETE MONUMENT FOUND
- DENOTES CONCRETE MONUMENT TO BE SET
- RMA DENOTES RESOURCE MANAGEMENT AREA
- RPA DENOTES RESOURCE PROTECTION AREA

LINE TABLE

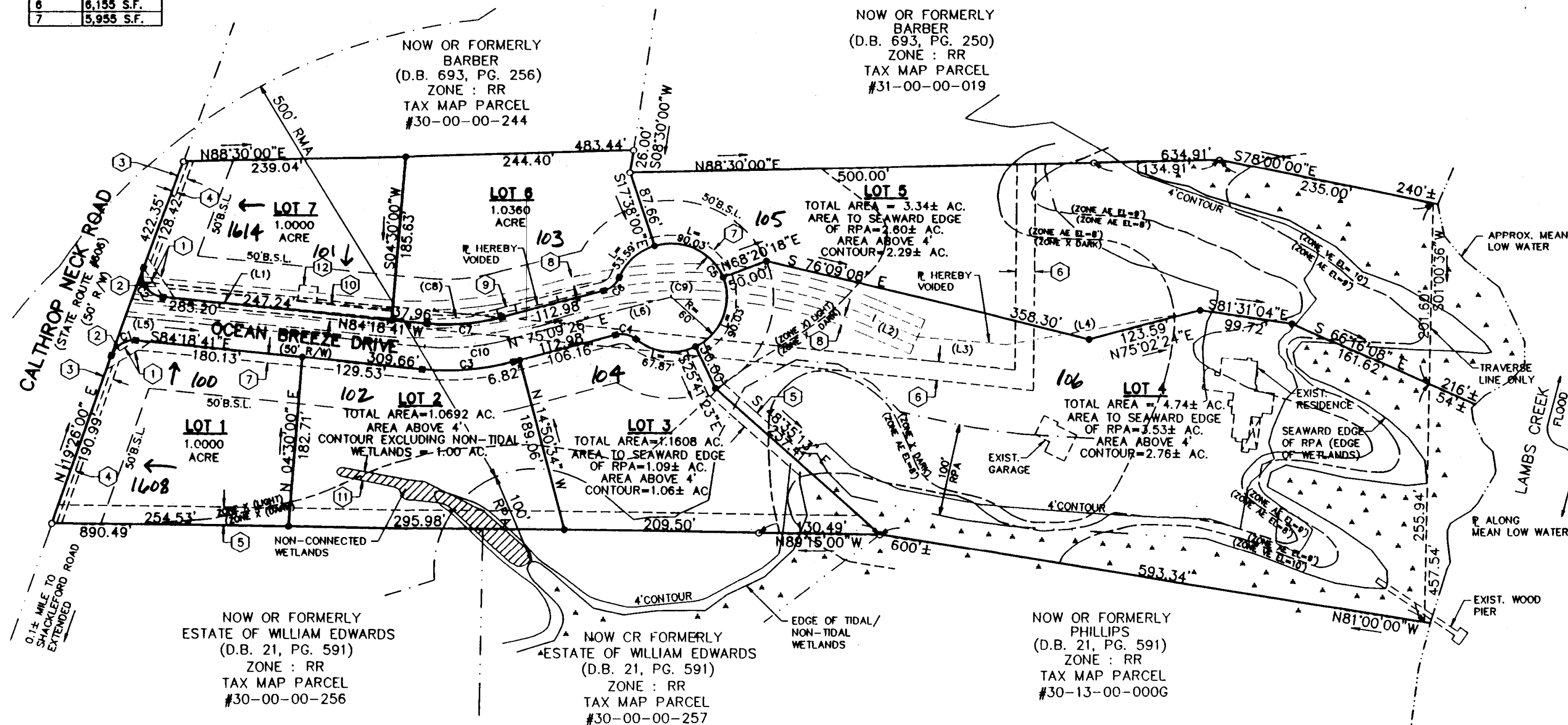
NUMBER	DIRECTION	DISTANCE
L1	S 84°37'36" E	266.65'
L2	S 88°45'18" E	50.76'
L3	S 85°22'23" E	95.80'
L4	N 79°51'57" E	211.86'
L5	S 84°18'41" E	323.17'
L6	N 75°09'28" W	181.72'

CURVE DATA TABLE

NUMBER	DELTA ANGLE	RADIUS	ARC LENGTH	TANGENT	CHORD LENGTH	CHORD DIRECTION
C1	76°15'19"	25.00	33.27	19.62	30.87	N 57°33'39" E
C2	103°44'41"	25.00	45.27	31.85	39.33	N 32°26'21" W
C3	20°31'52"	275.00	98.54	49.81	98.02	N 85°25'23" E
C4	53°58'05"	25.00	23.55	12.73	22.69	S 77°51'31" E
C5	287°56'10"	60.00	301.53	82.49	-	-
C6	53°58'05"	25.00	23.55	12.73	22.69	S 48°10'24" W
C7	20°31'52"	225.00	80.63	40.75	80.19	S 85°25'23" W
C8	21°59'32"	500.00	191.92	97.16	190.74	S 84°22'38" W
C9	39°51'51"	500.95	348.54	181.66	341.55	S 86°41'13" E
C10	20°31'52"	250.00	89.58	45.28	89.11	N 85°25'23" E

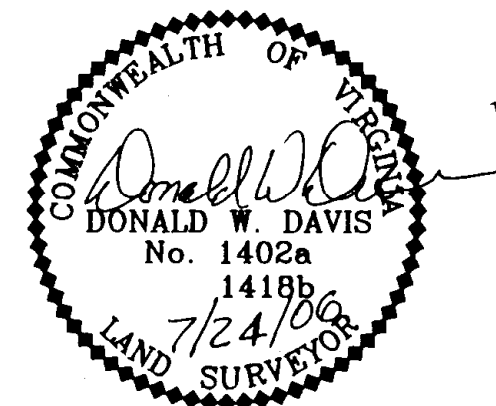
MAXIMUM IMPERVIOUS COVER

LOT	AREA
1	5,955 S.F.
2	5,955 S.F.
3	6,480 S.F.
4	20,910 S.F.
5	15,456 S.F.
6	6,155 S.F.
7	5,955 S.F.



EASEMENT LEGEND

- | | |
|--|--|
| ① 10' SIGN EASEMENT HEREBY CONVEYED TO THE SHALLOW MARSH HOMEOWNERS ASSOC. | ⑦ 10' LANDSCAPE PRESERVATION EASEMENT HEREBY CONVEYED TO YORK COUNTY |
| ② VARIABLE WIDTH SIGHT EASEMENT HEREBY CONVEYED TO YORK COUNTY | ⑧ EXIST. 10' PRIVATE LANDSCAPE PROTECTION ZONE AS PER COVENANTS AND RESTRICTIONS, (INSTR.#040022228) HEREBY VOIDED |
| ③ 10' RESTRICTED ACCESS EASEMENT HEREBY CONVEYED TO YORK COUNTY | ⑨ 10'X20' UTILITY EASEMENT HEREBY CONVEYED TO COUNTY OF YORK |
| ④ EXIST. 5' YORK COUNTY LANDSCAPE PRESERVATION EASEMENT (INSTR.#040022228) | ⑩ EXIST. 20' PRIVATE EASEMENT OF INGRESS/EGRESS & DRAINAGE & UTILITIES (INSTR.#040022228) HEREBY VOIDED |
| ⑤ 20' DRAINAGE EASEMENT HEREBY CONVEYED TO THE COUNTY OF YORK | ⑪ VARIABLE WITH WETLANDS CONSERVATION EASEMENT HEREBY CONVEYED TO YORK COUNTY |
| ⑥ EXIST. 20' YORK COUNTY UTILITY EASEMENT (D.B. 1060, PAGE 258) | ⑫ VARIABLE WITH UTILITY EASEMENT (10' OFF SAN. SEWER) HEREBY CONVEYED TO YORK COUNTY |



APPROVED
 YORK COUNTY BOARD OF SUPERVISORS

BY: Al Maddalena
 PLAT APPROVING AGENT

DATE: 12/13/06

STATE OF VIRGINIA
 COUNTY OF YORK
 IN THE CLERK'S OFFICE OF THE CIRCUIT
 COURT FOR THE COUNTY OF YORK-POQUOSON
 THE 14th DAY OF Dec 2006, THIS MAP WAS
 PRESENTED AND ADMITTED TO RECORD AS
 THE LAW DIRECTS AS INSTRUMENT # 260030818
 11:42Am
 TESTE: Lynn S. Jenkins
 CLERK
 BY: Al Maddalena