

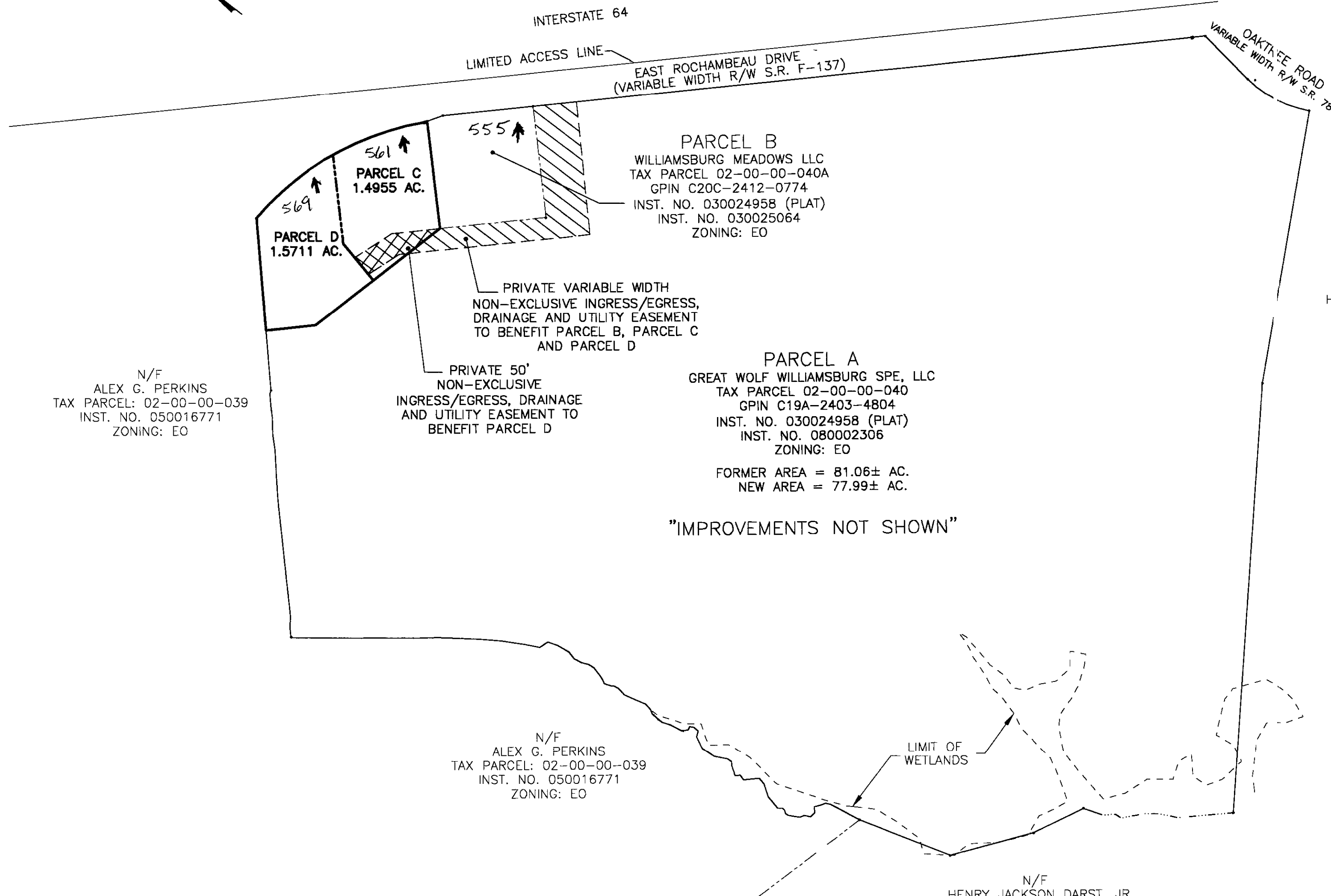
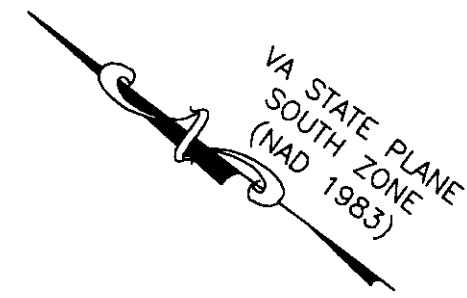
**SUBDIVISION OF  
PARCEL A,  
BEING THE PROPERTY OF  
GREAT WOLF  
WILLIAMSBURG SPE, LLC  
A DELAWARE LIMITED LIABILITY COMPANY**  
  
BRUTON DISTRICT, YORK COUNTY, VIRGINIA

DATE: NOVEMBER 21, 2008 SCALE: 1"=200'

SHEET 2 OF 3

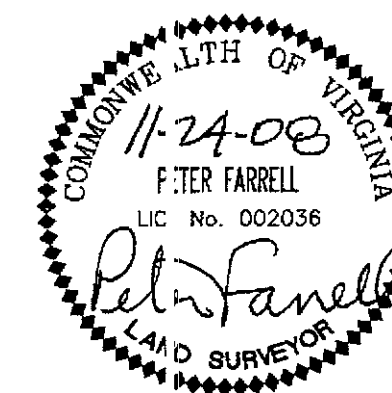
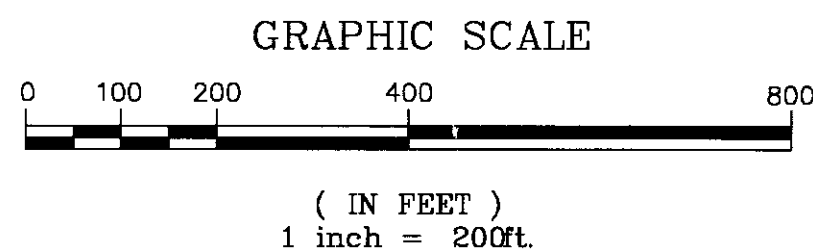


Engineers • Planners • Surveyors  
Landscape Architects • Environmental Consultants  
4029 IRONBOUND ROAD SUITE 100  
WILLIAMSBURG, VIRGINIA 23188  
(757) 253-2975 FAX: (757) 229-0049



**LEGEND**

- IRF • IRON ROD FOUND
- IRS • IRON ROD TO BE SET
- EXISTING EASEMENT
- PROPOSED EASEMENT
- BUILDING SETBACK LINE
- PROPERTY LINE
- [Hatched Box] PROPOSED PRIVATE VARIABLE WIDTH  
NON-EXCLUSIVE INGRESS/EGRESS,  
DRAINAGE AND UTILITY EASEMENT
- [Cross-hatched Box] PROPOSED PRIVATE 50' NON-EXCLUSIVE  
INGRESS/EGRESS, DRAINAGE  
AND UTILITY EASEMENT



APPROVED:  
YORK COUNTY BOARD OF SUPERVISORS  
BY: *Al Maddalena*  
PLAT APPROVING AGENT  
DATE: 1/15/09

STATE OF VIRGINIA, COUNTY OF YORK  
IN THE CLERK'S OFFICE OF THE CIRCUIT COURT FOR THE  
COUNTY OF YORK-POQUOSON THE 15-DAY OF  
January 2009, THIS MAP WAS PRESENTED AND  
ADMITTED TO RECORD AS THE LAW DIRECTS AS  
INSTRUMENT NO. 090000721 10:52 AM  
TESTE: *Lynn S. Mendibur*  
CLERK

*Lynn S. Mendibur*  
D.C.

2008 JAN 15 AM 10:52