

EASEMENT LINE TABLE		
LINE	LENGTH	BEARING
L1	113.00'	N43°02'31"W
L2	103.26'	N70°02'19"W

CURVE TABLE						
CURVE	LENGTH	RADIUS	TANGENT	CHORD	CHORD BEARING	DELTA
C1	233.39'	666.20'	117.90'	232.20'	N76°36'59"W	20°04'20"
C2	227.80'	666.20'	115.02'	226.69'	S56°47'04"E	19°35'30"

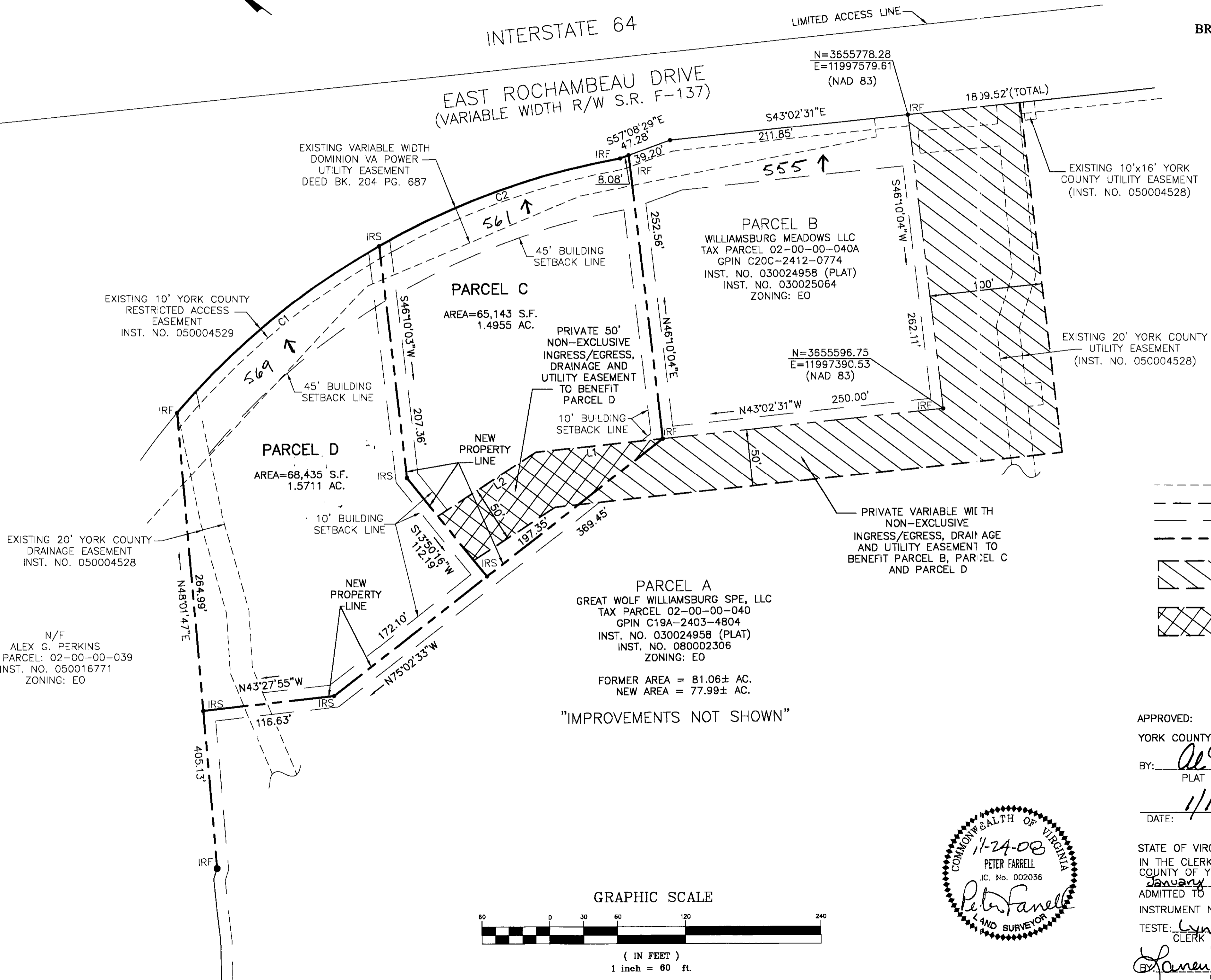
**SUBDIVISION OF
PARCEL A,
BEING THE PROPERTY OF
GREAT WOLF
WILLIAMSBURG SPE, LLC
A DELAWARE LIMITED LIABILITY COMPANY**
BRUTON DISTRICT, YORK COUNTY, VIRGINIA

DATE: NOVEMBER 21, 2008 SCALE: 1"=60'
SHEET 3 OF 3

**LANDMARK
DESIGN GROUP**

Engineers • Planners • Surveyors
Landscape Architects • Environmental Consultants
4029 IRONBOUND ROAD SUITE 100
WILLIAMSBURG, VIRGINIA 23188
(757) 253-2975 FAX: (757) 229-0049

INTERSTATE 64
EAST ROCHAMBEAU DRIVE
(VARIABLE WIDTH R/W S.R. F-137)



EXISTING 10'x16' YORK COUNTY UTILITY EASEMENT (INST. NO. 050004528)

EXISTING 20' YORK COUNTY UTILITY EASEMENT (INST. NO. 050004528)

PARCEL C
AREA=65,143 S.F.
1.4955 AC.

PARCEL B
WILLIAMSBURG MEADOWS LLC
TAX PARCEL 02-00-00-040A
GPIN C20C-2412-0774
INST. NO. 030024958 (PLAT)
INST. NO. 030025064
ZONING: EO

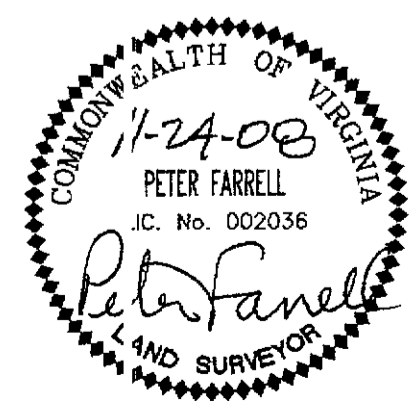
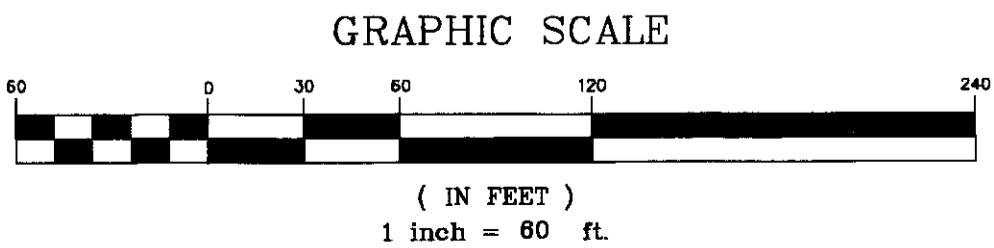
PARCEL D
AREA=68,435 S.F.
1.5711 AC.

PARCEL A
GREAT WOLF WILLIAMSBURG SPE, LLC
TAX PARCEL 02-00-00-040
GPIN C19A-2403-4804
INST. NO. 030024958 (PLAT)
INST. NO. 080002306
ZONING: EO
FORMER AREA = 81.06± AC.
NEW AREA = 77.99± AC.

"IMPROVEMENTS NOT SHOWN"

LEGEND

- IRF • IRON ROD FOUND
- IRS • IRON ROD TO BE SET
- EXISTING EASEMENT
- - - PROPOSED EASEMENT
- BUILDING SETBACK LINE
- PROPERTY LINE
- [Hatched Box] PROPOSED PRIVATE VARIABLE WIDTH NON-EXCLUSIVE INGRESS/EGRESS, DRAINAGE AND UTILITY EASEMENT
- [Cross-hatched Box] PROPOSED PRIVATE 50' NON-EXCLUSIVE INGRESS/EGRESS, DRAINAGE AND UTILITY EASEMENT



APPROVED:
YORK COUNTY BOARD OF SUPERVISORS
BY: *Al Maddalena*
PLAT APPROVING AGENT
DATE: 1/15/09

STATE OF VIRGINIA, COUNTY OF YORK
IN THE CLERK'S OFFICE OF THE CIRCUIT COURT FOR THE COUNTY OF YORK-POQUOSON THE 15th DAY OF January 2009, THIS MAP WAS PRESENTED AND ADMITTED TO RECORD AS THE LAW DIRECTS AS INSTRUMENT NO. 090000721 10:52 AM
TESTE: *Lynn S. Mendibur*
CLERK
BY: *Lane S. D.C.*