

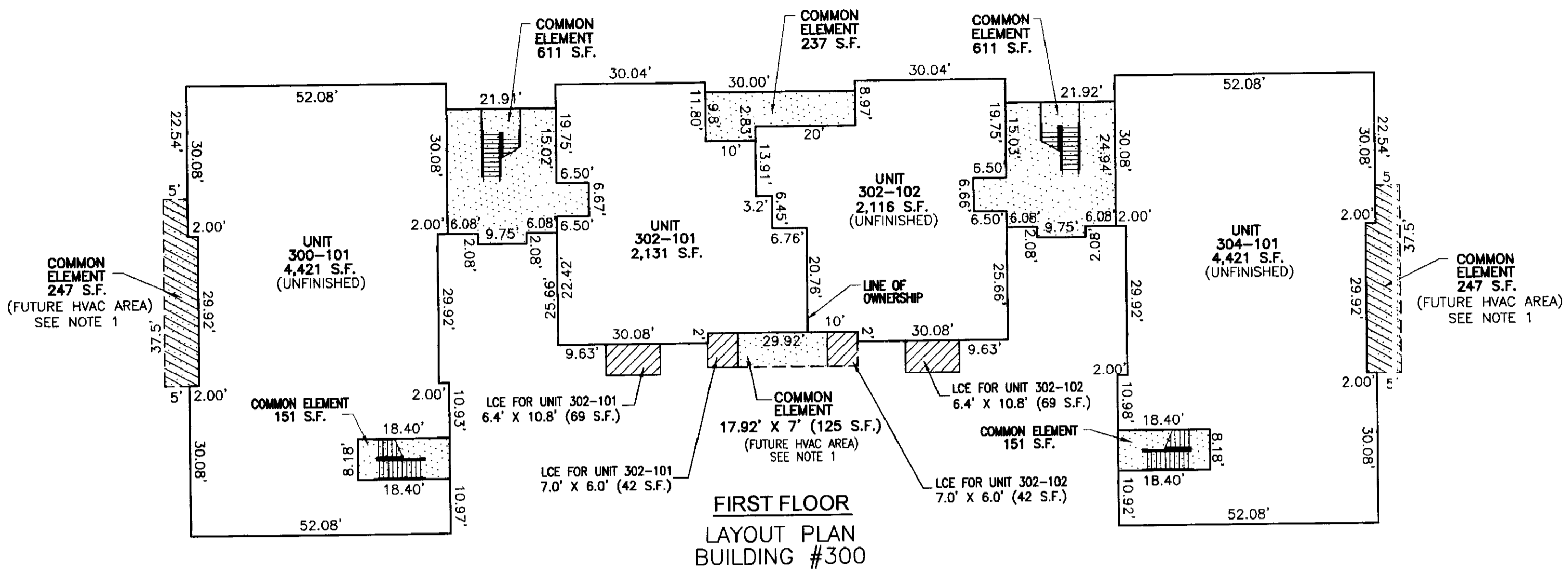
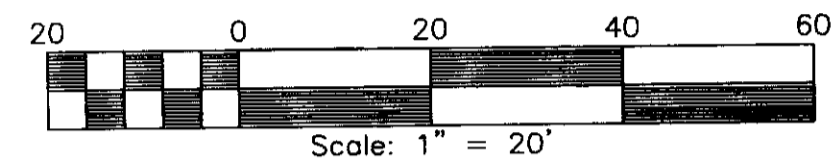
PLAT AND PLANS OF
PHASE I
**TOWNE PARK CORPORATE CENTER
OFFICE CLUSTER, A CONDOMINIUM
BUILDING #300**

UNITS: 300-101, 302-101, 302-102, 304-101,
300-201, 302-201, 304-201
Bruton District, York County, Virginia
DATE: 11/12/08 SCALE: AS NOTED JOB# 07-359
REVISED: 1/22/09

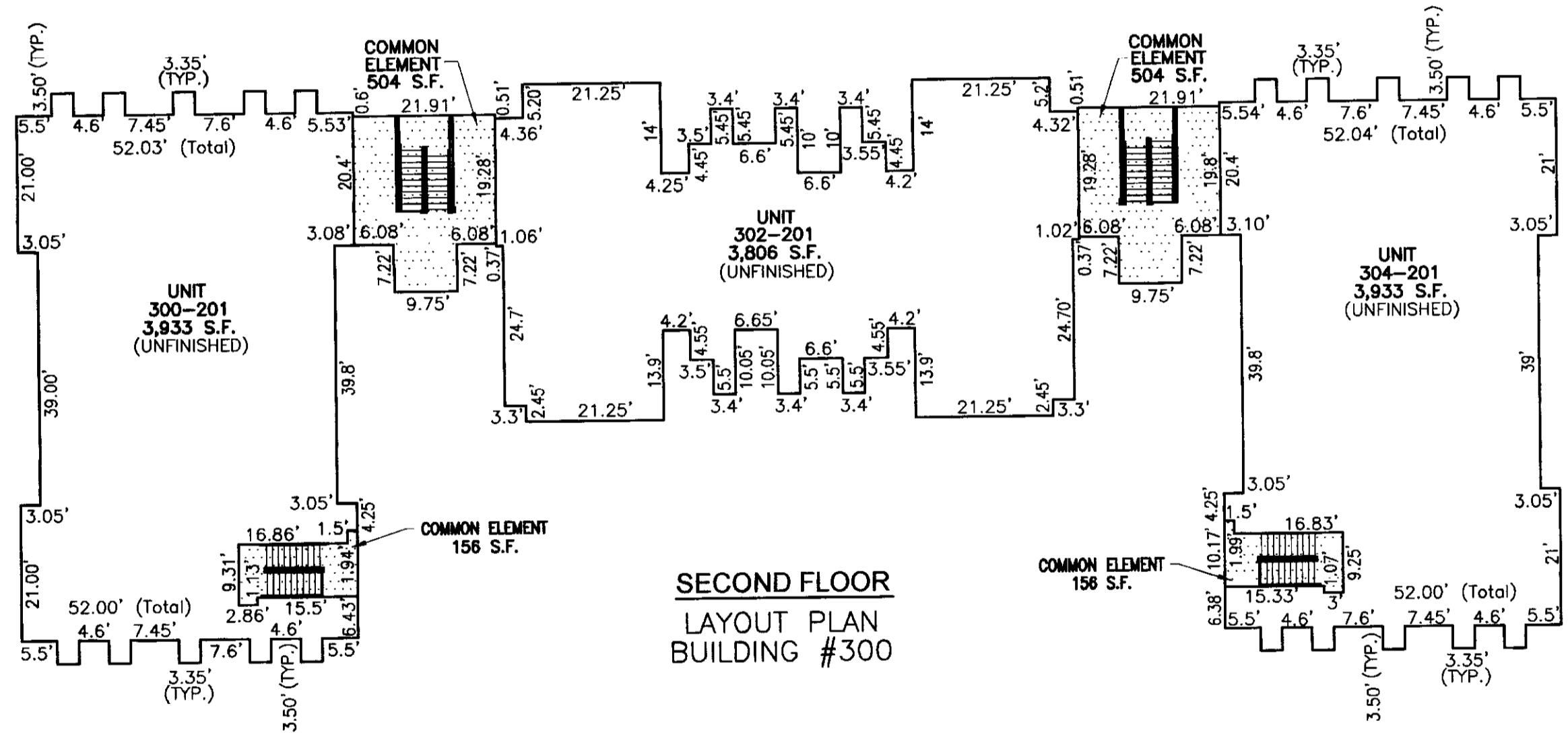
**LandTech
Resources, Inc.**
Surveying • Engineering • GPS

205-E Bulifants Blvd., Williamsburg, VA 23188
Phone: (757) 565-1677 Fax: (757) 565-0782
web: landtechresources.com

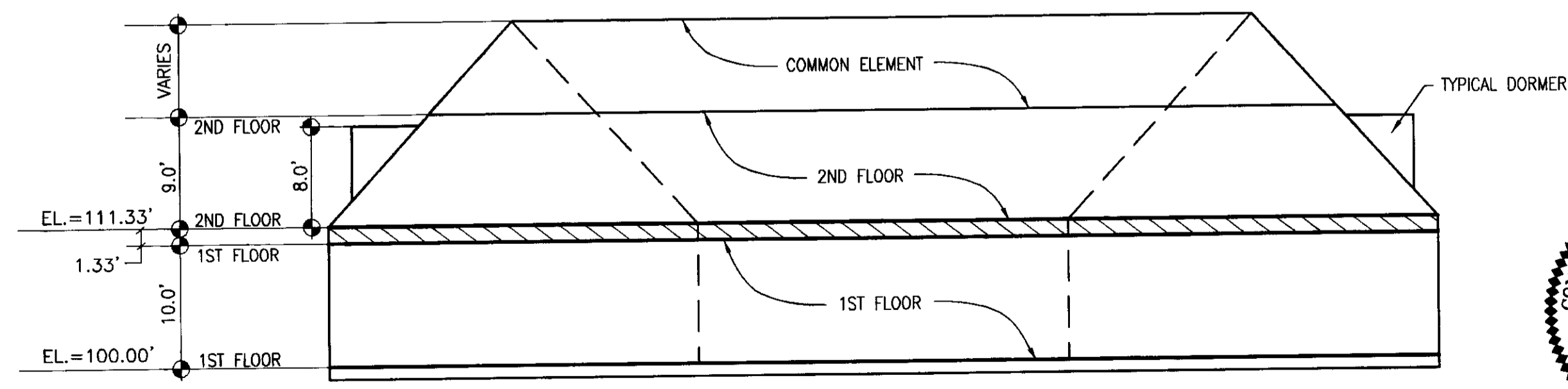
SHEET 3 OF 3



**FIRST FLOOR
LAYOUT PLAN
BUILDING #300**



**SECOND FLOOR
LAYOUT PLAN
BUILDING #300**



**TYPICAL BUILDING SECTION
N.T.S.
BUILDING #300**

- INDICATES UNIT AREA
- INDICATES COMMON ELEMENT
- INDICATES LIMITED COMMON ELEMENT (LCE)
- SEE NOTE #1

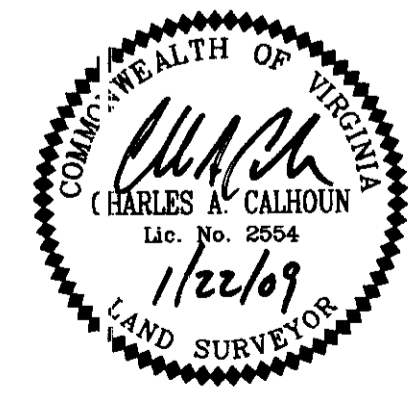
- NOTES:**
1. COMMON ELEMENT WHICH MAY BE SUBSEQUENTLY ASSIGNED AS LIMITED COMMON ELEMENT.
 2. BUILDING DIMENSIONS SHOWN HEREON ARE TO THE OUTSIDE SHEATHING LINE AND CENTER OF INTERIOR WALLS. UPPER AND LOWER (HORIZONTAL) BOUNDARIES ARE SHOWN PER ARCHITECTURAL PLANS PROVIDED BY THE DEVELOPER. REFER TO CONDOMINIUM DECLARATION FOR MORE DETAILED DESCRIPTION OF OWNERSHIP LIMITS.
 3. ALL UNITS DEPICTED HAVE BEEN SUBSTANTIALLY COMPLETED AND ARE READY FOR CUSTOM BUILD OUT, SUBJECT TO PROVISIONS OF THE DECLARATION OF TOWNE PARK CORPORATE CENTER.

SURVEYOR CERTIFICATE

I CERTIFY THAT THIS PLAT IS ACCURATE AND COMPLIES WITH THE PROVISIONS OF SECTION 55-79.58(b) OF THE CODE OF VIRGINIA OF 1950 AS AMENDED AND ALL UNITS AS SHOWN HEREON HAVE BEEN SUBSTANTIALLY COMPLETED.

Charles A. Calhoun
CHARLES A. CALHOUN DATE: 1/22/09

APPROVED: YORK COUNTY BOARD OF SUPERVISORS
BY: *Al Maddalena* DATE: 1/28/09
PLAT APPROVING AGENT



STATE OF VIRGINIA
COUNTY OF YORK
IN THE CLERK'S OFFICE OF THE CIRCUIT COURT FOR THE
COUNTY OF YORK-POQUOSON THIS 28th DAY OF Jan 2009.
THIS MAP WAS PRESENTED AND ADMITTED TO RECORD
AS THE LAW DIRECTS AS INSTRUMENT NO. 090001632
9:11 AM

TESTE: *Lynn S. Mendibur*
CLERK
BY: *Lynn S. Mendibur D.C.*

2009 JAN 29 AM 9:11