

Design File: c:\documents\cf\ms_jocaf\ref\d60843\d6084306.dgn Ref. File: c:\documents\cf\ms_jocaf\ref\d60843\d60843des.dgn Ref. File: c:\documents\cf\ms_jocaf\ref\d60843\d60843pat.dgn Ref. File: c:\documents\cf\ms_jocaf\ref\d60843\d60843sur.dgn Ref. File: c:\documents\cf\ms_jocaf\ref\d60843\d60843tbl.dgn
Levels On: I-63 40 Levels On: I-63 45 Levels On: I-63

SURVEYED BY BOB HANCOCK (1/5/12) 251-5337
SUPERVISED BY J. K. HANNA, P.E. (1/5/12) 925-2406
DESIGNED BY B. D. MCKINNA, P.E. (1/5/12) 925-3622
HAMPTON ROADS DISTRICT DESIGN UNIT

DESIGN FEATURES RELATING TO CONSTRUCTION OR TO REGULATION AND CONTROL OF TRAFFIC MAY BE SUBJECT TO CHANGE AS DEEMED NECESSARY BY THE DEPARTMENT

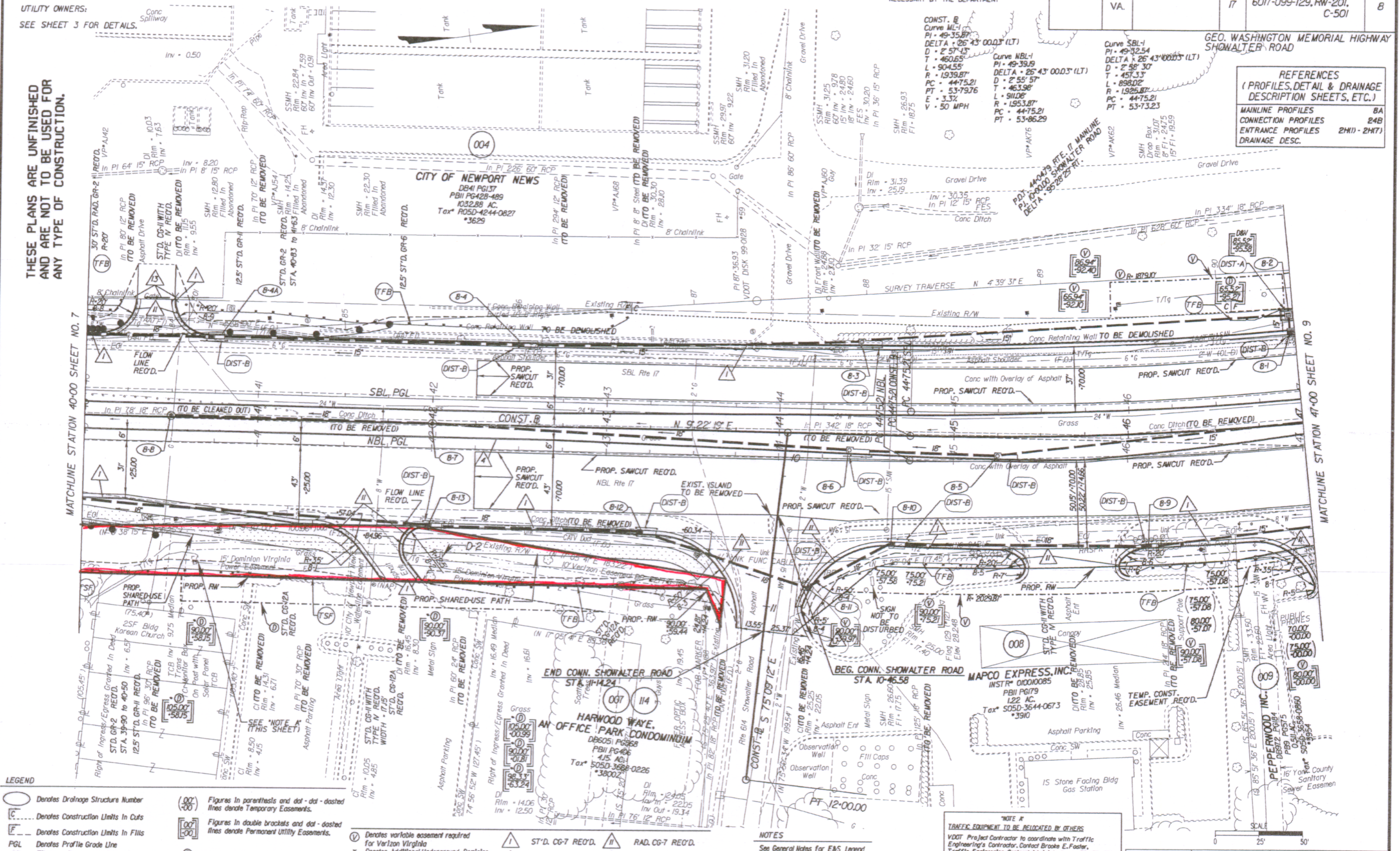
STATE	FEDERAL AID PROJECT	ROUTE	STATE PROJECT	SHEET NO.
VA.		17	6017-099-129, RW-201, C-501	8

GEO. WASHINGTON MEMORIAL HIGHWAY SHOWALTER ROAD

REFERENCES
(PROFILES, DETAIL & DRAINAGE DESCRIPTION SHEETS, ETC.)

MAINLINE PROFILES	8A
CONNECTION PROFILES	24B
ENTRANCE PROFILES	2(HI) - 2(H7)
DRAINAGE DESC.	

THESE PLANS ARE UNFINISHED AND ARE NOT TO BE USED FOR ANY TYPE OF CONSTRUCTION.



LEGEND

	Denotes Drainage Structure Number
	Denotes Construction Limits In Cuts
	Denotes Construction Limits In Fills
	Denotes Profile Grade Line
	Figures without parenthesis or brackets and solid lines denote Proposed Right of Way.
	Figures in parenthesis and dot-dashed lines denote Temporary Easements.
	Figures in double brackets and dot-dashed lines denote Permanent Utility Easements.
	Denotes variable easement required for Dominion Virginia Power
	Denotes Additional Underground Dominion Virginia Power Utility Easement Required for Parcel 114.

NOTES

	ST'D. CG-7 REQ'D.
	RAD. CG-7 REQ'D.
	ST'D. MS-2 REQ'D.
	REMOVE EXIST. FENCE & GATE; 40' STD. FENCE FE-CL & GATE FE-CL L-14' REQ'D.

NOTE A
TRAFFIC EQUIPMENT TO BE RELOCATED BY OTHERS
VDOT Project Contractor to coordinate with Traffic Engineering's Contractor, Contract Brooks E. Foster, Traffic Engineering Contract Administrator: # 804-371-2729 to schedule coordination for removal and relocation of traffic counting equipment and loops.

PLAN NO.	PROJECT	FILE NO.	SHEET NO.
	6017-099-129		8

doc instr 096005095