

LINE TABLE			LINE TABLE			LINE TABLE		
LINE	LENGTH	BEARING	LINE	LENGTH	BEARING	LINE	LENGTH	BEARING
L1	18.58'	S59°46'09"E	L11	11.55'	N23°16'13"W	L22	22.29'	S37°08'21"W
L2	93.12'	N57°20'41"E	L12	378.87'	S37°59'20"E	L23	438.24'	S15°18'31"W
L3	39.13'	S49°31'45"E	L13	24.56'	N79°29'58"E	L24	121.22'	N74°32'25"W
L4	112.72'	S09°12'59"E	L14	114.55'	N79°29'58"E	L25	222.00'	N15°17'54"E
L5	142.51'	S04°01'11"W	L15	378.87'	S37°59'20"E	L26	27.02'	N17°27'54"E
L6	12.04'	S17°32'34"W	L16	11.55'	N23°16'13"W	L27	36.00'	N15°18'31"E
L7	37.71'	N34°32'01"W	L17	51.37'	S81°56'50"E	L28	27.32'	N24°05'33"E
L8	82.53'	S63°47'04"W	L18	33.29'	N54°19'48"W	L29	18.00'	N15°18'31"E
L9	359.42'	S78°31'22"W	L19	208.64'	N19°37'22"E	L30	90.00'	N74°41'29"W
L9A	49.10'	N76°01'05"W	L20	171.18'	N59°29'52"E	L31	18.00'	S15°18'31"W
L10	275.82'	N00°00'00"E	L21	39.02'	S37°08'21"W	L32	45.19'	S39°09'03"W

CURVE TABLE						
CURVE	LENGTH	RADIUS	TANGENT	CHORD	CHORD BEARING	DELTA
C1	57.95'	235.00'	29.12'	57.80'	N11°05'04"E	14°07'44"
C2	80.57'	231.15'	40.70'	80.17'	S04°42'16"W	19°58'18"
C3	137.29'	344.50'	69.57'	136.38'	S16°50'02"E	22°49'58"
C4	23.71'	1040.50'	11.86'	23.71'	N27°35'51"W	1°18'21"
C5	17.62'	424.88'	8.81'	17.62'	N35°30'33"W	2°22'33"
C6	2.37'	174.75'	1.18'	2.37'	S34°55'19"E	0°46'33"
C7	154.70'	1049.99'	77.49'	154.56'	N19°36'15"W	8°26'29"
C8	153.36'	1049.99'	76.82'	153.22'	N11°11'57"W	8°22'06"
C9	572.93'	449.98'	332.67'	535.01'	S43°29'34"E	72°57'07"
C10	140.78'	461.94'	70.94'	140.24'	N89°19'19"E	17°27'42"
C11	419.60'	575.00'	219.63'	410.35'	N78°30'12"W	41°48'40"
C12	631.99'	706.26'	338.92'	611.12'	N31°57'45"W	51°16'16"
C13	629.76'	1360.00'	320.63'	624.15'	N13°15'56"W	26°31'53"
C14	597.99'	450.00'	352.46'	554.95'	N61°20'22"W	76°08'19"
C15	251.63'	979.50'	126.51'	250.93'	S30°37'47"E	14°43'08"
C16	602.73'	1220.50'	307.64'	596.63'	N23°50'29"W	28°17'42"
C17	610.06'	1131.47'	312.64'	602.70'	N22°32'34"W	30°53'33"
C18	274.50'	1068.53'	138.01'	273.74'	S30°37'47"E	14°43'08"
C19	479.68'	360.97'	282.72'	445.16'	N61°20'22"W	76°08'19"
C20	167.92'	550.97'	84.61'	167.27'	N89°19'19"E	17°27'42"
C21	163.42'	339.03'	83.33'	161.84'	S68°08'19"E	27°37'02"
C22	451.72'	547.02'	239.64'	439.00'	S30°40'22"E	47°18'53"
C23	87.94'	951.17'	44.00'	87.91'	N09°38'21"W	5°17'51"
C24	265.25'	951.17'	133.49'	264.39'	N20°16'37"W	15°58'41"
C25	250.15'	432.00'	128.69'	246.67'	S11°39'43"E	33°10'38"
C26	160.59'	75.00'	137.22'	131.62'	N56°24'49"W	122°40'51"
C27	36.96'	97.00'	18.71'	36.74'	S26°13'26"W	21°49'50"
C28	114.81'	151.02'	60.34'	112.06'	S06°44'13"E	43°33'19"
C29	276.20'	415.00'	143.43'	271.13'	S42°38'43"W	38°07'58"
C30	136.51'	200.00'	71.04'	133.88'	N07°15'03"E	39°06'30"
C31	196.14'	115.00'	131.64'	173.21'	N50°35'06"W	97°43'11"
C32	240.89'	393.00'	124.36'	237.14'	S10°41'26"E	35°07'11"
C33	155.84'	992.00'	78.08'	155.68'	N23°45'00"W	9°00'03"
C34	211.80'	992.00'	106.31'	211.40'	N13°07'58"W	12°14'00"
C35	419.49'	507.98'	222.54'	407.67'	S30°40'22"E	47°18'53"

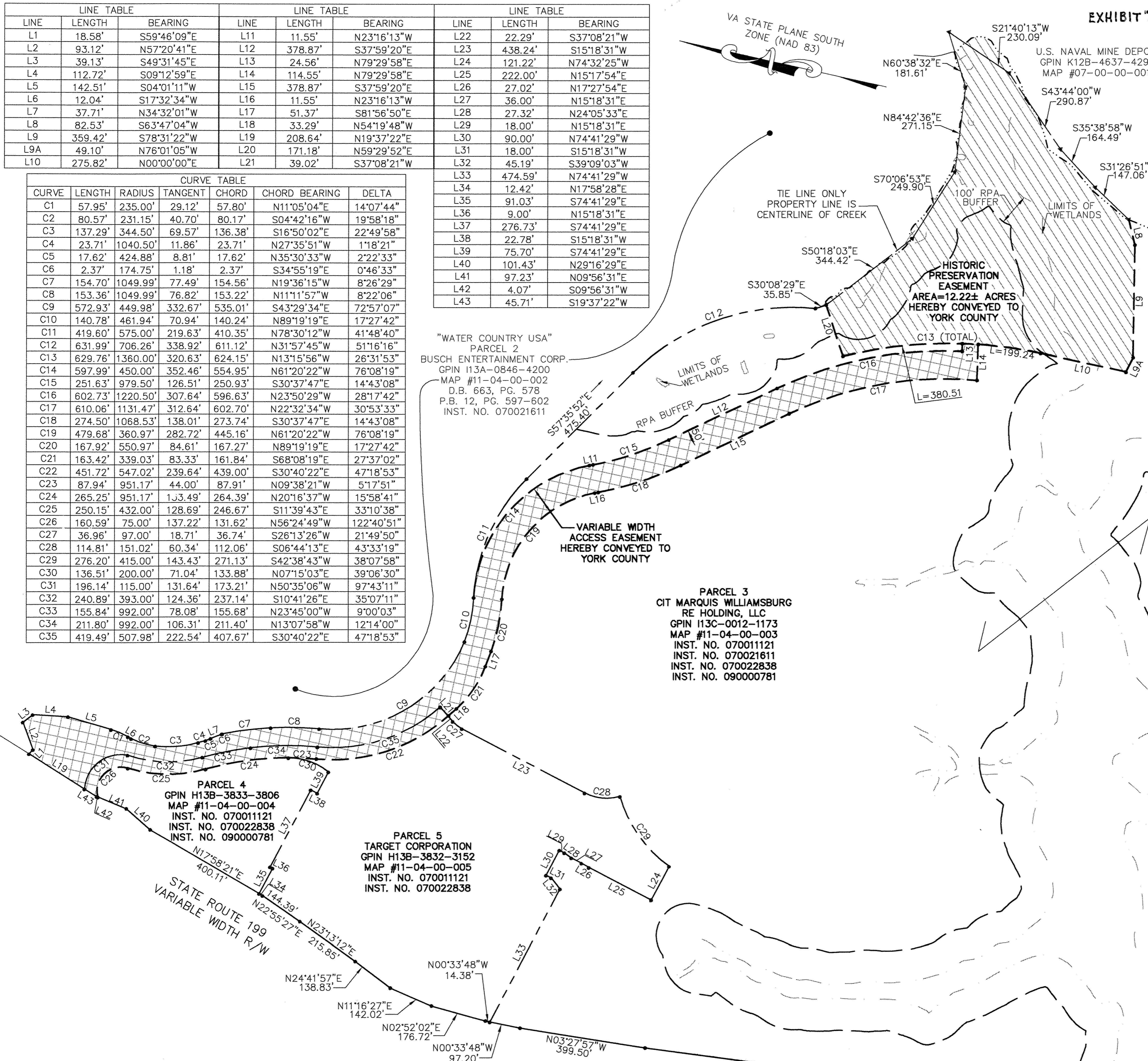
LINE	LENGTH	BEARING
L33	474.59'	N74°41'29"W
L34	12.42'	N17°58'28"E
L35	91.03'	S74°41'29"E
L36	9.00'	N15°18'31"E
L37	276.73'	S74°41'29"E
L38	22.78'	S15°18'31"W
L39	75.70'	S74°41'29"E
L40	101.43'	N29°16'29"E
L41	97.23'	N09°56'31"E
L42	4.07'	S09°56'31"W
L43	45.71'	S19°37'22"W

"WATER COUNTRY USA"
PARCEL 2
BUSCH ENTERTAINMENT CORP.
GPIN I13A-0846-4200
MAP #11-04-00-002
D.B. 663, PG. 578
P.B. 12, PG. 597-602
INST. NO. 070021611

PARCEL 3
CIT MARQUIS WILLIAMSBURG
RE HOLDING, LLC
GPIN I13C-0012-1173
MAP #11-04-00-003
INST. NO. 070011121
INST. NO. 070021611
INST. NO. 070022838
INST. NO. 090000781

PARCEL 4
GPIN H13B-3833-3806
MAP #11-04-00-004
INST. NO. 070011121
INST. NO. 070022838
INST. NO. 090000781

PARCEL 5
TARGET CORPORATION
GPIN H13B-3832-3152
MAP #11-04-00-005
INST. NO. 070011121
INST. NO. 070022838



PLAT OF EASEMENT DEDICATION
FROM
MARQUIS WILLIAMSBURG RE HOLDING LLC
AND
TARGET CORPORATION
TO
THE COUNTY OF YORK, VIRGINIA
PARCEL 3
WHITTAKERS MILL TRACT
SCALE: 1"=200' DATE: 02/10/09
BRUTON DISTRICT, YORK COUNTY, VIRGINIA
SHEET 2 OF 2



THE PROPERTY AS SHOWN ON THIS PLAT DOES NOT VIOLATE THE PROVISIONS OF THE YORK COUNTY SUBDIVISION ORDINANCE
SIGNED: *Al Maddalena*
TITLE: Chief of Development & Compliance
DATE: 6/23/09

APPROVED:
YORK COUNTY BOARD OF SUPERVISORS
BY: _____
PLAT APPROVING AGENT
DATE: _____
STATE OF VIRGINIA, COUNTY OF YORK
IN THE CLERK'S OFFICE OF THE CIRCUIT COURT FOR THE COUNTY OF YORK-POQUOSON THE 24th DAY OF June 2009, THIS MAP WAS PRESENTED AND ADMITTED TO RECORD AS THE LAW DIRECTS AS INSTRUMENT NO. 0900128!!
TESTE: *Lynn S. Mendibur*
CLERK
BY: *Valerie J. Baldwin, D.C.*