

LINE	LENGTH	BEARING
L1	91.03'	S74°41'29"E
L2	9.00'	N15°18'31"E
L3	276.73'	S74°41'29"E
L4	22.78'	S15°18'31"W
L5	75.70'	S74°41'29"E
L6	4.07'	N09°56'31"E
L7	45.71'	N19°37'22"E
L8	61.31'	S37°08'21"W
L9	438.24'	S15°18'31"W
L10	121.22'	N74°32'25"W
L11	222.00'	N15°17'54"E
L12	27.02'	N17°27'54"E
L13	36.00'	N15°18'31"E
L14	27.32'	N24°05'33"E
L15	18.00'	N15°18'31"E
L16	90.00'	N74°41'29"W
L17	18.00'	S15°18'31"W
L18	45.19'	S39°09'03"W

CURVE	LENGTH	RADIUS	TANGENT	CHORD	CHORD BEARING	DELTA
C1	136.51'	200.00'	71.04'	133.88'	N07°15'03"E	39°06'30"
C2	265.25'	951.17'	133.49'	264.39'	N20°16'37"W	15°58'41"
C3	250.15'	432.00'	128.69'	246.67'	S11°39'43"E	33°10'38"
C4	160.59'	75.00'	137.22'	131.62'	N56°24'49"W	122°40'51"
C5	196.14'	115.00'	131.64'	173.21'	N50°35'06"W	97°43'11"
C6	240.89'	393.00'	124.36'	237.14'	S10°41'26"E	35°07'11"
C7	155.84'	992.00'	78.08'	155.68'	N23°45'00"W	9°00'03"
C8	211.80'	992.00'	106.31'	211.40'	N13°07'58"W	12°14'00"
C9	419.49'	507.98'	222.54'	407.67'	S30°40'22"E	47°18'53"
C10	36.96'	97.00'	18.71'	36.74'	S26°13'26"W	21°49'50"
C11	114.81'	151.02'	60.34'	112.06'	S06°44'13"E	43°33'19"
C12	276.20'	415.00'	143.43'	271.13'	S42°38'43"W	38°07'58"

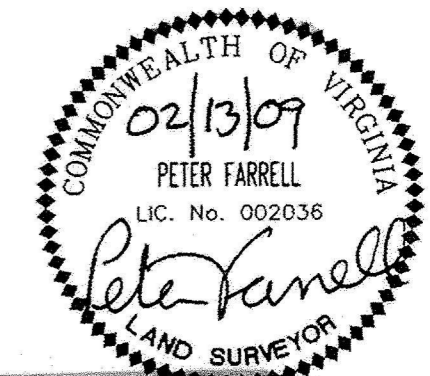
LINE	LENGTH	BEARING
E1	5.81'	S72°02'13"E
E2	308.36'	S53°11'24"E
E3	219.60'	S22°05'24"E
E4	383.18'	S02°15'50"E
E5	253.76'	S26°41'16"W
E6	130.00'	S26°41'16"W
E7	337.36'	S20°17'10"E
E8	205.27'	S35°21'15"W
E9	200.45'	S35°21'15"W
E18	32.95'	S74°19'27"E
E19	153.80'	S14°54'47"E
E20	118.96'	S15°30'49"W
E21	126.56'	S04°05'47"W
E22	88.03'	S26°53'00"W
E23	118.96'	S15°35'49"W
E24	189.98'	S15°00'55"W
E27	60.03'	N88°55'10"E
E28	145.22'	N17°26'07"E
E29	220.00'	S74°46'03"E

PLAT SHOWING UTILITY EASEMENT
AND DRAINAGE EASEMENT
PARCEL 5
THE MARQUIS AT WILLIAMSBURG
BRUTON DISTRICT, YORK COUNTY, VIRGINIA
TO BE CONVEYED TO
THE COUNTY OF YORK
BY
TARGET CORPORATION
DATE: 11/21/08 SCALE: 1"=100'
REVISED: 02/13/09

SHEET 2 OF 2

LANDMARK
DESIGN GROUP

Engineers • Planners • Surveyors
Landscape Architects • Environmental Consultants
4029 IRONBOUND ROAD SUITE 100
WILLIAMSBURG, VIRGINIA 23188
(757) 253-2975 FAX: (757) 229-0049



THE PROPERTY AS DEPICTED ON THIS MAP DOES NOT VIOLATE THE PROVISIONS OF THE YORK COUNTY SUBDIVISION ORDINANCE
Signed: *Al Maddalena*
Title: Chief of Development & Compliance
Date: 6/23/09

LEGEND

EXISTING YORK COUNTY DRAINAGE AND UTILITY EASEMENT (SANITARY SEWER)

*10.95' DISTANCE FROM EASEMENT CENTERLINE TO PARCEL 5 BOUNDARY

APPROVED:
YORK COUNTY BOARD OF SUPERVISORS

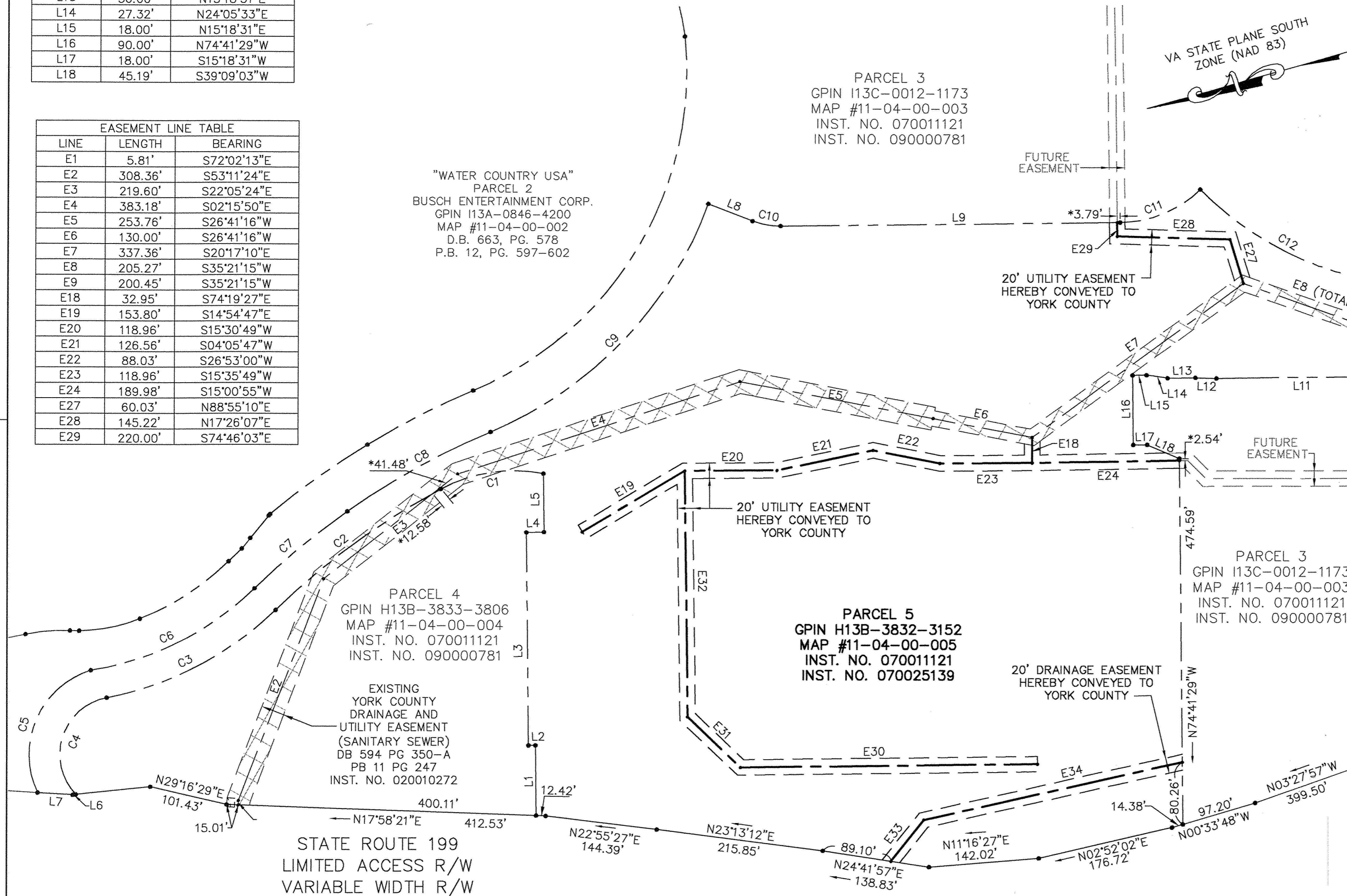
BY: _____
PLAT APPROVING AGENT

DATE: _____

STATE OF VIRGINIA, COUNTY OF YORK
IN THE CLERK'S OFFICE OF THE CIRCUIT COURT FOR THE COUNTY OF YORK-POQUOSON THE 24th DAY OF June 2009, THIS MAP WAS PRESENTED AND ADMITTED TO RECORD AS THE LAW DIRECTS AS INSTRUMENT NO. 090012813

TESTE: *Lynn S. Mendibur*
CLERK

BY: *Valentin P. Pabluw D.C.*



LINE	LENGTH	BEARING
E30	383.06'	N15°15'35"E
E31	94.62'	N59°32'47"E
E32	319.67'	S74°47'51"E
E33	67.97'	S35°48'28"E
E34	341.96'	S03°17'03"W