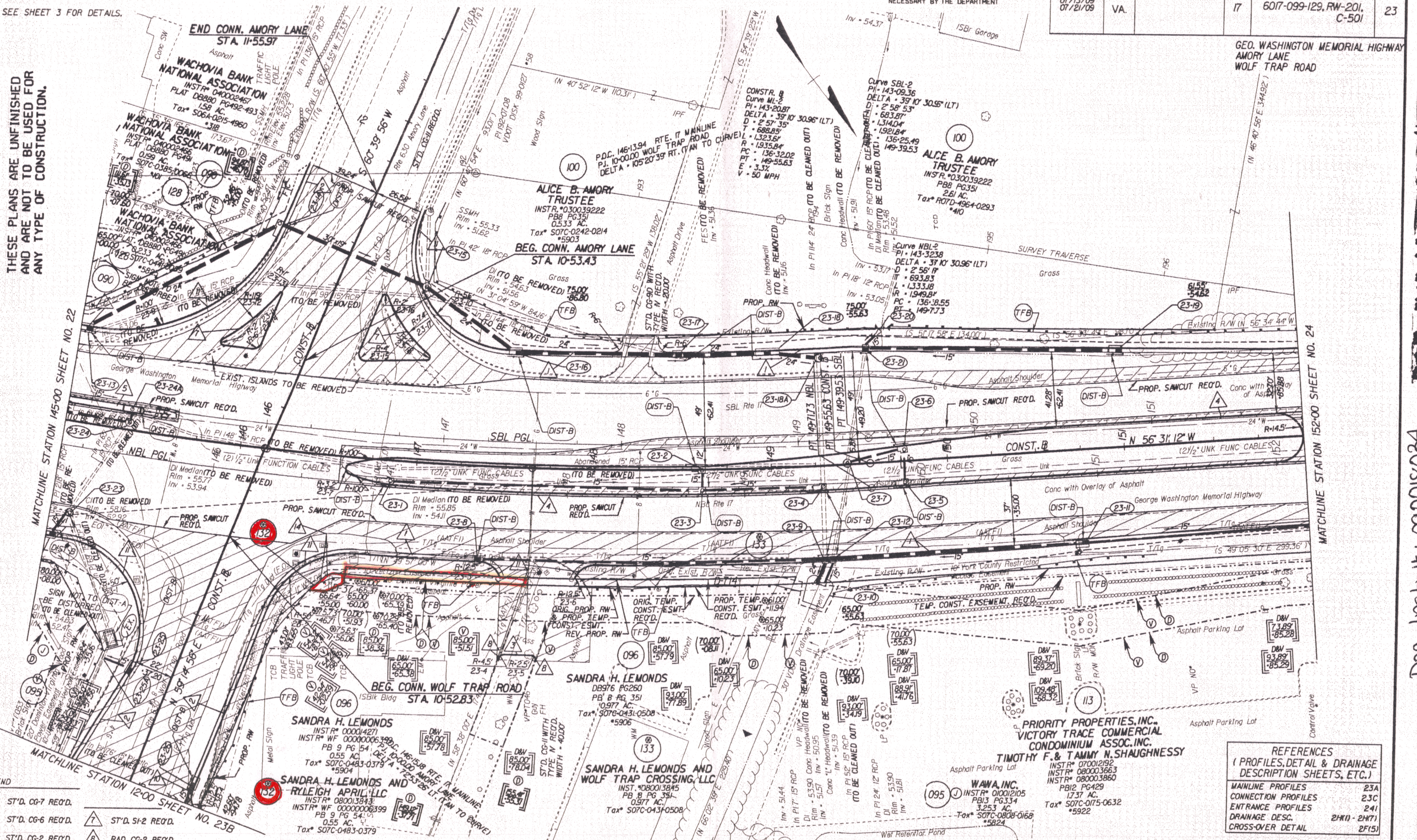


DESIGNED BY B.H. HARMON 1/5/01 253-5317
 REVISIONS BY J.K. HAYNAM, P.E. (757) 925-2406
 DRAWN BY K.D. WICKHAM, P.E. (757) 925-3622
 WYOMING ROADS DISTRICT DESIGN UNIT
 UTILITY OWNERS:
 SEE SHEET 3 FOR DETAILS.

THESE PLANS ARE UNFINISHED
 AND ARE NOT TO BE USED FOR
 ANY TYPE OF CONSTRUCTION.

DESIGN FEATURES RELATING TO CONSTRUCTION OR TO REGULATION AND CONTROL OF TRAFFIC MAY BE SUBJECT TO CHANGE AS DEEMED NECESSARY BY THE DEPARTMENT

REVISED	STATE	FEDERAL AID	ROUTE	STATE	PROJECT	SHEET NO.
03/23/06 05/29/07 12/16/08 07/13/09 07/21/09	VA.		17		6017-099-129, RW-201, C-501	23



END

ST'D. CG-7 REQ'D.	ST'D. S1-2 REQ'D.
ST'D. CG-6 REQ'D.	RAD. CG-2 REQ'D.
ST'D. CG-2 REQ'D.	RAD. CG-6 REQ'D.
ST'D. MS-2 REQ'D.	

Denotes Construction Limits In Cuts
 Denotes variable easement required for various utilities
 Denotes Additional Utility Easement Required for Parcel 128
 Figures without parentheses or brackets and only those shown on the Proposed Plan of
 Denotes Areas Of Demolition of

REFERENCES
 (PROFILES, DETAIL & DRAINAGE DESCRIPTION SHEETS, ETC.)

MAINLINE PROFILES	23A
CONNECTION PROFILES	23C
ENTRANCE PROFILES	241
DRAINAGE DESC.	24(H) - 24(I)
CROSS-OVER DETAIL	2F(5)

Matchline Station 145+00 Sheet No. 22
 Matchline Station 152+00 Sheet No. 24
 Doc Instr #: 09001803A