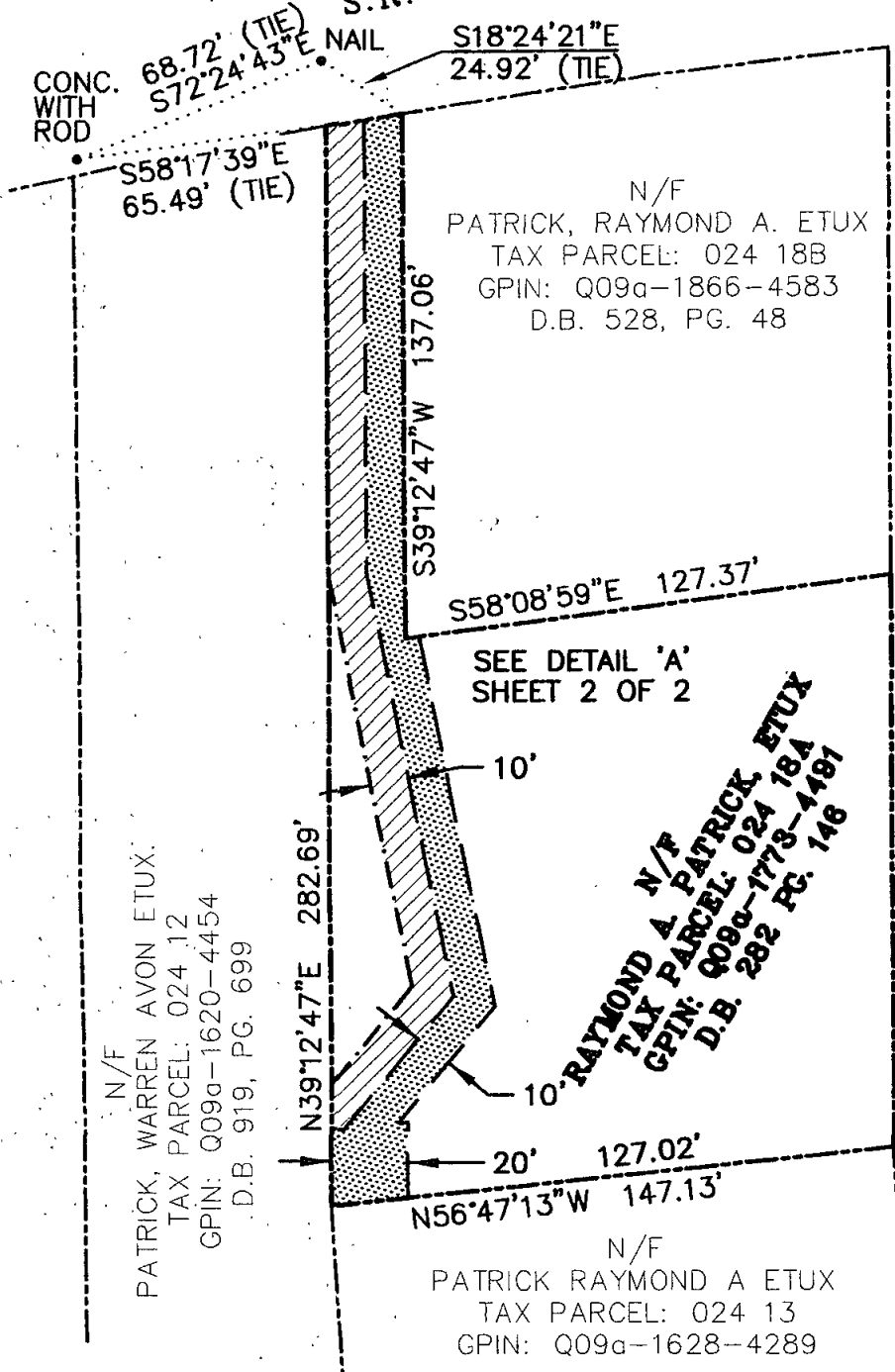


000000207

OLD YORK-HAMPTON HIGHWAY
S.R. 634 (VAR. WIDTH R/W)

THE VIRGINIA STATE
PLANE COORDINATE SYSTEM
1983 (NAD83) SOUTH ZONE
COUNTY OF YORK
GEODETIC CONTROL NETWORK



20' COUNTY ROAD (UNIMPROVED)

- DENOTES VARIABLE WIDTH PERMANENT UTILITY EASEMENT HEREBY CONVEYED TO THE COUNTY OF YORK. AREA = 3,128 SQ.FT.
- DENOTES 5' WIDE TEMPORARY CONSTRUCTION EASEMENT HEREBY CONVEYED TO THE COUNTY OF YORK. AREA = 2,704 SQ.FT.

SHEET 1 OF 2

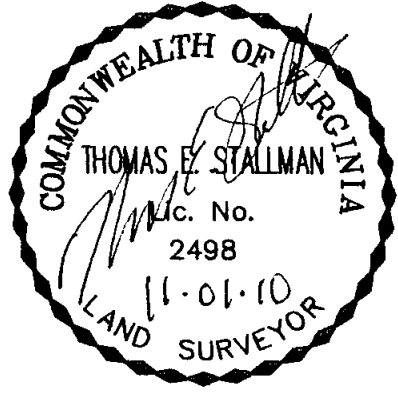
NOTES:

THE PROPERTY DELINEATED ON THIS PLAT IS LOCATED AT 2303 OLD YORK-HAMPTON HIGHWAY AND COUNTY OF YORK TAX ASSESSMENT MAP NO. 024 18A AND IS CURRENTLY ZONED R20.

THIS PLAT WAS PREPARED WITHOUT THE BENEFIT OF A TITLE REPORT. THEREFORE, ALL ENCUMBRANCES TO THE PROPERTY ARE NOT NECESSARILY SHOWN HEREON.

THE BOUNDARY INFORMATION SHOWN ON THIS PLAT WAS COMPILED FROM EXISTING LAND RECORDS AND CURRENT FIELD MEASUREMENTS AND REPRESENTS AN ACTUAL FIELD SURVEY. THIS PLAT DOES NOT REPRESENT A BOUNDARY SURVEY.

HORIZONTAL COORDINATE INFORMATION IS BASED ON THE VIRGINIA STATE PLANE COORDINATE SYSTEM SOUTH ZONE (NAD 83), UNITS ARE IN SURVEY FEET. COUNTY OF YORK GEODETIC CONTROL NETWORK STATIONS 56 AND 59 USED FOR THIS PROJECT.



PLAT OF EASEMENT
FROM
RAYMOND A. PATRICK,
ETUX
TO
COUNTY OF YORK
FALCON LOBLOLLY SANITARY
VACUUM SEWER PROJECT



DATE: 11-01-2010 SCALE: 1" = 50'

rad Engineers, Surveyors
Construction Managers
716 J. Clyde Morris Boulevard, Suite A
Newport News, Virginia 23601
757.596.4005
NXL J.O.: 09-11-029L