

000000362

OLD YORK-HAMPTON HIGHWAY
S.R. 634 (VAR WIDTH R/W)

THE VIRGINIA STATE
PLANE COORDINATE SOUTH
SYSTEM 1983 (NAD83)
COUNTY OF YORK
GEODETIC CONTROL NETWORK

S49°20'55"E

5' TEMPORARY
CONSTRUCTION
EASEMENT.
AREA = 155 SQ.FT.

5' TEMPORARY
CONSTRUCTION
EASEMENT.
AREA = 155 SQ.FT.

SEE DETAIL 'A'

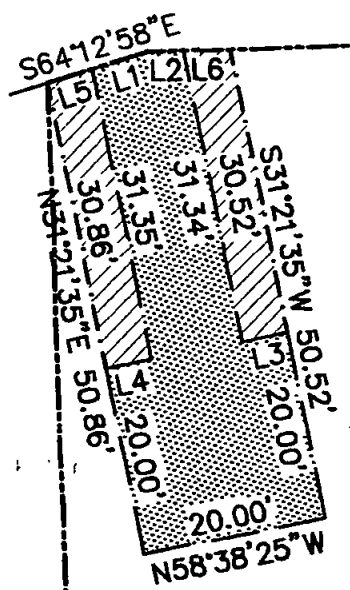
N/F
OVERBEY, GREGORY ALAN
TAX PARCEL: 0241 1A 13
CPIN: Q090-2605-4034
INSTR. #080025827

N/F
ROBERT A. K. WHITE, ETUX
TAX PARCEL: 024 18
CPIN: Q096-2621-3870
INSTR. #090019137

N/F
REDMAN, MARK ETUX.
TAX PARCEL: 0241 1A 12
CPIN: Q090-2510-3944
D.B. 1083, PG. 92

N/F
EDLOW, ANNIE B. EST.
TAX PARCEL: 024 17
CPIN: Q096-2557-3549
W.B. 93, Pg. 299

LINE	BEARING	DISTANCE
L1	S64°12'58"E	6.25'
L2	S49°20'55"E	3.83'
L3	S58°38'25"E	5.00'
L4	N58°38'25"W	5.00'
L5	S64°12'58"E	5.07'
L6	S49°20'55"E	5.07'



DETAIL 'A'
SCALE: 1" = 20'

- DENOTES VARIABLE WIDTH PERMANENT UTILITY EASEMENT HEREBY CONVEYED TO THE COUNTY OF YORK. AREA = 717 SQ.FT.
- DENOTES 5' WIDE TEMPORARY CONSTRUCTION EASEMENT HEREBY CONVEYED TO THE COUNTY OF YORK. AREA = 310 SQ.FT.

NOTES:
THE PROPERTY DELINEATED ON THIS PLAT IS LOCATED AT 2105 OLD YORK-HAMPTON HIGHWAY AND COUNTY OF YORK TAX ASSESSMENT MAP NO. 024 18 AND IS CURRENTLY ZONED R20.

THIS PLAT WAS PREPARED WITHOUT THE BENEFIT OF A TITLE REPORT. THEREFORE, ALL ENCUMBRANCES TO THE PROPERTY ARE NOT NECESSARILY SHOWN HEREON.

THE BOUNDARY INFORMATION SHOWN ON THIS PLAT WAS COMPILED FROM EXISTING LAND RECORDS AND CURRENT FIELD MEASUREMENTS AND REPRESENTS AN ACTUAL FIELD SURVEY. THIS PLAT DOES NOT REPRESENT A BOUNDARY SURVEY.

HORIZONTAL COORDINATE INFORMATION IS BASED ON THE VIRGINIA STATE PLANE COORDINATE SYSTEM SOUTH ZONE (NAD 83), UNITS ARE IN SURVEY FEET. COUNTY OF YORK GEODETIC CONTROL NETWORK STATIONS 56 AND 59 USED FOR THIS PROJECT.



PLAT OF EASEMENTS
FROM
ROBERT A. K. WHITE, ETUX

TO
COUNTY OF YORK
FALCON LOBLOLLY SANITARY
VACUUM SEWER PROJECT



DATE: 11-30-2010 SCALE: 1" = 40'

msd Engineers, Surveyors
Construction Managers
716 J. Clyde Morris Boulevard, Suite A
Newport News, Virginia 23601
757. 596. 4005
NXL J.O.: 09-11-029L