

PLAT OF BOUNDARY LINE ADJUSTMENT
PARCEL "A" OWNED BY
CASEY AND ASSOCIATES, L.P.
AND PARCEL "B" OWNED BY
ROCHAMBEAU PROPERTY, LLC

BRUTON DISTRICT YORK COUNTY VIRGINIA
Date: 04/28/11 Scale: 1"=100' Proj. No.: 9645-04 Proj. Contacts: TCS/JFS



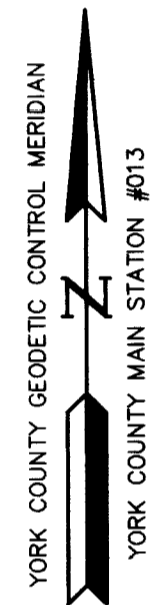
5248 Old Towne Road, Suite 1
Williamsburg, Virginia 23188
Phone: (757) 253-0040
Fax: (757) 220-8994
www.aesva.com

SHEET 2 OF 2

GRAPHIC SCALE



SCALE: 1" = 100'



NOTE: NORTHING AND EASTING
COORDINATE VALUES AS SHOWN ARE
FOR GIS PURPOSES ONLY!

LEGEND

- PROPERTY LINE
- - - RIGHT-OF-WAY LINE
- - - EASEMENT
- RAW MONUMENT SET
- CMF CONCRETE MONUMENT FOUND
- IRS IRON ROD SET
- IRF IRON ROD FOUND
- IPF IRON PIPE FOUND
- WMP WATERSHED MANAGEMENT AND PROTECTION AREA OVERLAY DISTRICT
- B.S.L. BUILDING SETBACK LINE
- N/F NOW / FORMERLY

APPROVED
YORK COUNTY BOARD OF SUPERVISORS

BY: Al. Maddalena
PLAT APPROVING AGENT

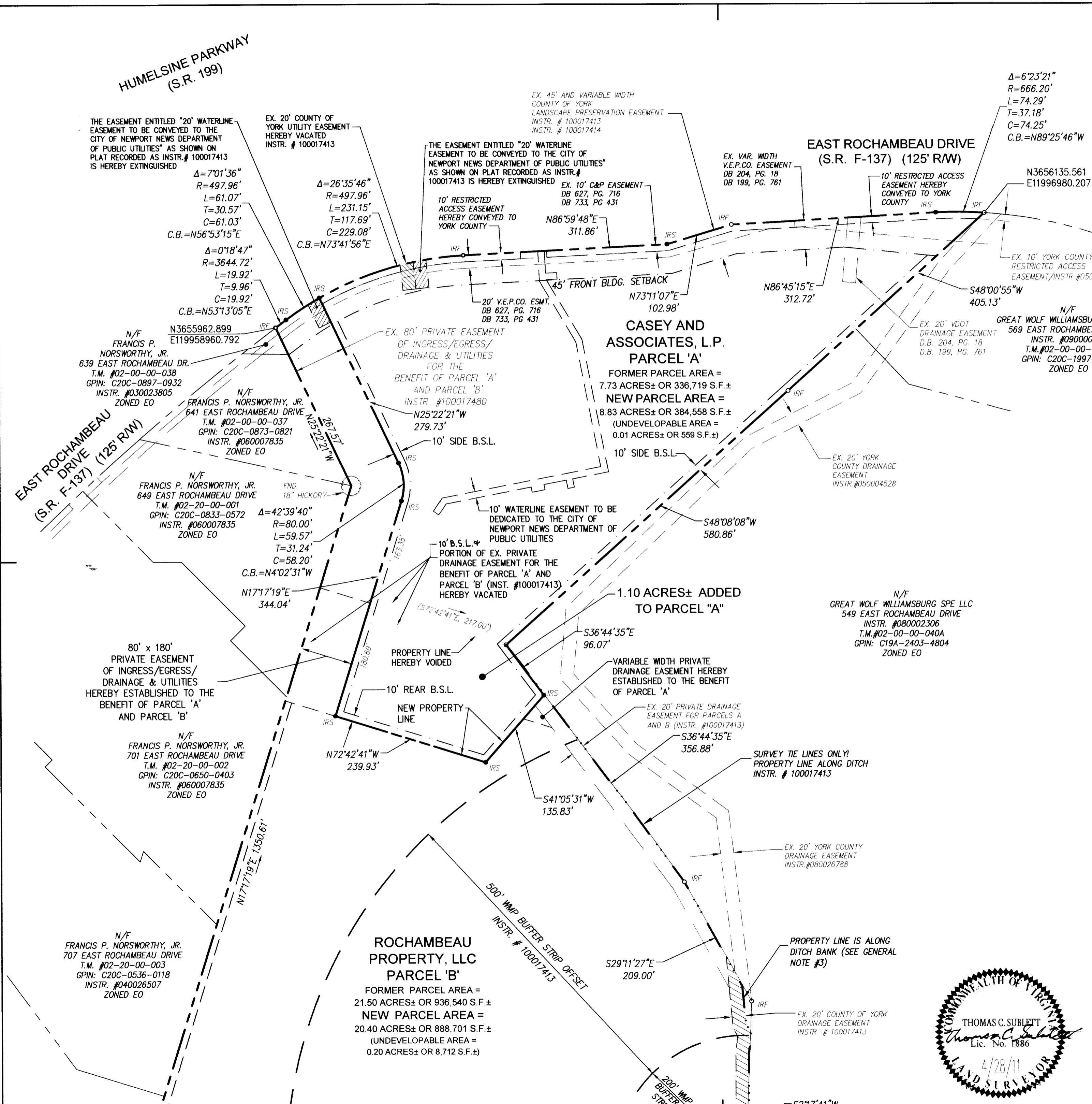
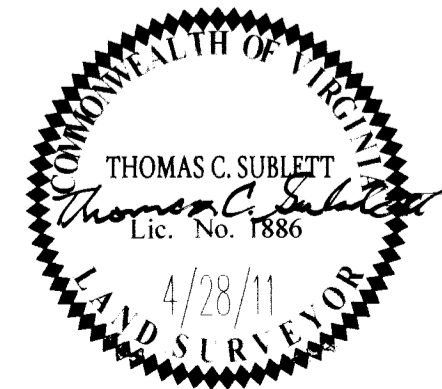
DATE: 8/3/11

STATE OF VIRGINIA
COUNTY OF YORK

IN THE CLERK'S OFFICE OF THE CIRCUIT COURT FOR THE COUNTY OF
YORK-POQUOSON THE 28 DAY OF August, 2011
THIS MAP WAS PRESENTED FOR RECORD AS THE LAW DIRECTS, AS
INSTRUMENT NO. 40012069 @ 9:16am

TESTE: Lynn S. Mendibour CLERK

BY: [Signature]



2011 AUG 26 AM 9:17