

CONDOMINIUM PLAT OF  
**MICHAEL COMMONS, PHASE III,**  
 BUILDING NO. 13, SUITE B BUILDING NO. 14, SUITE B  
 BUILDING NO. 16, SUITE C BUILDING NO. 20, SUITE A  
 BUILDING NO. 21, SUITE C BUILDING NO. 22, SUITE A

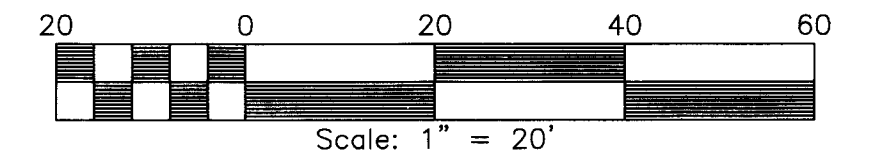
Bruton District, York County, Virginia

PROJECT #07-034 DATE: 01/10/2013  
 (REF #05-122 & 06-028)

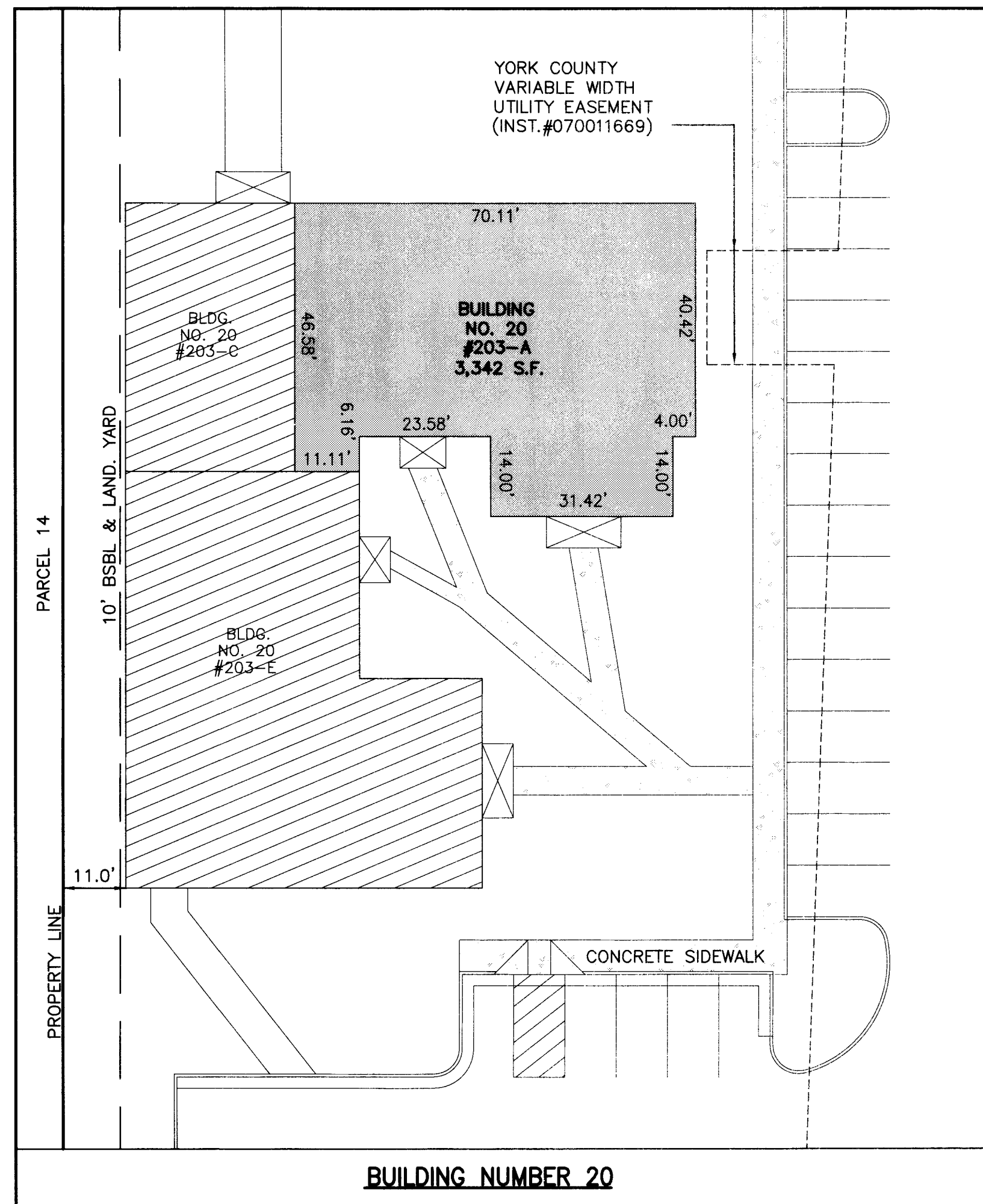
**LandTech Resources, Inc.**

Surveying • Mapping • GPS  
 205-E Bulifants Boulevard, Williamsburg, Virginia 23188  
 Telephone: 757-565-1677 Fax: 757-565-0782  
 Web: landtechresources.com

**SHEET 5 OF 7**



CONDOMINIUM PLAN SHOWING  
**BUILDING NO. 20, SUITE A**



**BUILDING NUMBER 20**

1-STORY BRICK  
 BLDG #203-A

**SUITE A**  
 3,342 S.F.

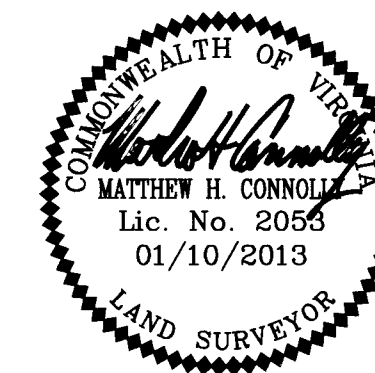
TOTAL AREA = 8,517 S.F.

NOTE:  
 THE INTERIOR OF SUITE #203-A WAS FINISHED AT THE TIME OF THIS SURVEY. THE BUILDING DIMENSIONS AND AREA SHOWN HEREON WERE TAKEN FROM ARCHITECTURAL DRAWINGS AND WERE PARTIALLY FIELD VERIFIED.

THIS PLAN IS IN ACCORDANCE WITH THE DECLARATION OF MICHAEL COMMONS, PHASE I, A CONDOMINIUM DATED JULY 18, 2003 AND RECORDED AS INSTRUMENT # 030021937 AND CORRECTED IN INSTRUMENT # 080027398

I CERTIFY THAT THIS PLAN IS ACCURATE AND COMPLIES WITH THE PROVISIONS OF SECTION 55-79.58(b) OF THE CODE OF VIRGINIA 1950 AS AMENDED AND THAT UNIT 203-A AS DEPICTED HEREON HAS BEEN SUBSTANTIALLY COMPLETED.

ALL BUILDING DIMENSIONS SHOWN HEREON ARE INTERIOR WALL DIMENSIONS AND ARE IN FEET.



**LEGEND**

- LCE = LIMITED COMMON ELEMENT
- ☒ = COVERED PORCH

APPROVED: YORK COUNTY BOARD OF SUPERVISORS  
 BY: 111 To add date DATE: 2/10/13  
 PLAT APPROVING AGENT

STATE OF VIRGINIA  
 COUNTY OF YORK  
 IN THE CLERK'S OFFICE OF THE CIRCUIT COURT FOR THE COUNTY OF YORK-POQUOSON THIS 25th DAY OF February 2013.  
 THIS MAP WAS PRESENTED AND ADMITTED TO RECORD AS THE LAW DIRECTS AS INSTRUMENT NO. 130003625

TESTE: Lynn S. Meddibur  
 CLERK

BY: Matthew H. Connolly

NOTE:  
 SEE SUPPLEMENTAL CONDOMINIUM PLANS RECORDED WITH CORRECTIVE SUPPLEMENTAL DECLARATION AT INSTRUMENT NO. 080027398 FOR BUILDING SECTIONS AND ELEVATIONS FOR MICHAEL COMMONS PHASE I, PHASE II AND PHASE III