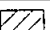

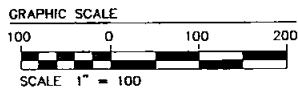
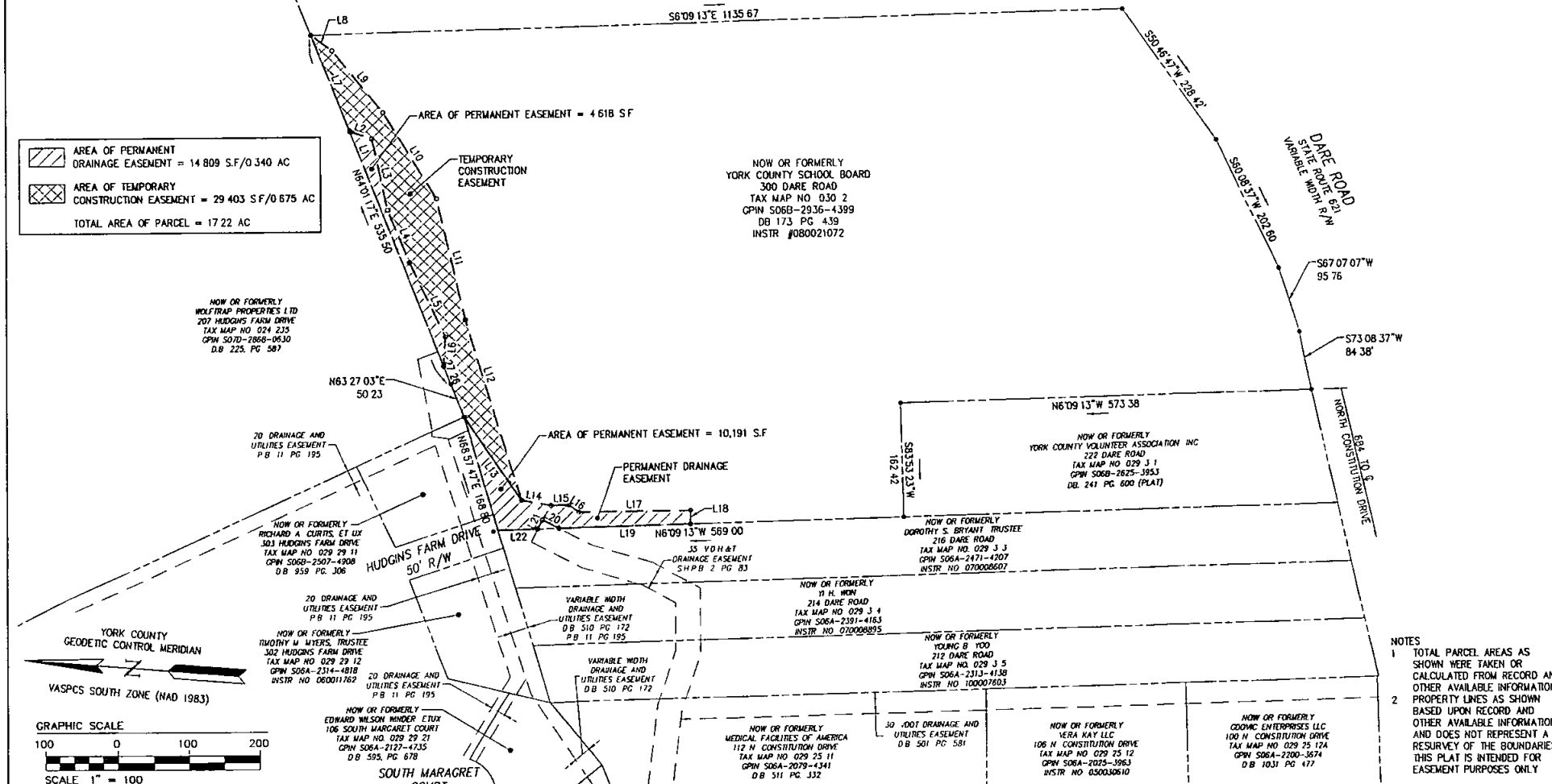
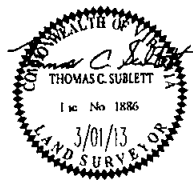


LINE TABLE		LINE TABLE		LINE TABLE	
LINE	BEARING	LENGTH	LINE	BEARING	LENGTH
L1	N64°01'17"E	359.79	L9	S46°48'01"W	114.23
L2	S14°15'41"W	32.73	L10	S54°06'38"W	143.65
L3	S73°15'52"W	104.21	L11	S72°11'37"W	177.02
L4	S63°03'48"W	80.86	L12	S68°27'20"W	269.65
L5	S60°05'46"W	117.05	L13	N51°27'30"E	143.96
L6	S88°47'23"W	42.03	L14	S52°43'55"W	41.79
L7	N64°01'17"E	148.45	L15	S4°58'36"E	25.55
L8	S32°35'52"W	36.99	L16	S30°30'45"W	17.23

 AREA OF PERMANENT DRAINAGE EASEMENT = 14 809 S.F./0.340 AC  
 AREA OF TEMPORARY CONSTRUCTION EASEMENT = 29 403 S.F./0.675 AC  
 TOTAL AREA OF PARCEL = 17.22 AC



Rev	Date	Description	Revised By



**AES**  
CONSULTING ENGINEERS

5248 Old Towne Road, Suite 1  
Williamsburg, Virginia 23185  
Phone (757) 253-0040  
Fax (757) 220-8594  
www.aesva.com

Hampton Roads | Central Virginia | Middle Peninsula

PLAT OF EASEMENT CONVEYANCE  
FROM YORK COUNTY SCHOOL BOARD  
TO THE COUNTY OF YORK, VIRGINIA  
PROJECT DARE ELEMENTARY SCHOOL

GRAFTON DISTRICT      COUNTY OF YORK      VIRGINIA

Project Contacts	TCS
Project Number	W10228-P04
Scale	Date
1"=100'	3/01/13
Sheet Number	
1	

NOTES

- TOTAL PARCEL AREAS AS SHOWN WERE TAKEN OR CALCULATED FROM RECORD AND OTHER AVAILABLE INFORMATION.
- PROPERTY LINES AS SHOWN BASED UPON RECORD AND OTHER AVAILABLE INFORMATION AND DOES NOT REPRESENT A RESURVEY OF THE BOUNDARIES. THIS PLAT IS INTENDED FOR EASEMENT PURPOSES ONLY.

1700000877

S:\00a\W10228\00 Dare\Elem\Drainage\Survey\Plats\W10228-P04.dwg 3/1/2013 11:14:38 AM steve cooke