

EXHIBIT "C"
 PLAT OF
YORKTOWN COMMERCE CENTER
A CONDOMINIUM
 PHASE 2
 YORKTOWN, VIRGINIA
 NELSON MAGISTERIAL DISTRICT

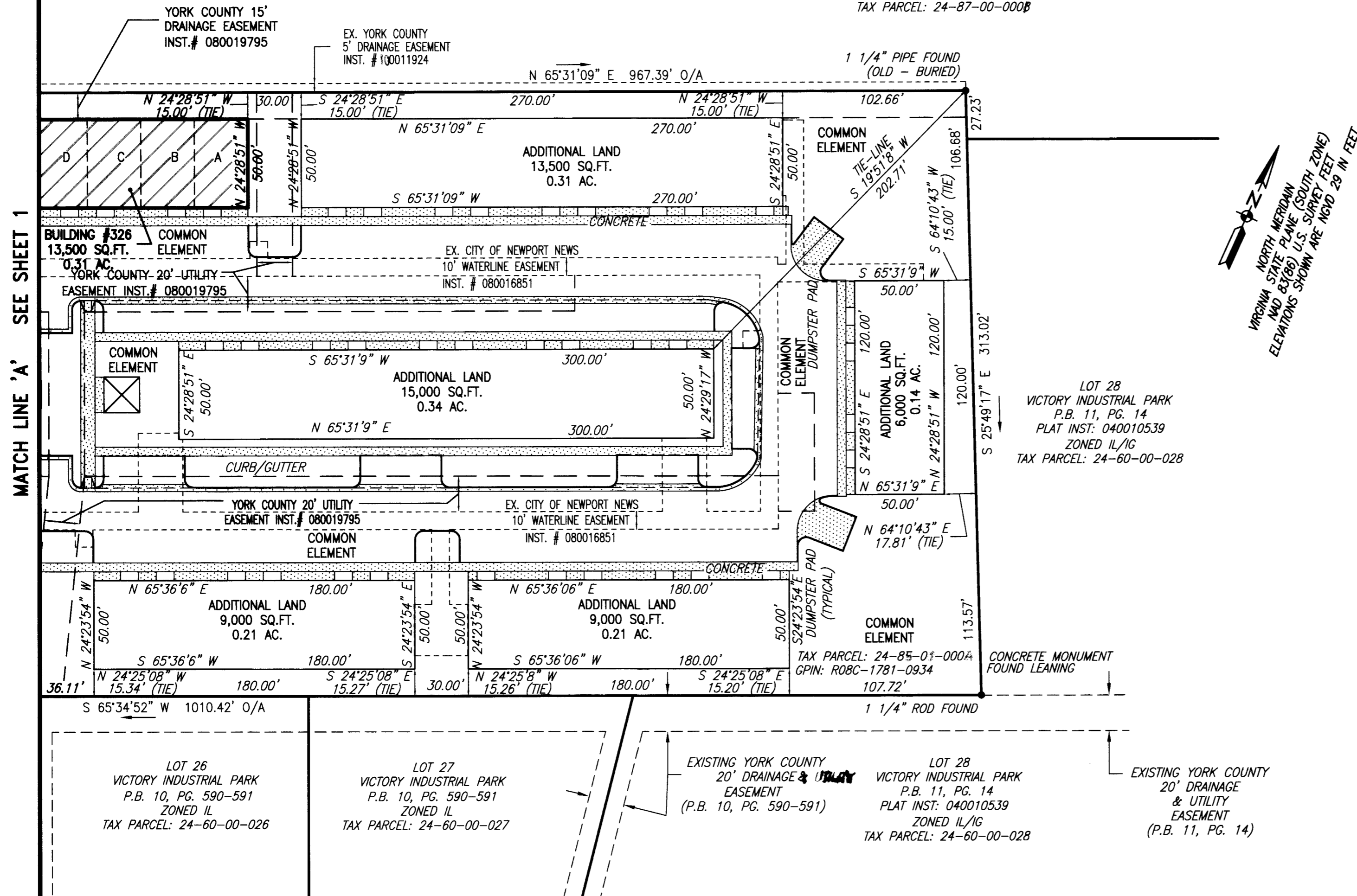
50 0 50 100
 scale feet
 SCALE: 1"=50'

DATE: 4/23/13
 REV: 5/23/13
 JOB# 3311.0-13

PARRISH LAYNE
DESIGN GROUP
 Engineers • Surveyors • Planners
 P.O. Box 9164, Chesapeake, VA 23321
 Phone: 757.686.3345 Fax: 757.686.3348

SHEET 2 OF 3

NOW OR FORMERLY
 ECONOMIC DEVELOPMENT AUTHORITY OF YORK COUNTY
 PLAT INSTR# - 100011924
 ZONED IG
 TAX PARCEL: 24-87-00-000B



MATCH LINE 'A' SEE SHEET 1

I CERTIFY THAT THIS PLAT IS ACCURATE AND COMPLIES WITH THE PROVISIONS OF SECTION 55-79.58(a) OF THE CODE OF VIRGINIA OF 1950 AS AMENDED AND ALL UNITS SHOWN HEREON HAVE BEEN SUBSTANTIALLY COMPLETED.



LEGEND

- PIN FOUND (UNLESS NOTED OTHERWISE)
- DENOTES MONUMENT FOUND
- EXISTING DRAINAGE EASEMENT
- - - - EXISTING NEWPORT NEWS UTILITY EASEMENT (INST# 080016851)
- ▨ CONCRETE SIDEWALK

APPROVED:
YORK COUNTY BOARD OF SUPERVISORS

BY: [Signature]
 PLAT APPROVING AGENT

DATE: 5/23/13

STATE OF VIRGINIA
 COUNTY OF YORK
 IN THE CLERK'S OFFICE OF THE CIRCUIT COURT FOR THE COUNTY OF YORK-POQUOSON THIS 23rd DAY OF MAY 2013, THIS PLAT WAS PRESENTED AND ADMITTED TO RECORD AS THE LAW DIRECTS AS INSTRUMENT NO. 24-13040-9743

TESTE: [Signature]
 CLERK

BY: [Signature]

2013 MAY 23 PM 2:55