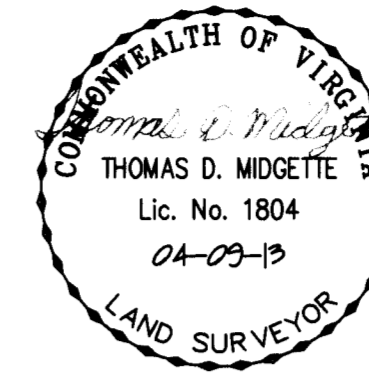


N/F  
THE QUARTERS OF YORK COUNTY  
COMMUNITY ASSOCIATION, INC.  
INST. # 050021232  
PHASE I, COMMON AREA A  
G PIN Q08b-3633-2906  
TAX MAP 24-84-01-000A  
ZONED RMF

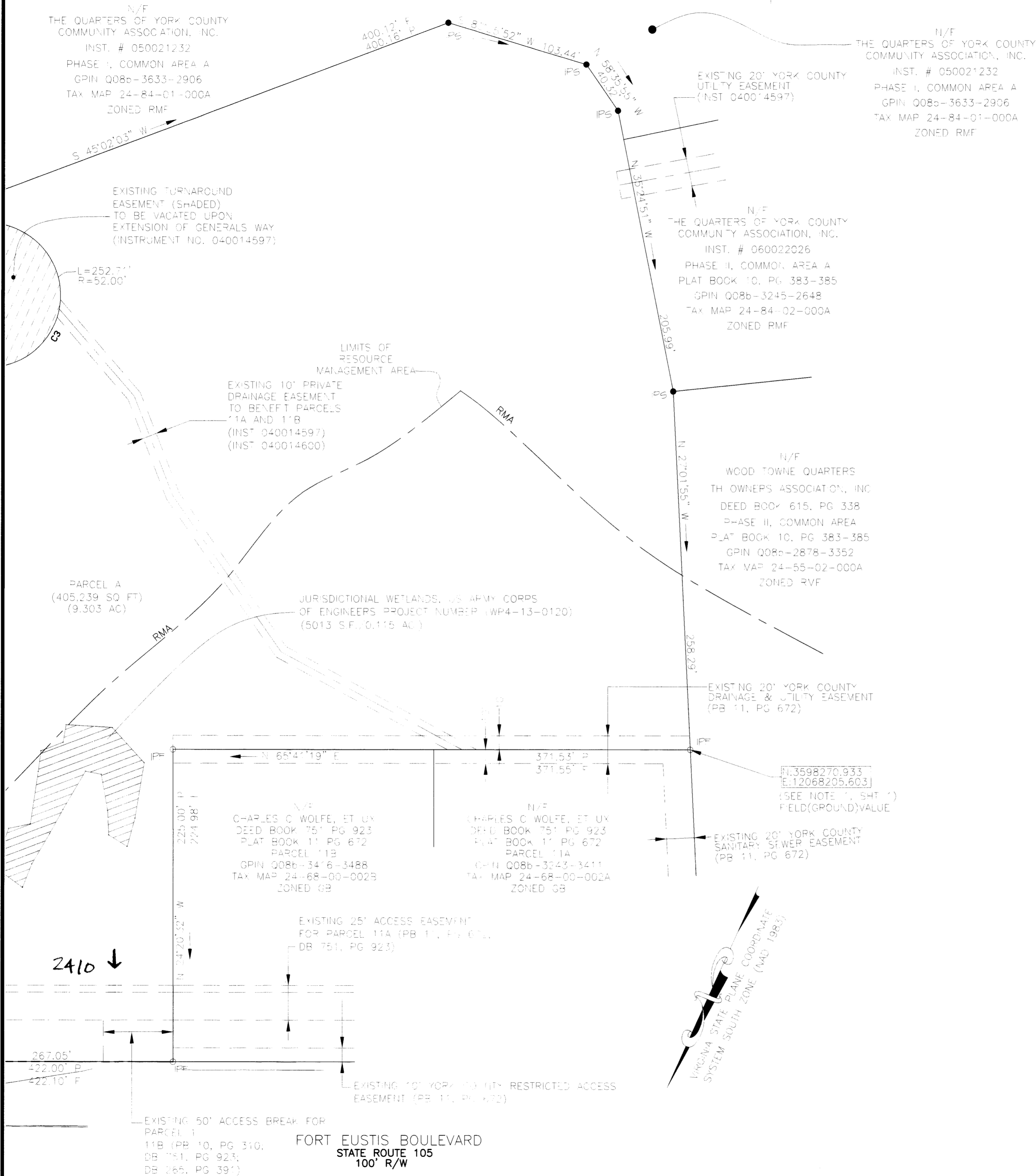
N/F  
THE QUARTERS OF YORK COUNTY  
COMMUNITY ASSOCIATION, INC.  
INST. # 050021232  
PHASE I, COMMON AREA A  
G PIN Q08b-3633-2906  
TAX MAP 24-84-01-000A  
ZONED RMF

SUBDIVISION OF THE PROPERTY  
OF  
TRIPLE FEATURE ASSOCIATES,  
A VIRGINIA LIMITED PARTNERSHIP  
NELSON DISTRICT - COUNTY OF YORK, VIRGINIA  
(SCALE: 1"=50') APRIL 9, 2013  
SHEET 3 OF 3  
**NDI ENGINEERING COMPANY**  
**BASGIER AND ASSOCIATES DIVISION**  
ENGINEERS-SURVEYORS-PLANNERS  
572 CENTRAL DRIVE, SUITE 103  
tele (757)431-2177, fax (757)431-2175  
VIRGINIA BEACH, VIRGINIA 23454



CURVE	RADIUS	ARC LENGTH	CHORD LENGTH	CHORD BEARING	DELTA ANGLE	TANGENT
C1	300.00'	10.07'	10.07'	S 89°04'57" E	1°55'25"	5.04'
C2	25.00'	19.25'	18.78'	N 69°48'43" E	44°06'38"	10.13'
C3	52.00'	252.71'	-	-	278°26'52"	-
C4	25.00'	24.70'	23.71'	N 62°05'24" W	56°35'57"	13.48'
C5	250.00'	234.09'	225.63'	S 62°46'32" W	53°39'01"	126.42'
C6	300.00'	156.36'	154.59'	S 50°52'52" W	29°51'43"	80.00'
C7	25.00'	39.26'	35.35'	S 20°49'25" W	89°58'38"	24.99'

MATCHLINE (SEE SHEET 2)



PIN LEGEND

- IPF IRON PIN FOUND
- IPS IRON PIN SET
- CPF CONCRETED STEEL PIN FOUND
- CPS CONCRETED STEEL PIN SET

- RMA RESOURCE MANAGEMENT AREA
- JURISDICTIONAL WETLANDS
- EXISTING TURNAROUND EASEMENT

APPROVED:  
YORK COUNTY BOARD OF SUPERVISORS  
BY: Al Maddalena  
PLAT APPROVING AGENT  
DATE: 6/12/13

STATE OF VIRGINIA  
COUNTY OF YORK  
IN THE CLERK'S OFFICE OF THE CIRCUIT COURT THE COUNTY OF YORK, THE 17th DAY OF June, 2013  
THIS MAP WAS PRESENTED AND ADMITTED TO RECORD AS THE LAW DIRECTS AS INSTRUMENT NUMBER 130011191  
TESTE: LYNN S. MENDIBUR 10:02 AM  
BY: Talvin S. Johnson, Jr. CLERK