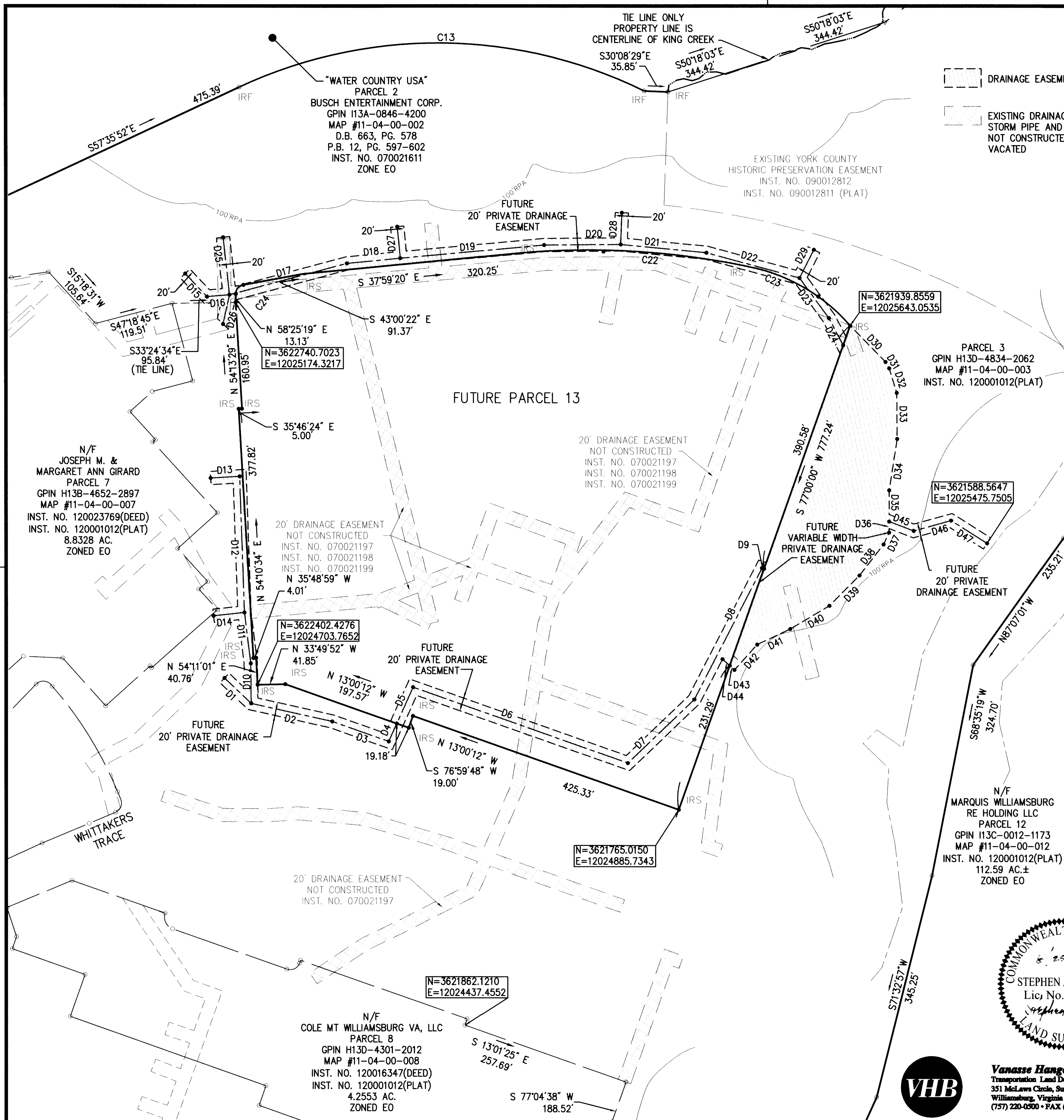
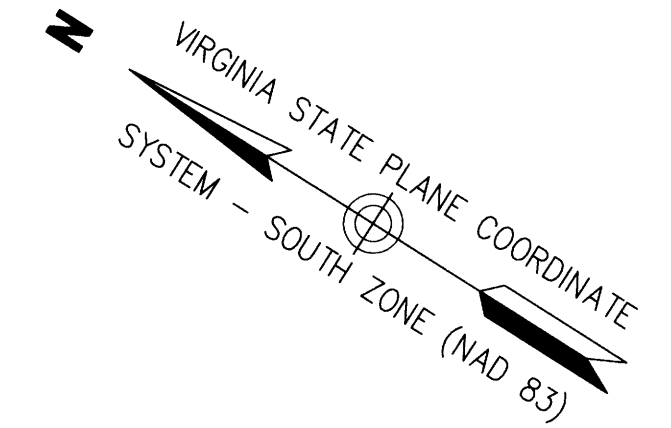


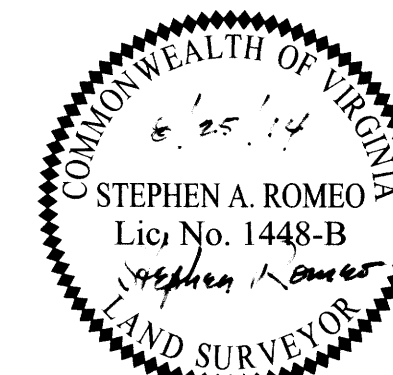
EXHIBIT "A"
**STORMWATER MANAGEMENT/
 BMP MAINTENANCE AGREEMENT**
**MARQUIS WILLIAMSBURG
 RE HOLDING LLC**

BRUTON DISTRICT, YORK COUNTY, VIRGINIA
 DATE: 8/25/14 SCALE: 1"=100'
 SHEET 1 OF 1

NOT A SUBDIVISION



LINE TABLE DRAINAGE EASEMENT			LINE TABLE DRAINAGE EASEMENT			LINE TABLE DRAINAGE EASEMENT		
LINE	BEARING	DISTANCE	LINE	BEARING	DISTANCE	LINE	BEARING	DISTANCE
D1	S11°05'34"W	55.60'	D17	S47°29'21"E	183.54'	D33	S56°59'41"W	69.74'
D2	S19°57'37"E	125.33'	D18	S37°59'20"E	81.00'	D34	S66°20'24"W	78.75'
D3	S13°00'00"E	90.47'	D19	S37°45'01"E	217.71'	D35	S57°42'06"W	47.41'
D4	N81°40'56"E	29.57'	D20	S32°56'33"E	115.66'	D36	S57°42'06"W	16.69'
D5	N81°40'56"E	60.19'	D21	S26°58'47"E	130.04'	D37	S82°26'59"W	19.81'
D6	S13°00'00"E	343.67'	D22	S17°16'33"E	145.55'	D38	N84°38'53"W	59.55'
D7	S76°17'02"E	139.18'	D23	S21°20'24"W	75.09'	D39	N77°44'06"W	64.44'
D8	N84°46'21"E	223.36'	D24	S30°02'55"W	46.56'	D40	N63°06'13"W	68.83'
D9	S14°12'25"E	3.15'	D25	N51°13'21"E	87.42'	D41	N57°53'15"W	54.98'
D10	N56°53'09"E	60.43'	D26	S69°59'28"W	45.40'	D42	N80°36'12"W	51.42'
D11	N50°28'09"E	77.71'	D27	N52°00'40"E	48.00'	D43	N09°23'48"E	9.73'
D12	N55°34'16"E	206.08'	D28	N59°34'25"E	48.01'	D44	N09°23'48"E	14.60'
D13	N35°52'00"W	43.96'	D29	N84°21'55"E	47.96'	D45	S11°31'47"E	39.61'
D14	N38°45'17"W	46.89'	D30	S13°25'43"W	76.76'	D46	S47°53'03"E	58.74'
D15	S14°27'23"W	47.80'	D31	S27°44'00"W	11.14'	D47	S00°03'43"E	64.20'
D16	S37°31'16"E	34.20'	D32	S40°30'38"W	38.74'			



Al Maddalena
 1/2/14

2nd September 14
 2:22 P

Christina H...



Vanasse Hangen Brustlin, Inc.
 Transportation Land Development Environmental Services
 351 McLaws Circle, Suite 3
 Williamsburg, Virginia 23185
 (757) 220-0500 • FAX (757) 220-8544