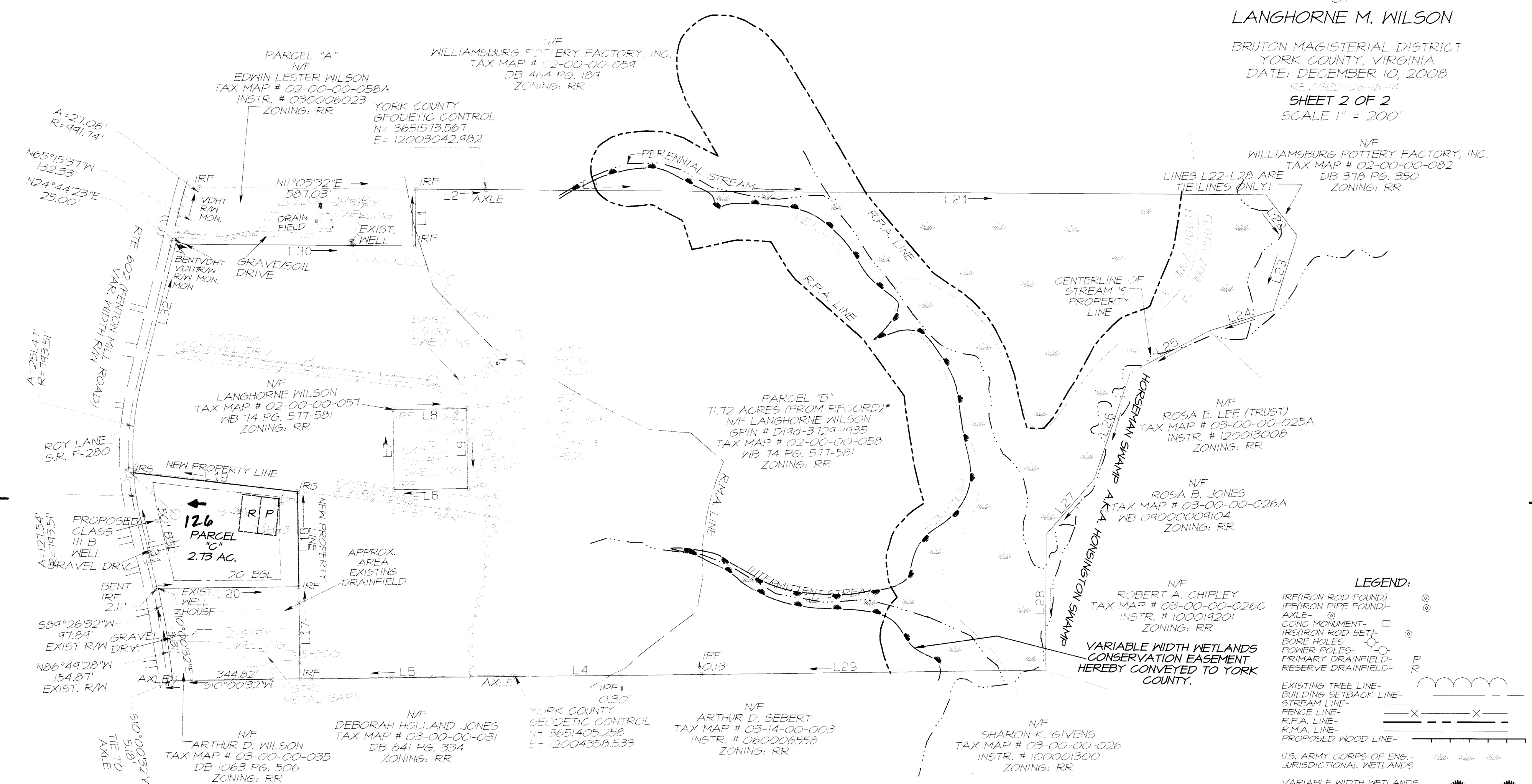


FAMILY SUBDIVISION

OF THE PROPERTY
OF
LANGHORNE M. WILSON

BRUTON MAGISTERIAL DISTRICT
YORK COUNTY, VIRGINIA
DATE: DECEMBER 10, 2008

REVISED 06-16-14
SHEET 2 OF 2
SCALE 1" = 200'



LEGEND:

- IRF (IRON ROD FOUND) - [Symbol]
- IPF (IRON PIPE FOUND) - [Symbol]
- AXLE - [Symbol]
- CONC MONUMENT - [Symbol]
- IRS (IRON ROD SET) - [Symbol]
- BORE HOLES - [Symbol]
- POWER POLES - [Symbol]
- PRIMARY DRAINFIELD - [Symbol]
- RESERVE DRAINFIELD - [Symbol]

EXISTING TREE LINE - [Symbol]

BUILDING SETBACK LINE - [Symbol]

STREAM LINE - [Symbol]

FENCE LINE - [Symbol]

R.P.A. LINE - [Symbol]

R.M.A. LINE - [Symbol]

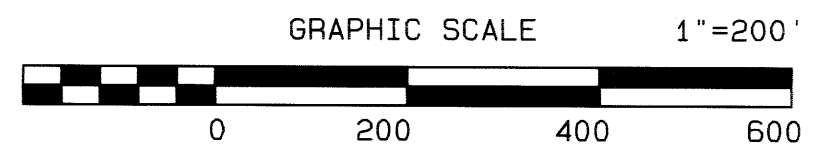
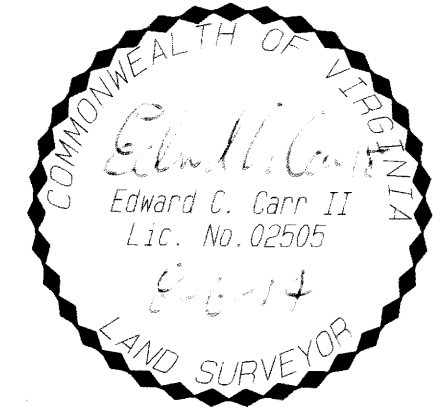
PROPOSED WOOD LINE - [Symbol]

U.S. ARMY CORPS OF ENG. - JURISDICTIONAL WETLANDS - [Symbol]

VARIABLE WIDTH WETLANDS CONSERVATION EASEMENT HEREBY CONVEYED TO YORK COUNTY. - [Symbol]

LINE	BEARING	DISTANCE
L1	N78°54'28"W	154.80
L2	N11°05'32"E	191.06
L3	S11°05'32"W	309.35
L4	S10°00'32"W	351.53
L5	S10°00'32"W	585.03
L6	N10°00'32"E	200.00
L7	S79°59'28"E	217.80
L8	N10°00'32"E	200.00
L9	S79°59'28"E	217.80

LINE	BEARING	DISTANCE
L17	N79°59'28"W	250.00
L18	N79°59'28"W	258.98
L19	S17°14'04"W	448.29
L20	N10°00'32"E	381.20
L21	N11°05'32"E	1679.38
L22	N63°30'22"E	139.00
L23	S61°40'58"E	214.20
L24	S06°49'28"E	182.20
L25	S17°29'28"E	242.20
L26	S60°29'28"E	304.90
L27	S38°29'28"E	198.70
L28	S78°59'28"E	368.90
L29	S10°00'32"W	1088.24
L30	N11°05'32"E	625.00
L31	S87°22'23"W	193.91
L32	N65°15'37"W	390.05



APPROVED:
YORK COUNTY BOARD OF SUPERVISORS
BY: Al Maddalena PLAT APPROVING AGENT
DATE: 9/15/14

STATE OF VIRGINIA
COUNTY OF YORK
IN THE CLERK'S OFFICE OF THE CIRCUIT COURT FOR THE
COUNTY OF YORK-POQUOSON THE 19th DAY OF Sept, 2014
THIS PLAT WAS PRESENTED AND ADMITTED TO RECORD
AS THE LAW DIRECTS AS INSTRUMENT NUMBER LC 140015267

TESTE: Kristen N Wilson
CLERK
BY: Wendie Helz DC
PROPERTY IS TAX PARCEL # 02-00-00-058
SPIN # D19d-3729-1935

2014 SEP 19 PM 12:51