

LEGEND

- PROPERTY LINE
- RIGHT-OF-WAY LINE
- EASEMENT
- RW MONUMENT SET
- CMF CONCRETE MONUMENT FOUND
- IR IRON ROD
- IRS IRON ROD SET
- IRF IRON ROD FOUND
- RPA RESOURCE PROTECTION AREA
- RMA RESOURCE MANAGEMENT AREA
- R/W RIGHT-OF-WAY
- PP POWER POLE
- N/F NOW/ FORMERLY

PLAT OF SUBDIVISION  
THE RESERVE AT WILLIAMSBURG  
SINGLE FAMILY RESIDENTIAL  
PHASE 1

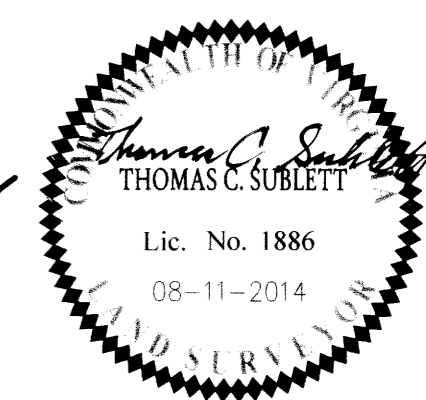
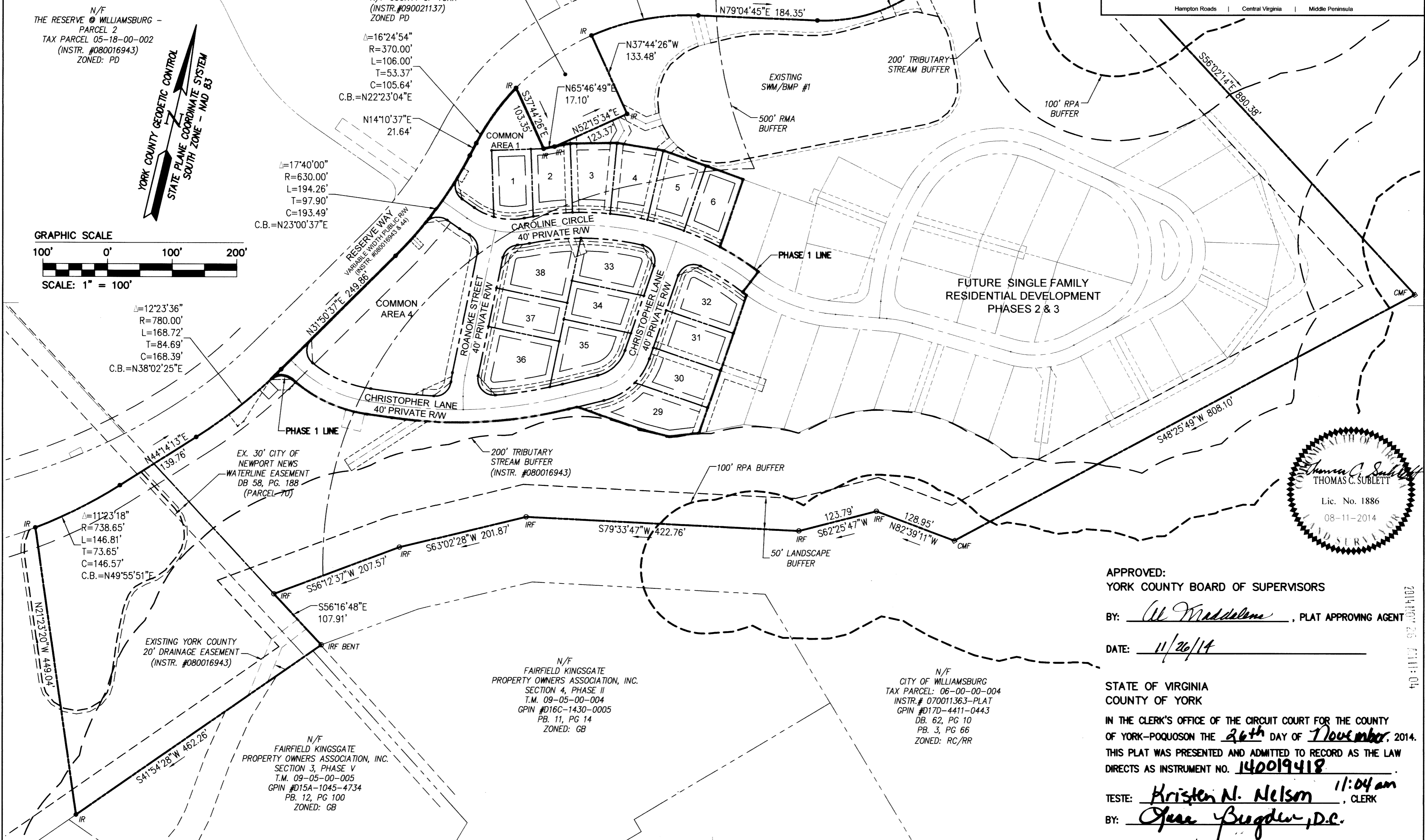
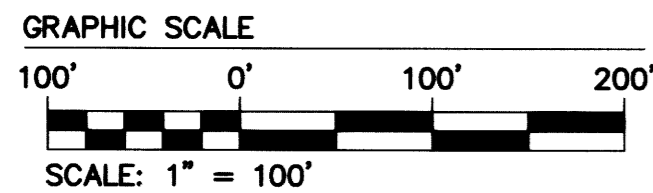
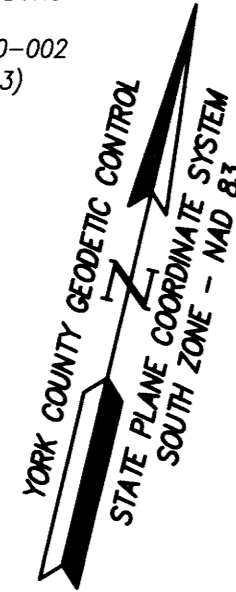
SHEET 2 OF 3

BRUTON DISTRICT COUNTY OF YORK VIRGINIA  
Date: 5-27-14 Scale: 1"=100' Proj. No.: 9128-10C Proj. Contacts: TCS/TRS



5248 Olde Towne Road, Suite 1  
Williamsburg, Virginia 23188  
Phone: (757) 253-0040  
Fax: (757) 220-8994  
www.aesva.com

Hampton Roads | Central Virginia | Middle Peninsula



APPROVED:  
YORK COUNTY BOARD OF SUPERVISORS  
BY: Al Maddalena, PLAT APPROVING AGENT

DATE: 11/26/14

STATE OF VIRGINIA  
COUNTY OF YORK  
IN THE CLERK'S OFFICE OF THE CIRCUIT COURT FOR THE COUNTY OF YORK-POQUOSON THE 26<sup>th</sup> DAY OF November, 2014.  
THIS PLAT WAS PRESENTED AND ADMITTED TO RECORD AS THE LAW DIRECTS AS INSTRUMENT NO. 140019418

TESTE: Kristen N. Nelson 11:04 am, CLERK  
BY: Jean Bugden, D.E.

AES CONSULTING ENGINEERS

2014 NOV 26 11:11:04