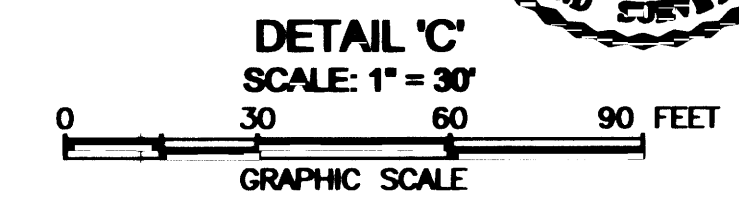


**SUBDIVISION PLAT  
OF  
CARTER ESTATES  
PROPERTY OF LULA CARTER ROAD, LLC**

CITY OF NEWPORT NEWS, VIRGINIA  
AND NELSON MAGISTERIAL DISTRICT  
COUNTY OF YORK, VIRGINIA  
SCALE: AS SHOWN      OCTOBER 17, 2014

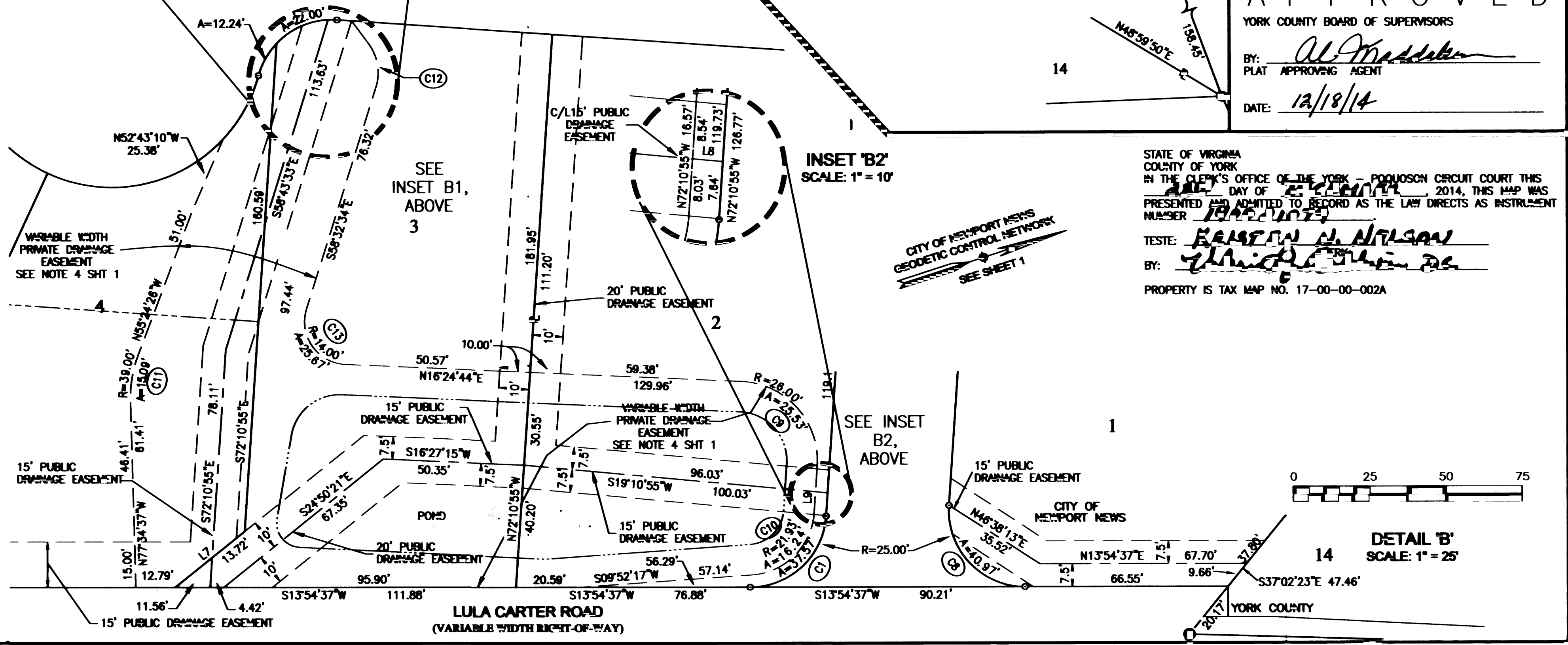
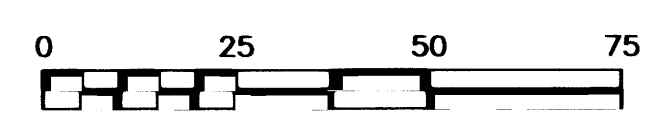
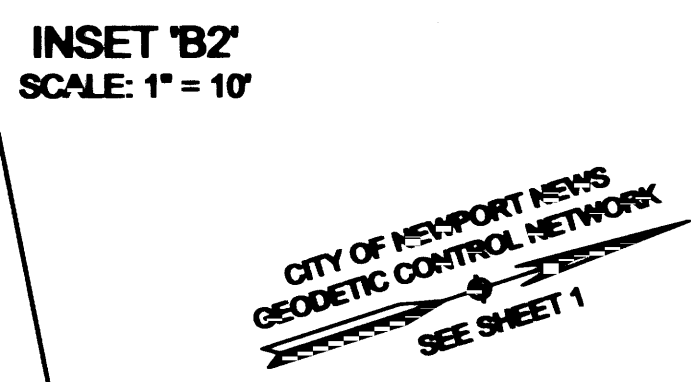
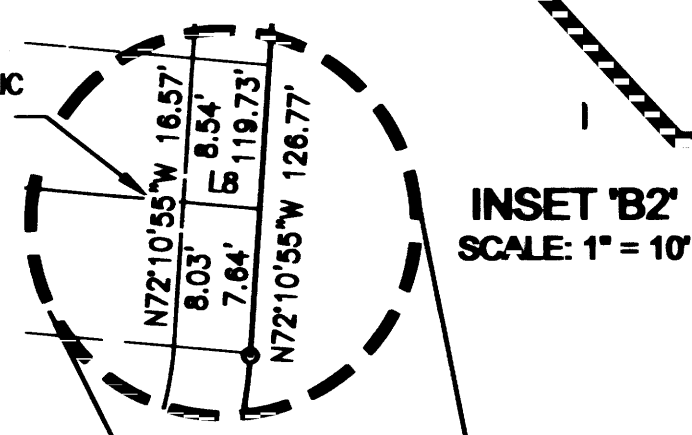
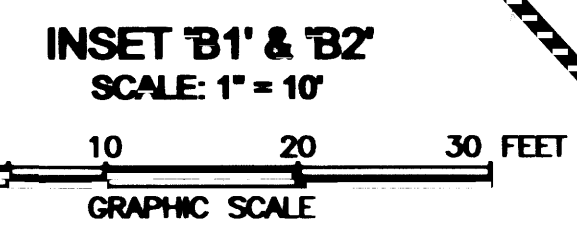
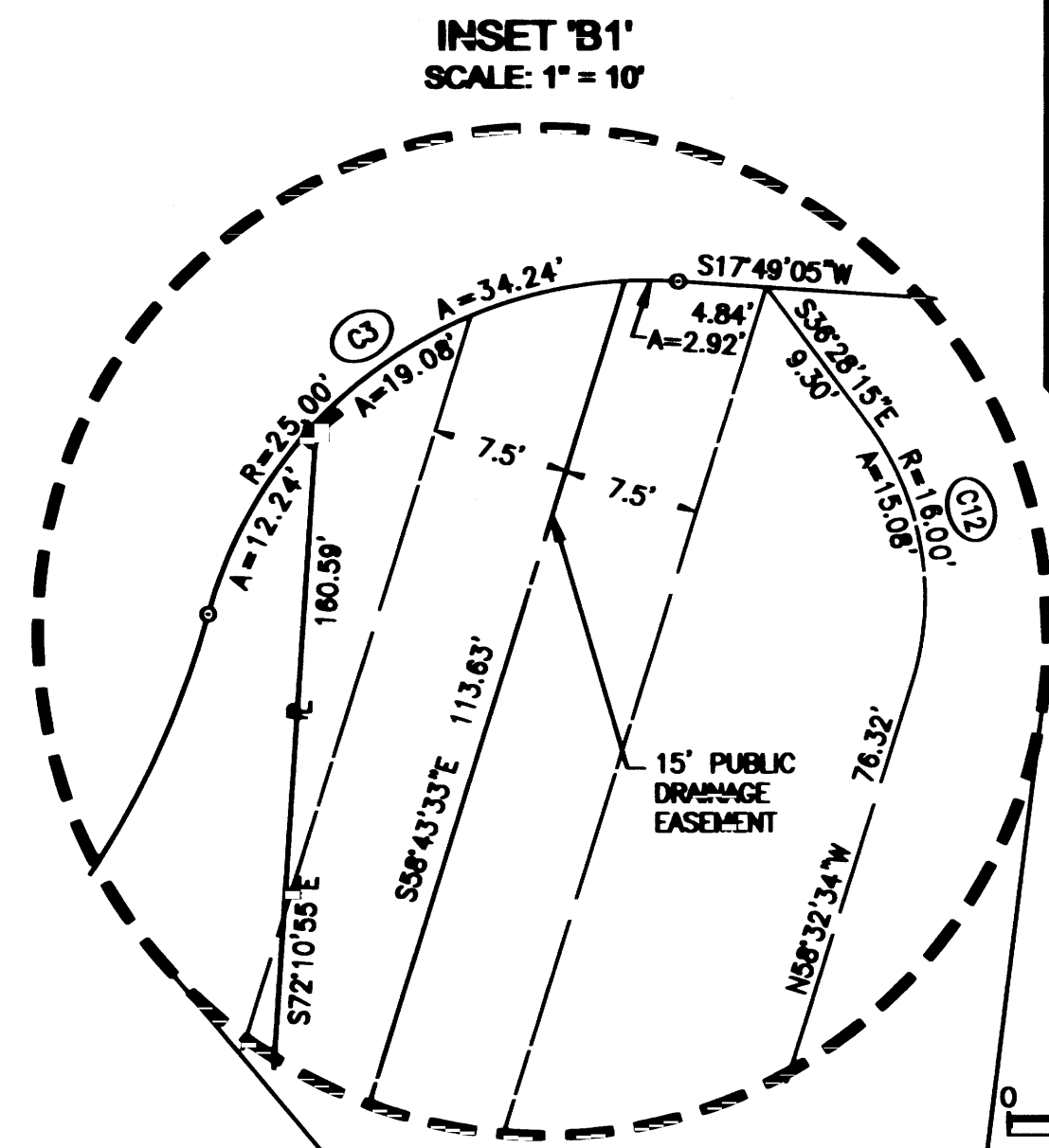


36 STRAWBERRY PLAINS ROAD, SUITE D  
WILLIAMSBURG, VIRGINIA 23183  
571-345-2633 - (757) 345-2677 (FAX)  
SHEET 4 OF 4



**APPROVED**  
YORK COUNTY BOARD OF SUPERVISORS  
BY: Al Maddalena  
PLAT APPROVING AGENT  
DATE: 12/18/14

STATE OF VIRGINIA  
COUNTY OF YORK  
IN THE CLERK'S OFFICE OF THE YORK - POQUOSON CIRCUIT COURT THIS  
DAY OF DECEMBER, 2014, THIS MAP WAS  
PRESENTED AND ADMITTED TO RECORD AS THE LAW DIRECTS AS INSTRUMENT  
NUMBER 17-00-00-002A  
TESTE: KAREN M. NELSON  
BY: Christina Williams  
PROPERTY IS TAX MAP NO. 17-00-00-002A



2014 DEC 23 AM 9:42