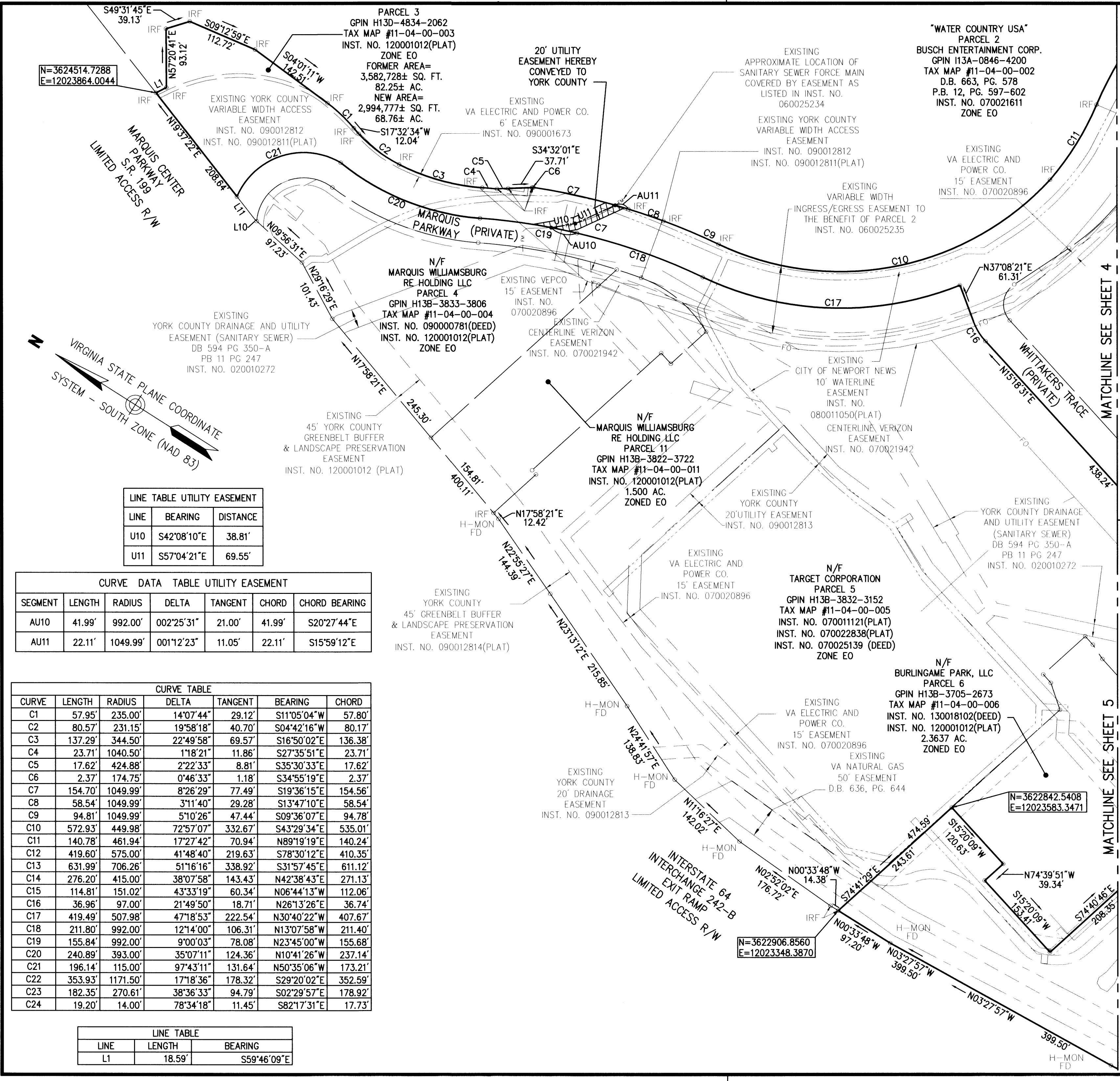


**SUBDIVISION OF PARCEL 3  
BEING THE PROPERTY OF  
MARQUIS WILLIAMSBURG  
RE HOLDING LLC**

BRUTON DISTRICT, YORK COUNTY, VIRGINIA  
DATE: 9/19/14 SCALE: 1"=100'  
SHEET 3 OF 8



N=3624514.7288  
E=12023864.0044

"WATER COUNTRY USA"  
PARCEL 2  
BUSCH ENTERTAINMENT CORP.  
GPIN 113A-0846-4200  
TAX MAP #11-04-00-002  
D.B. 663, PG. 578  
P.B. 12, PG. 597-602  
INST. NO. 070021611  
ZONE EO

PARCEL 3  
GPIN H13D-4834-2062  
TAX MAP #11-04-00-003  
INST. NO. 120001012(PLAT)  
ZONE EO  
FORMER AREA=  
3,582,728± SQ. FT.  
82.25± AC.  
NEW AREA=  
2,994,777± SQ. FT.  
68.76± AC.  
S17°32'34"W  
12.04'

N/F  
MARQUIS WILLIAMSBURG  
RE HOLDING LLC  
PARCEL 4  
GPIN H13B-3833-3806  
TAX MAP #11-04-00-004  
INST. NO. 090000781(DEED)  
INST. NO. 120001012(PLAT)  
ZONE EO

N/F  
MARQUIS WILLIAMSBURG  
RE HOLDING LLC  
PARCEL 11  
GPIN H13B-3822-3722  
TAX MAP #11-04-00-011  
INST. NO. 120001012(PLAT)  
1.500 AC.  
ZONED EO

N/F  
TARGET CORPORATION  
PARCEL 5  
GPIN H13B-3832-3152  
TAX MAP #11-04-00-005  
INST. NO. 070011121(PLAT)  
INST. NO. 070022838(PLAT)  
INST. NO. 070025139 (DEED)  
ZONE EO

N/F  
BURLINGAME PARK, LLC  
PARCEL 6  
GPIN H13B-3705-2673  
TAX MAP #11-04-00-006  
INST. NO. 130018102(DEED)  
INST. NO. 120001012(PLAT)  
2.3637 AC.  
ZONED EO

LINE TABLE UTILITY EASEMENT

LINE	BEARING	DISTANCE
U10	S42°08'10"E	38.81'
U11	S57°04'21"E	69.55'

CURVE DATA TABLE UTILITY EASEMENT

SEGMENT	LENGTH	RADIUS	DELTA	TANGENT	CHORD	CHORD BEARING
AU10	41.99'	992.00'	002°25'31"	21.00'	41.99'	S20°27'44"E
AU11	22.11'	1049.99'	001°12'23"	11.05'	22.11'	S15°59'12"E

CURVE TABLE

CURVE	LENGTH	RADIUS	DELTA	TANGENT	BEARING	CHORD
C1	57.95'	235.00'	14°07'44"	29.12'	S11°05'04"W	57.80'
C2	80.57'	231.15'	19°58'18"	40.70'	S04°42'16"W	80.17'
C3	137.29'	344.50'	22°49'58"	69.57'	S16°50'02"E	136.38'
C4	23.71'	1040.50'	1°18'21"	11.86'	S27°35'51"E	23.71'
C5	17.62'	424.88'	2°22'33"	8.81'	S35°30'33"E	17.62'
C6	2.37'	174.75'	0°46'33"	1.18'	S34°55'19"E	2.37'
C7	154.70'	1049.99'	8°26'29"	77.49'	S19°36'15"E	154.56'
C8	58.54'	1049.99'	3°11'40"	29.28'	S13°47'10"E	58.54'
C9	94.81'	1049.99'	5°10'26"	47.44'	S09°36'07"E	94.78'
C10	572.93'	449.98'	72°57'07"	332.67'	S43°29'34"E	535.01'
C11	140.78'	461.94'	17°27'42"	70.94'	N89°19'19"E	140.24'
C12	419.60'	575.00'	41°48'40"	219.63'	S78°30'12"E	410.35'
C13	631.99'	706.26'	51°16'16"	338.92'	S31°57'45"E	611.12'
C14	276.20'	415.00'	38°07'58"	143.43'	N42°38'43"E	271.13'
C15	114.81'	151.02'	43°33'19"	60.34'	N06°44'13"W	112.06'
C16	36.96'	97.00'	21°49'50"	18.71'	N26°13'26"E	36.74'
C17	419.49'	507.98'	47°18'53"	222.54'	N30°40'22"W	407.67'
C18	211.80'	992.00'	12°14'00"	106.31'	N13°07'58"W	211.40'
C19	155.84'	992.00'	9°00'03"	78.08'	N23°45'00"W	155.68'
C20	240.89'	393.00'	35°07'11"	124.36'	N10°41'26"W	237.14'
C21	196.14'	115.00'	97°43'11"	131.64'	N50°35'06"W	173.21'
C22	353.93'	1171.50'	17°18'36"	178.32'	S29°20'02"E	352.59'
C23	182.35'	270.61'	38°36'33"	94.79'	S02°29'57"E	178.92'
C24	19.20'	14.00'	78°34'18"	11.45'	S82°17'31"E	17.73'

LINE TABLE

LINE	LENGTH	BEARING
L1	18.59'	S59°46'09"E



**Vanasse Hangen Brustlin, Inc.**  
Transportation Land Development Environmental Services  
351 McLaws Circle, Suite 3  
Williamsburg, Virginia 23185  
(757) 220-0500 • FAX (757) 220-8544

APPROVED:  
YORK COUNTY BOARD OF SUPERVISORS  
BY: *[Signature]*  
PLAT APPROVING AGENT  
DATE: 9/15/14

STATE OF VIRGINIA, COUNTY OF YORK  
IN THE CLERK'S OFFICE OF THE CIRCUIT COURT FOR THE  
COUNTY OF YORK-POQUOSON THE 15<sup>th</sup> DAY OF  
Feb 2014 THIS MAP WAS PRESENTED AND  
ADMITTED TO RECORD AS THE LAW DIRECTS AS  
INSTRUMENT NO. 150002070  
TESTE: *Kristen N. Nelson, Clerk*  
CLERK  
BY: *[Signature]*

MATCHLINE SEE SHEET 4  
MATCHLINE SEE SHEET 5