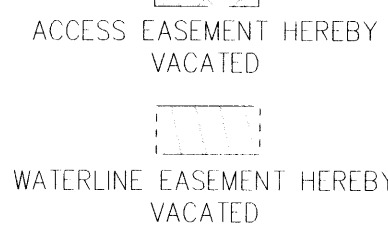
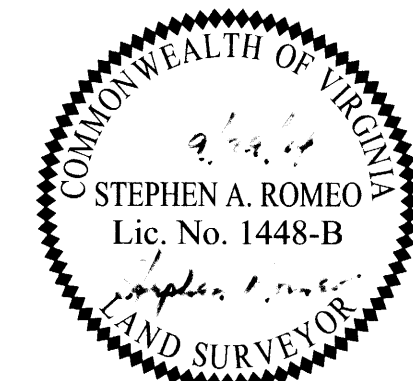
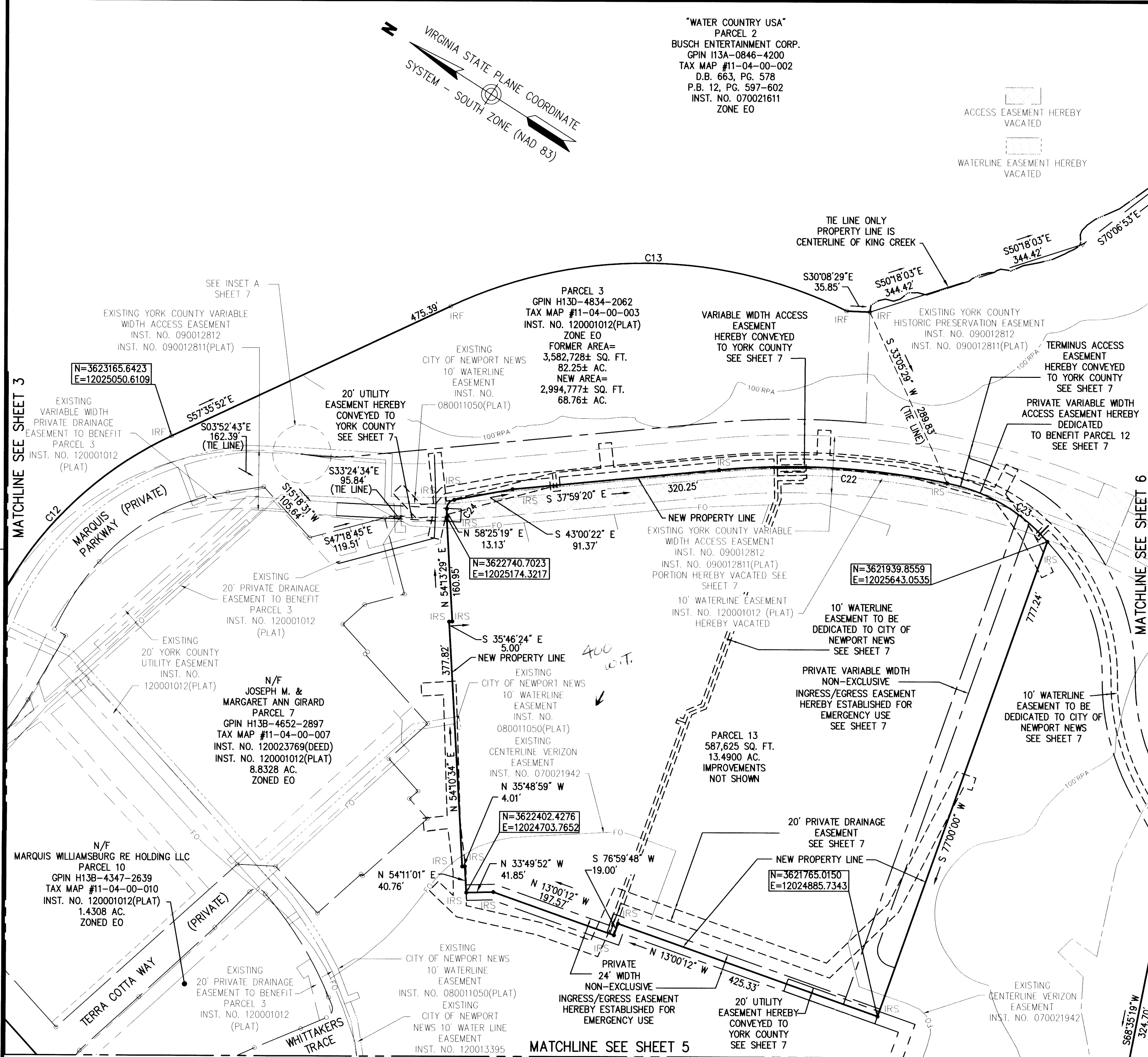


"WATER COUNTRY USA"  
 PARCEL 2  
 BUSCH ENTERTAINMENT CORP.  
 GPIN 113A-0846-4200  
 TAX MAP #11-04-00-002  
 D.B. 663, PG. 578  
 P.B. 12, PG. 597-602  
 INST. NO. 070021611  
 ZONE EO



**SUBDIVISION OF PARCEL 3  
 BEING THE PROPERTY OF  
 MARQUIS WILLIAMSBURG  
 RE HOLDING LLC**

BRUTON DISTRICT, YORK COUNTY, VIRGINIA  
 DATE: 9/19/14 SCALE: 1"=100'  
 SHEET 4 OF 8



**VHB**  
**Vanasse Hangen Brustlin, Inc.**  
 Transportation Land Development Environmental Services  
 351 McLaws Circle, Suite 3  
 Williamsburg, Virginia 23185  
 (757) 220-0500 • FAX (757) 220-8544

APPROVED:  
 YORK COUNTY BOARD OF SUPERVISORS  
 BY: *L. Waddell*  
 PLAT APPROVING AGENT  
 DATE: *9/15*

STATE OF VIRGINIA, COUNTY OF YORK  
 IN THE CLERK'S OFFICE OF THE CIRCUIT COURT FOR THE  
 COUNTY OF YORK-POQUOSON THE *10<sup>th</sup>* DAY OF  
*Feb* 20*15* THIS MAP WAS PRESENTED AND  
 ADMITTED TO RECORD AS THE LAW DIRECTS AS  
 INSTRUMENT NO. *150002070*  
 TESTE: *Kristen N. Nelson, Clerk*  
 BY: *[Signature]*

MATCHLINE SEE SHEET 3

MATCHLINE SEE SHEET 6

MATCHLINE SEE SHEET 5